

WAYNE STATE UNIVERSITY

Enrollment Market Share Report

Fall 2010 to Fall 2015



Office of Institutional Research
4070 Faculty Administration Building
656 W. Kirby Avenue
Detroit, MI 48202
(313) 577-2001
<http://budget.wayne.edu>

Table of Contents

Introduction	ii
Background and Perspective.....	1
Summary of Wayne State University	11
Summary of Southeastern Michigan Counties	19
Livingston County.....	25
Macomb County.....	30
Monroe County.....	36
Oakland County.....	42
St. Clair County.....	48
Washtenaw County.....	54
Wayne County.....	60
MPU Enrollment Comparison	66
Appendix A - Data Tables	70
Appendix B - SEMCOG 2040 School Age Population Forecast.....	92

Introduction

The purpose of this report is to present an overview that shows how Wayne State University (WSU) compares in attracting students from the seven surrounding counties of Southeastern (SE) Michigan. The designation of the seven counties complies with the usage of the Southeastern Michigan Council of Governments (SEMCOG). Of the seven SE Michigan counties, Wayne County is the principal source of WSU enrollments while two others, Oakland and Macomb, are also major enrollment sources. The remaining four counties, given their proximity to WSU and their growth in student population, are also relevant. The data was collected by Grand Valley State University as reported by the individual Michigan public universities.

For each of the seven counties, there are a series of charts that show the top Michigan public universities (MPUs) market share compared to WSU. Additionally, a separate chart compares the split of each county's high school graduates between those attending MPUs and those attending that county's community college. Note that the MPU markets presented here do not reflect the percentage of students from a county attending private schools or any schools outside Michigan's borders.

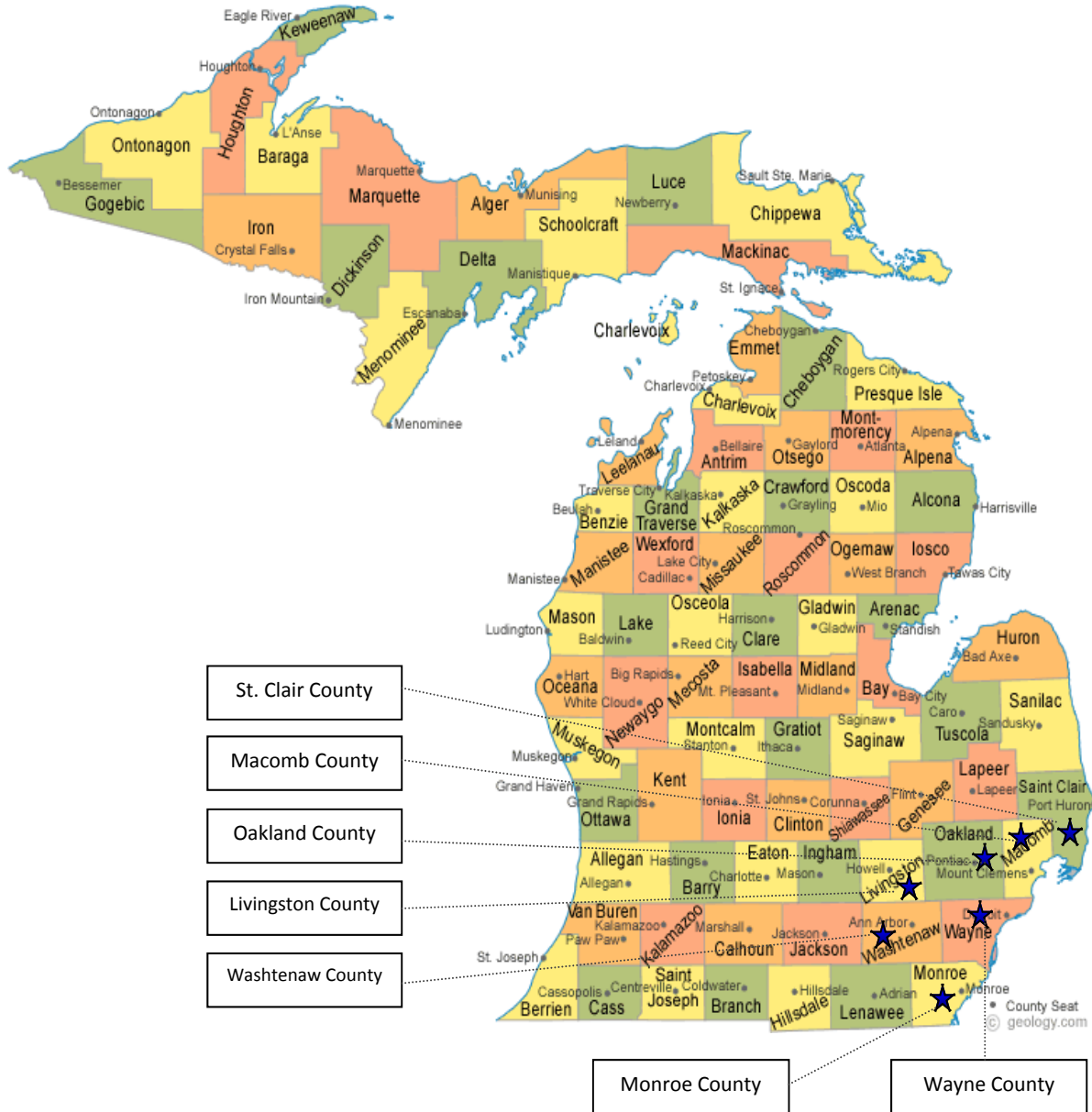
This report does not present a complete picture of enrollment, as no information is included about students from outside Michigan and limited information is included covering students from outside the seven SE counties. This report shows which of the MPUs is most successful in attracting students from each of these important counties, how that has changed during the past decade, and how WSU compares to other MPUs.

The WSU historical enrollment data (Fall 2010 through Fall 2011) has been adjusted to reflect the reduction of students who were previously counted as enrolled but dropped during the registration period.

The Office of Institutional Research
4070 Faculty/Administration Building
Telephone: (313) 577-2001

<http://budget.wayne.edu>

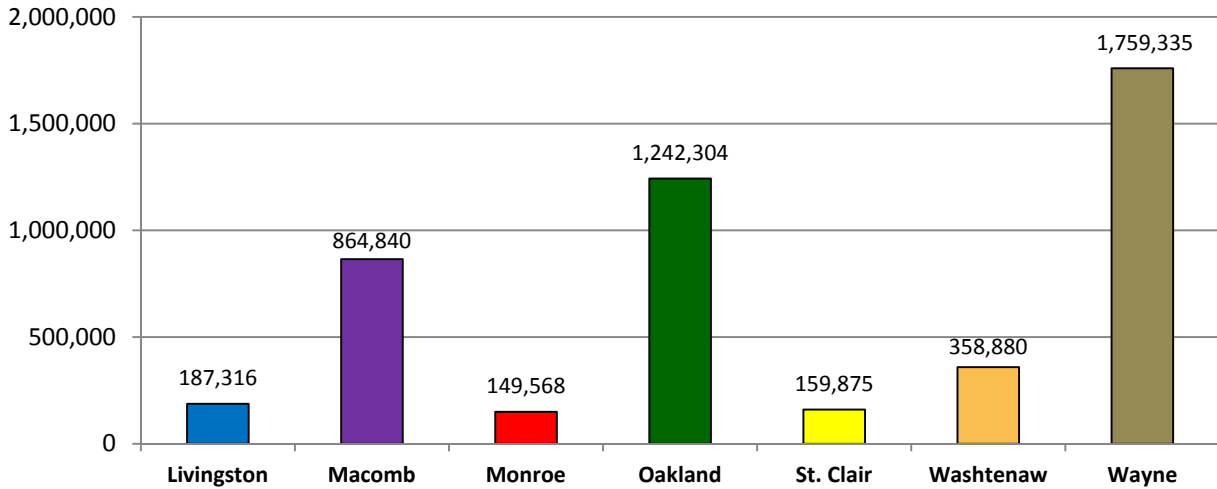
Southeastern Michigan Counties Included in Market Share Report



This page left blank intentionally

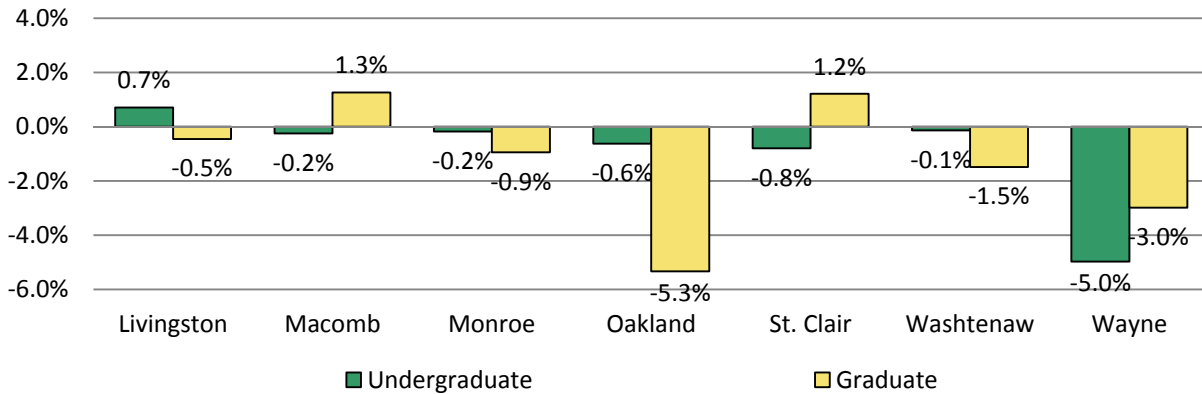
Population and Enrollment

2015 U.S. Census Bureau Estimated Population by County

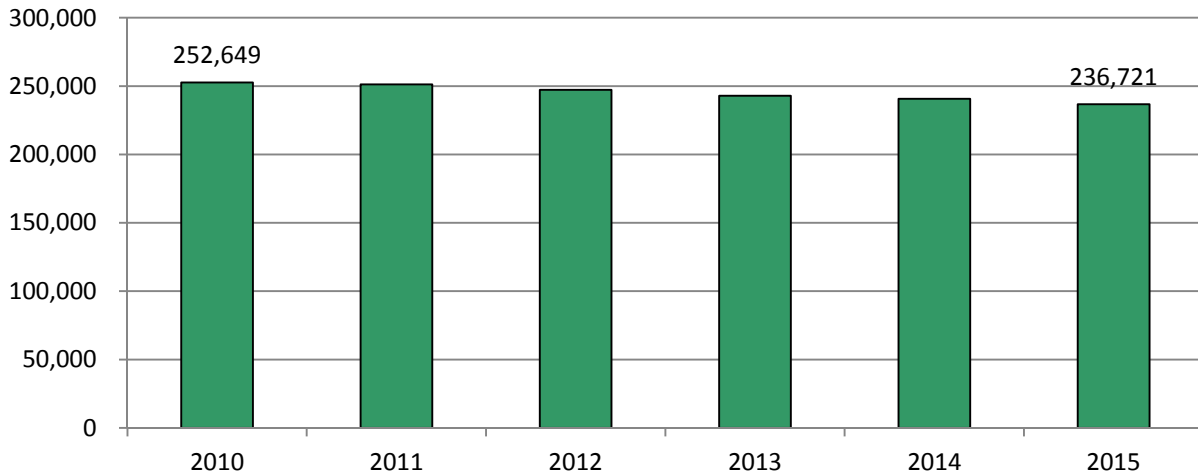


Source: US Census Bureau

**WSU Percentage Point Change in Enrollment Market Share by County
Fall 2010 to Fall 2015**

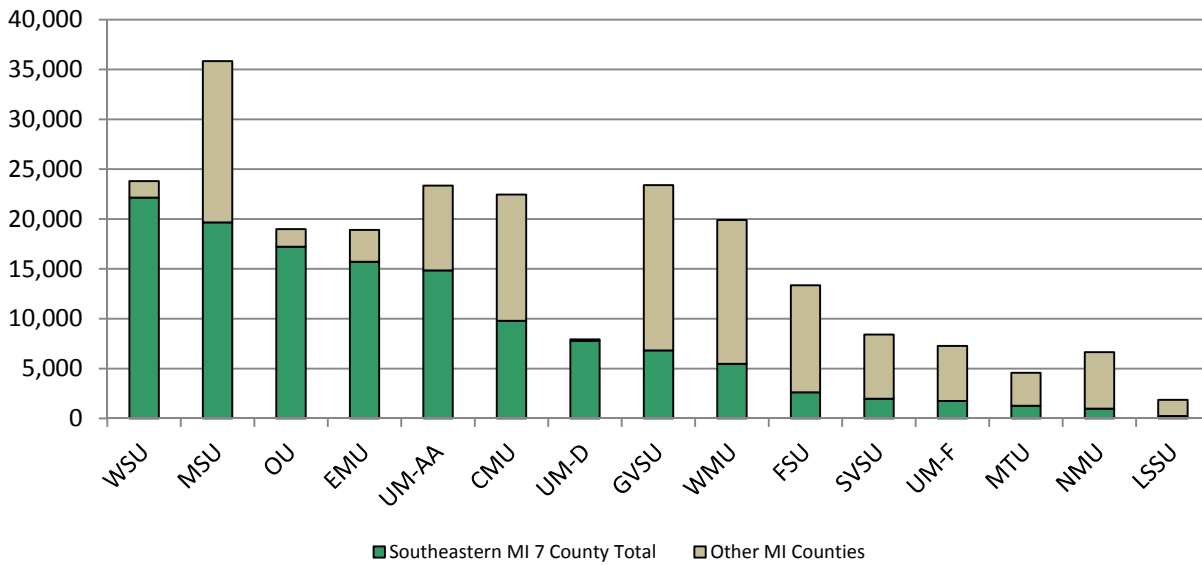


Total MPU Overall Resident Enrollment



- In 2015, total MPU enrollment decreased by 15,928 (-6.3 % change) compared to 2010.

MPU Resident Headcount Enrollment as of Fall 2015



- While Michigan State has the highest overall enrollment, Wayne State has the highest enrollment from the seven surrounding counties of Southeastern Michigan.
- Michigan State University has the second highest Southeastern Michigan enrollment, while Lake Superior State has the lowest.

SE MPU FTIAC Resident Enrollment
Fall 2010 vs Fall 2015

2010	Livingston	Macomb	Monroe	Oakland	St. Clair	Washtenaw	Wayne
CMU	141	406	32	741	78	101	439
EMU	57	72	39	178	1	307	761
FSU	31	94	7	144	31	31	151
GVSU	94	201	25	446	29	80	286
LSSU	6	13	2	24	8	1	11
MSU	181	496	41	1,464	58	223	800
MTU	25	44	7	83	10	18	58
NMU	10	22	10	93	14	8	61
OU	18	722	12	944	33	10	259
SVSU	24	113	6	158	38	17	213
UM-AA	56	200	38	1,257	34	408	595
UM-D	3	23	7	131	0	27	700
UM-F	23	14	0	61	12	2	28
WMU	61	219	15	459	34	99	412
WSU	11	418	12	430	23	24	1,474
2015	Livingston	Macomb	Monroe	Oakland	St. Clair	Washtenaw	Wayne
CMU	104	314	24	572	56	72	376
EMU	126	108	53	189	3	389	943
FSU	15	72	7	106	33	24	175
GVSU	145	234	20	639	42	86	324
LSSU	1	6	3	19	5	2	18
MSU	174	506	33	1,482	65	193	993
MTU	39	38	7	92	16	31	64
NMU	26	33	5	71	8	12	58
OU	51	833	15	985	86	27	214
SVSU	28	101	12	102	49	12	98
UM-AA	58	164	24	1,136	22	391	548
UM-D	6	32	8	121	3	33	719
UM-F	26	9	1	30	5	3	66
WMU	77	171	12	348	35	92	318
WSU	17	468	6	532	19	29	1,220
Totals	Livingston	Macomb	Monroe	Oakland	St. Clair	Washtenaw	Wayne
2010 Total	741	3,057	253	6,613	403	1,356	6,248
2015 Total	893	3,089	230	6,424	447	1,396	6,134
% Change	20.5%	1.0%	-9.1%	-2.9%	10.9%	2.9%	-1.8%

SE MPU Undergraduate (Including FTIAC) Resident Enrollment
 Fall 2010 vs Fall 2015

2010	Livingston	Macomb	Monroe	Oakland	St. Clair	Washtenaw	Wayne
CMU	591	1,963	180	3,542	436	295	2,156
EMU	1,008	473	572	1,884	72	4,078	6,258
FSU	171	446	40	580	232	138	569
GVSU	468	924	85	1,953	213	323	1,254
LSSU	22	71	9	77	28	8	56
MSU	1,042	2,341	261	7,145	353	1,054	4,087
MTU	91	205	38	348	52	79	261
NMU	72	112	28	347	76	50	235
OU	106	5,175	36	7,176	299	44	1,096
SVSU	81	396	42	471	222	58	520
UM-AA	330	988	140	5,071	153	1,996	2,724
UM-D	25	267	54	1,063	15	192	5,371
UM-F	170	87	4	552	159	32	112
WMU	280	985	110	2,033	163	463	1,508
WSU	70	3,563	77	3,940	217	194	10,352
2015	Livingston	Macomb	Monroe	Oakland	St. Clair	Washtenaw	Wayne
CMU	561	1,729	168	3,069	400	324	2,116
EMU	968	490	489	1,535	11	3,600	6,080
FSU	187	536	35	570	237	122	670
GVSU	587	1,016	103	2,519	266	401	1,494
LSSU	23	36	10	78	23	16	58
MSU	1,045	2,418	192	7,455	288	1,058	4,439
MTU	122	198	30	437	60	101	243
NMU	95	152	23	364	41	56	220
OU	183	5,661	41	7,351	462	71	979
SVSU	87	410	54	475	192	56	513
UM-AA	307	834	145	4,985	118	2,149	2,697
UM-D	50	230	50	953	10	185	5,261
UM-F	320	137	9	427	139	59	275
WMU	365	920	79	1,669	163	449	1,513
WSU	113	3,589	66	3,646	189	178	8,089
Totals	Livingston	Macomb	Monroe	Oakland	St. Clair	Washtenaw	Wayne
2010 Totals	4,527	17,996	1,676	36,182	2,690	9,004	36,559
2015 Totals	5,013	18,356	1,494	35,533	2,599	8,825	34,647
% Change	10.7%	2.0%	-10.9%	-1.8%	-3.4%	-2.0%	-5.2%

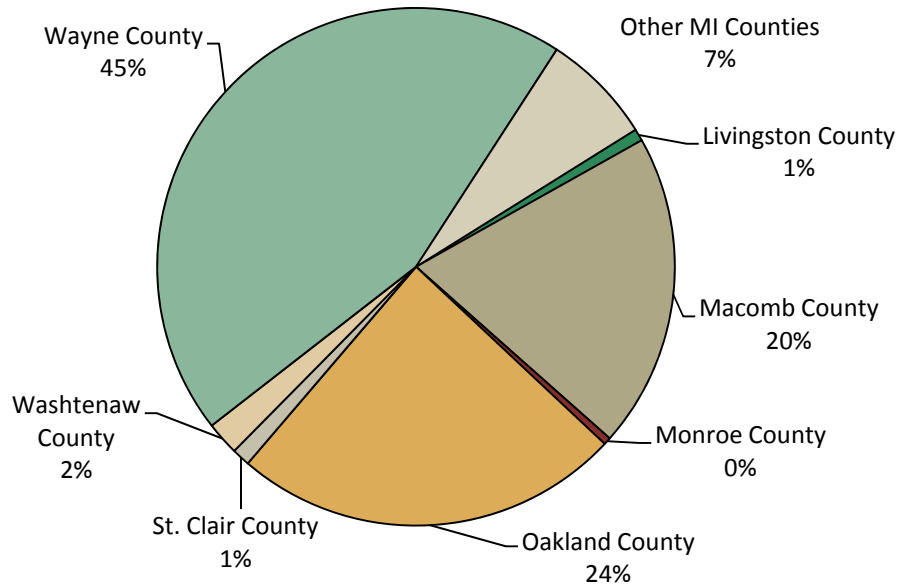
SE MPU Graduate Resident Enrollment
Fall 2010 vs Fall 2015

2010	Livingston	Macomb	Monroe	Oakland	St. Clair	Washtenaw	Wayne
CMU	33	266	14	490	65	39	583
EMU	219	99	136	477	21	1,177	1,226
FSU	3	23	6	54	15	9	35
GVSU	26	47	5	97	15	32	93
LSSU	0	6	1	9	0	3	46
MSU	148	326	46	1,040	43	246	597
MTU	5	25	6	40	8	10	25
NMU	1	6	2	8	0	2	6
OU	22	865	6	1,603	49	27	286
SVSU	4	329	1	93	80	3	29
UM-AA	95	208	29	1,080	28	1,083	653
UM-D	15	79	9	277	4	65	777
UM-F	39	30	0	134	26	18	27
WMU	21	39	9	83	7	20	71
WSU	73	1,138	52	2,727	100	361	3,156
2015							
2015	Livingston	Macomb	Monroe	Oakland	St. Clair	Washtenaw	Wayne
CMU	45	308	25	471	50	64	466
EMU	144	96	103	418	5	878	898
FSU	10	53	5	81	15	17	80
GVSU	29	77	2	152	10	42	127
LSSU	0	0	0	0	0	0	0
MSU	178	374	38	1,169	58	248	707
MTU	3	9	4	33	4	15	20
NMU	2	8	4	12	3	1	7
OU	37	687	7	1,385	57	53	246
SVSU	2	99	1	45	26	4	20
UM-AA	100	246	40	1,093	25	1,314	790
UM-D	12	72	16	299	0	59	592
UM-F	39	52	2	162	15	54	58
WMU	17	67	4	105	8	31	87
WSU	68	1,102	45	2,097	82	315	2,564
Totals							
Totals	Livingston	Macomb	Monroe	Oakland	St. Clair	Washtenaw	Wayne
2010 Totals	704	3,486	322	8,212	461	3,095	7,610
2015 Totals	686	3,250	296	7,522	358	3,095	6,662
% Change	-2.6%	-6.8%	-8.1%	-8.4%	-22.3%	0.0%	-12.5%

Total SE MPU Resident Enrollment
Fall 2010 vs Fall 2015

2010	Livingston	Macomb	Monroe	Oakland	St. Clair	Washtenaw	Wayne
CMU	624	2,229	194	4,032	501	334	2,739
EMU	1,227	572	708	2,361	93	5,255	7,484
FSU	174	469	46	634	247	147	604
GVSU	494	971	90	2,050	228	355	1,347
LSSU	22	77	10	86	28	11	102
MSU	1,190	2,667	307	8,185	396	1,300	4,684
MTU	96	230	44	388	60	89	286
NMU	73	118	30	355	76	52	241
OU	128	6,040	42	8,779	348	71	1,382
SVSU	85	725	43	564	302	61	549
UM-AA	425	1,196	169	6,151	181	3,079	3,377
UM-D	40	346	63	1,340	19	257	6,148
UM-F	209	117	4	686	185	50	139
WMU	301	1,024	119	2,116	170	483	1,579
WSU	143	4,701	129	6,667	317	555	13,508
2015							
2015	Livingston	Macomb	Monroe	Oakland	St. Clair	Washtenaw	Wayne
CMU	606	2,037	193	3,540	450	388	2,582
EMU	1,112	586	592	1,953	16	4,478	6,978
FSU	197	589	40	651	252	139	750
GVSU	616	1,093	105	2,671	276	443	1,621
LSSU	23	36	10	78	23	16	58
MSU	1,223	2,792	230	8,624	346	1,306	5,146
MTU	125	207	34	470	64	116	263
NMU	97	160	27	376	44	57	227
OU	220	6,348	48	8,736	519	124	1,225
SVSU	89	509	55	520	218	60	533
UM-AA	407	1,080	185	6,078	143	3,463	3,487
UM-D	62	302	66	1,252	10	244	5,853
UM-F	359	189	11	589	154	113	333
WMU	382	987	83	1,774	171	480	1,600
WSU	181	4,691	111	5,743	271	493	10,653
Totals							
Totals	Livingston	Macomb	Monroe	Oakland	St. Clair	Washtenaw	Wayne
2010 Totals	5,231	21,482	1,998	44,394	3,151	12,099	44,169
2015 Totals	5,699	21,606	1,790	43,055	2,957	11,920	41,309
% Change	8.9%	0.6%	-10.4%	-3.0%	-6.2%	-1.5%	-6.5%

**Wayne State University Total Enrollment by County
Michigan Residents - Fall 2015**

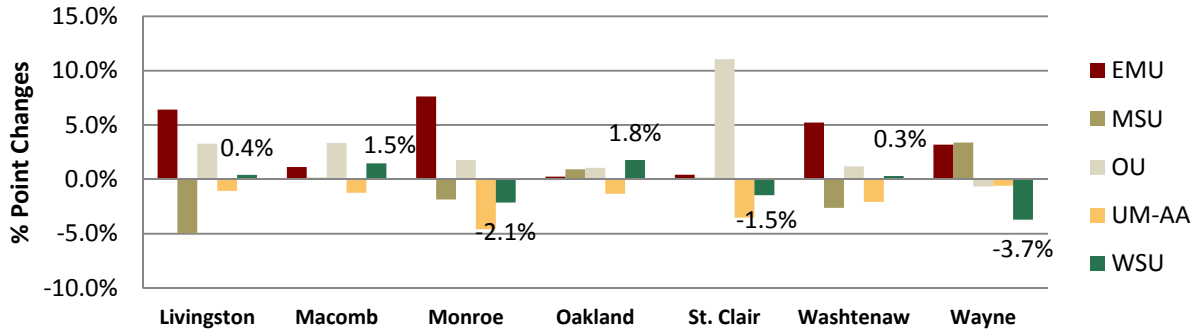


County	WSU Students
Livingston County	181
Macomb County	4,691
Monroe County	111
Oakland County	5,743
St. Clair County	271
Washtenaw County	493
Wayne County	10,653
<i>Southeastern Michigan Total</i>	22,143
Other MI Counties	1,662
Grand Total WSU - Michigan Residents	23,805

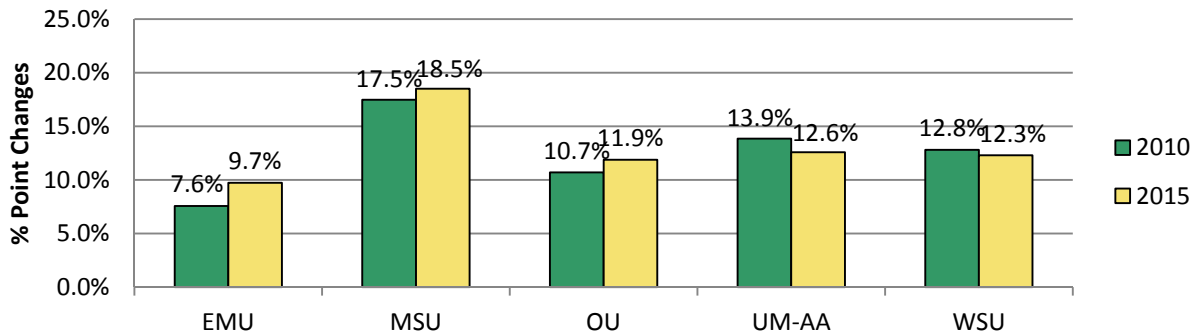
Change in Market Share

The following charts show the top four Southeastern (SE) MPUs in market share gains for FTIACs (First Time in Any College), Undergraduates (including FTIACs) and Graduate students. The market share changes are compared to Wayne State University in the seven SE Michigan counties from Fall 2010 to Fall 2015.

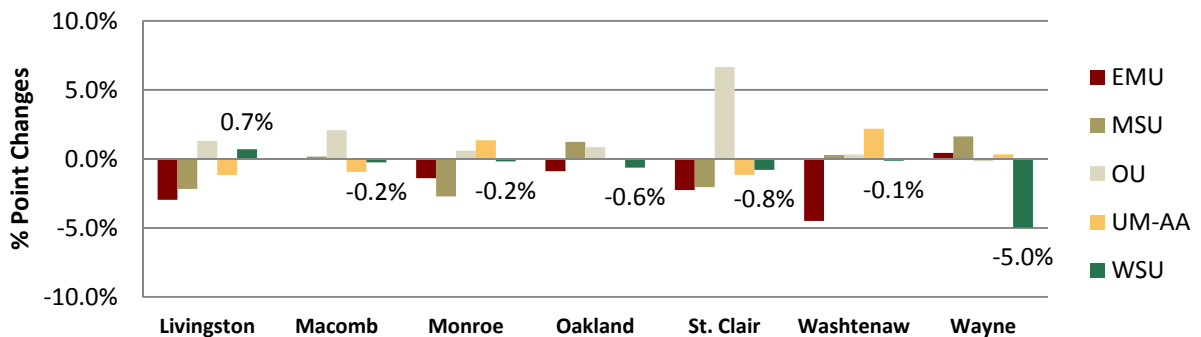
**SE MPU FTIAC Enrollment
Market Share Change by County
Fall 2010 - Fall 2015**



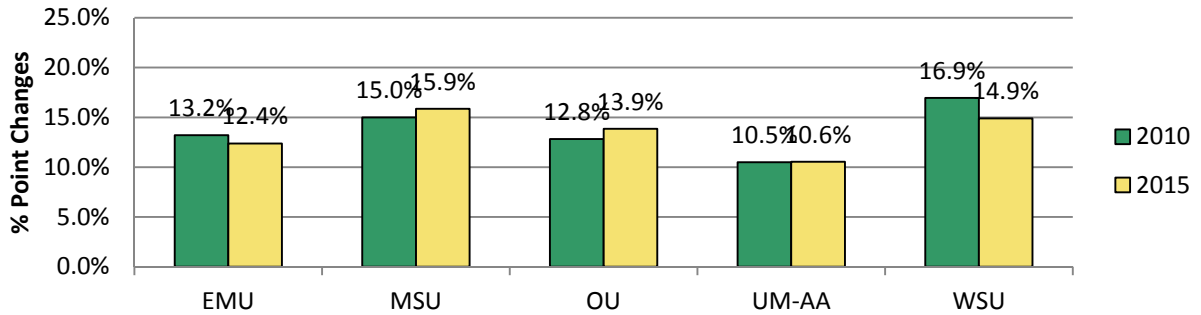
**SE MPU FTIAC Enrollment
Market Share Change by University
Fall 2010 vs. Fall 2015**



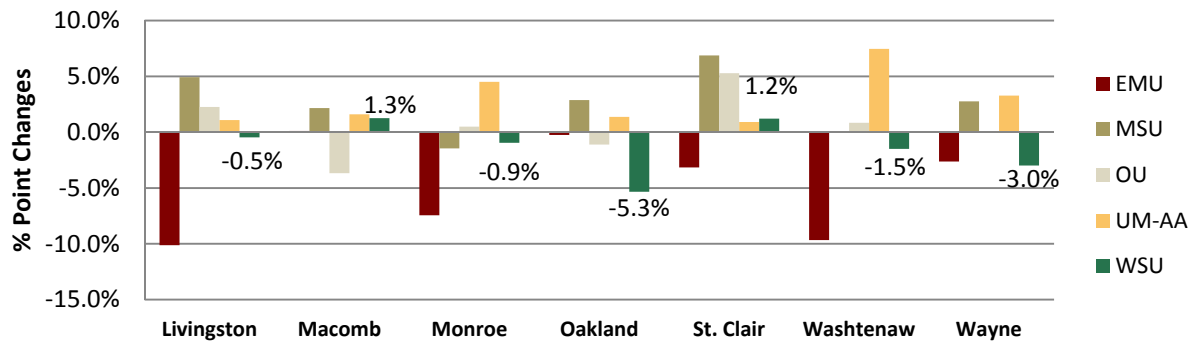
**SE MPU Undergraduate (including FTIAC) Enrollment
Market Share Change by County
Fall 2010 to Fall 2015**



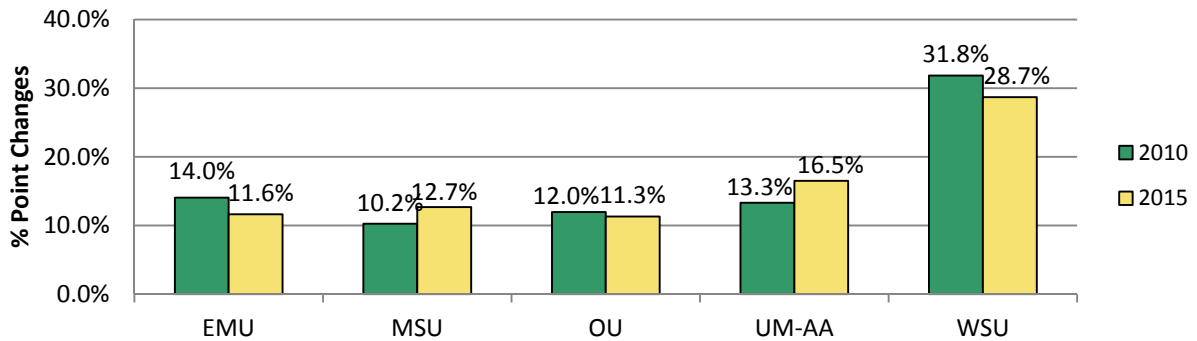
**SE MPU Undergraduate (including FTIAC) Enrollment
Market Share Change by University
Fall 2010 vs. Fall 2015**



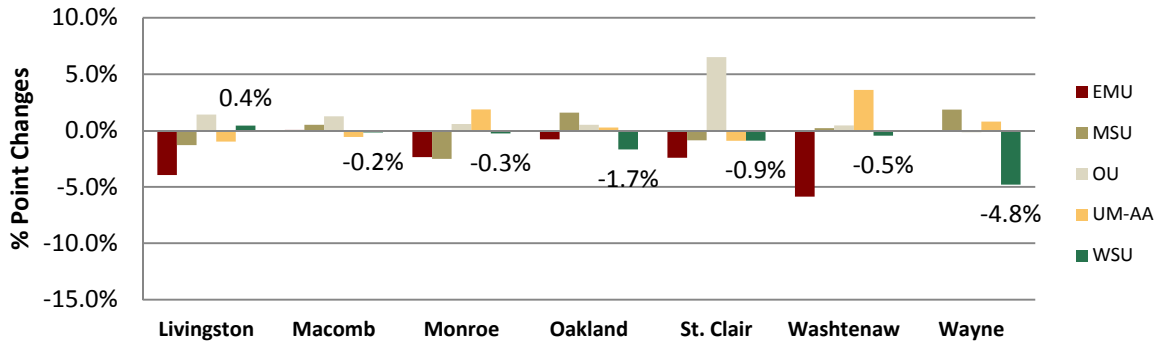
**SE MPU Graduate Enrollment
Market Share Change by County
Fall 2010 - Fall 2015**



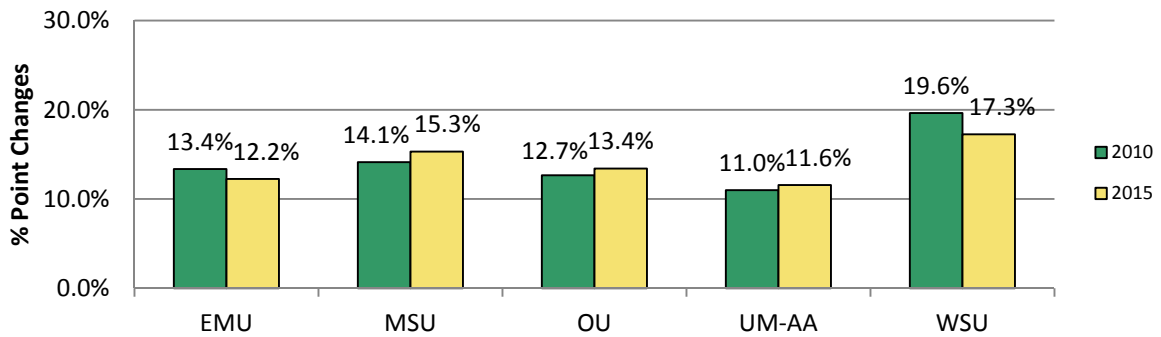
**SE MPU Graduate Enrollment
Market Share Change by University
Fall 2010 vs. Fall 2015**



**SE MPU Total Enrollment
Market Share Change by County
Fall 2010 - Fall 2015**



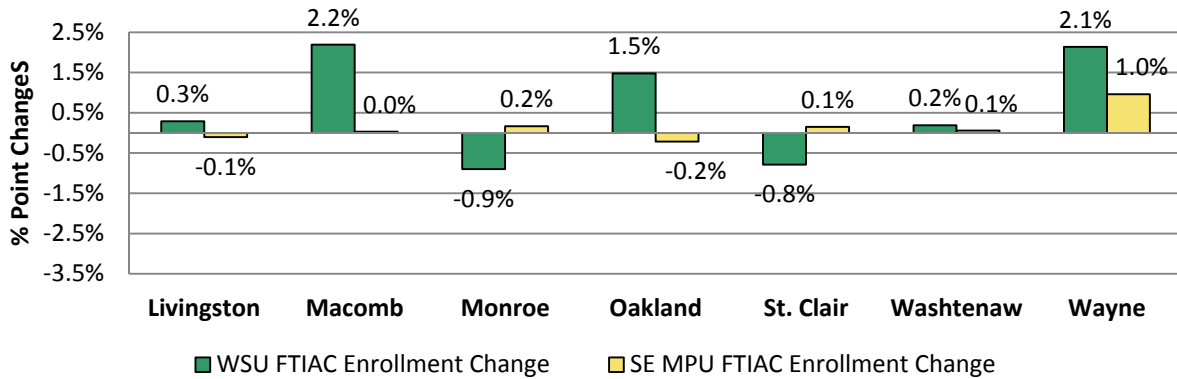
**SE MPU Total Enrollment
Market Share Change by University
Fall 2010 vs. Fall 2015**



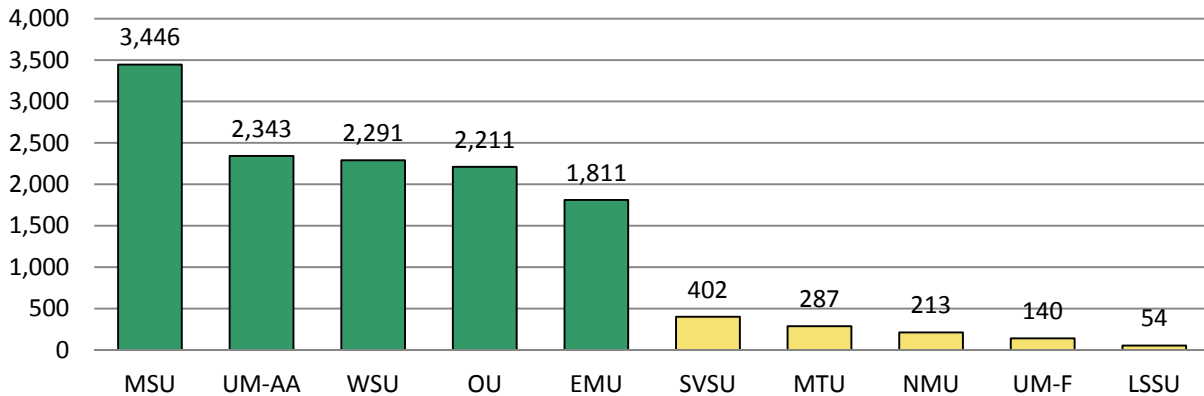
Summary of Wayne State University

FTIAC Enrollment

**Southeastern MPU FTIAC
One Year Enrollment Market Share Change by County
WSU vs MPUs
Fall 2014-Fall 2015**



**Fall 2015 Southeastern MPU FTIAC Enrollment
Top Five and Bottom Five**

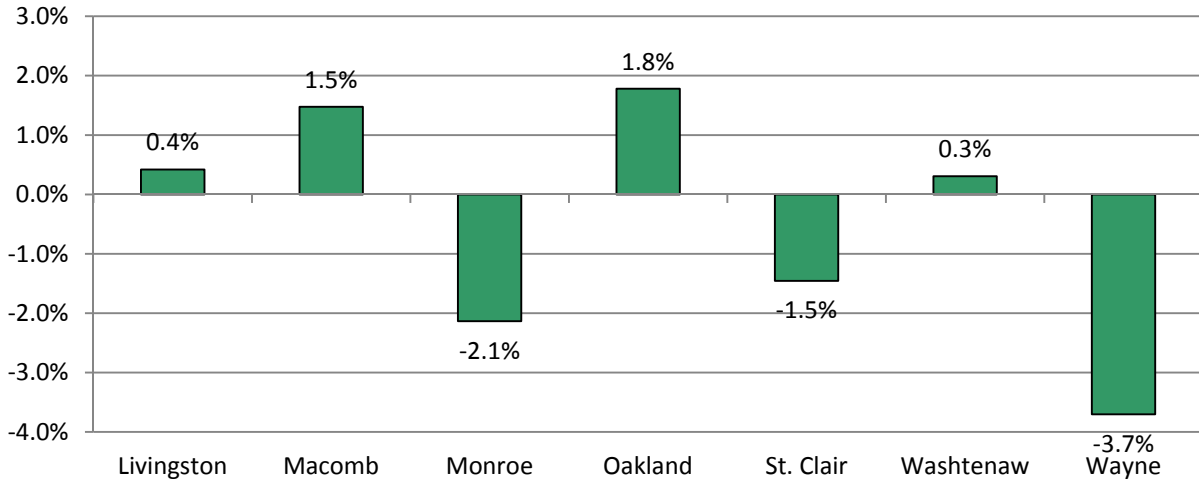


WSU FTIAC Enrollment Statistics – Southeastern Michigan

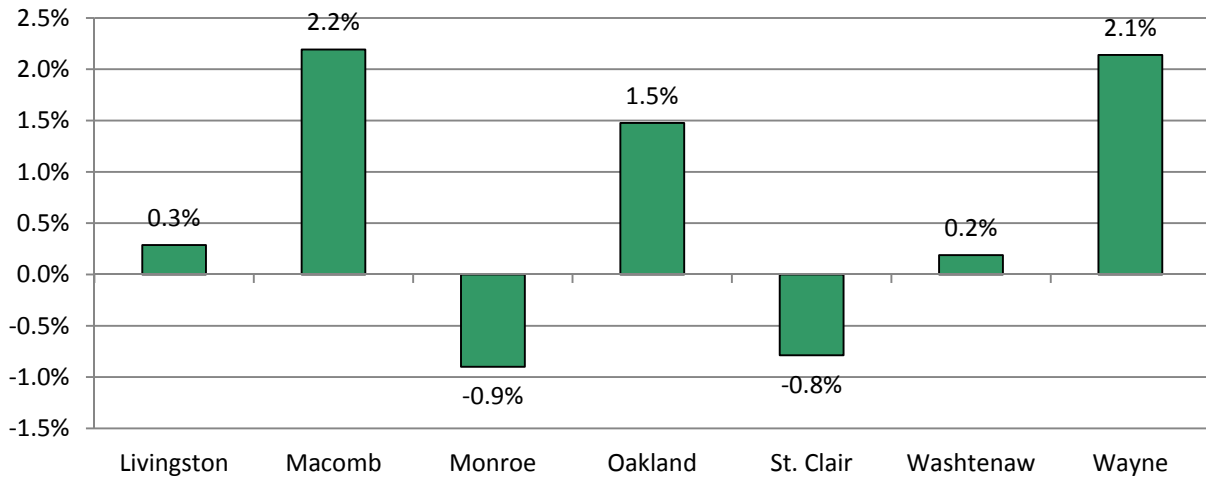
- MPU FTIAC enrollment increased by 1 student (0%) from 2014.
- WSU's FTIAC enrollment increased by 347 students (17.8%) from 2014.
- WSU's FTIAC market share decreased 0.5 percentage points since fall 2010.
- 53.3% of WSU's FTIACs were Wayne County residents in 2015 compared to 53.1% in 2014.
- From 2010 – 2015, WSU's Wayne County resident FTIAC enrollment decreased by 254 (-17.2%), during the same period, Wayne County community colleges decreased enrollment by 12,206 (-22.8%) and Wayne County MPU FTIAC enrollment decreased by 114 (-1.8%).

Wayne State University FTIAC Market Share Change by County

Fall 2010 to Fall 2015 Percentage Point Change



Fall 2014 to Fall 2015 Percentage Point Change

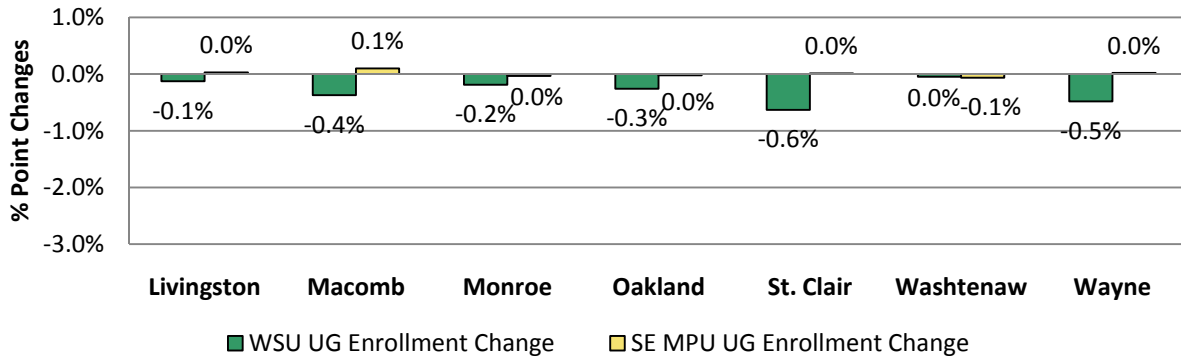


Undergraduate Enrollment

Southeastern MPU Undergraduate (Including FTIAC) One Year Enrollment Market Share Change by County

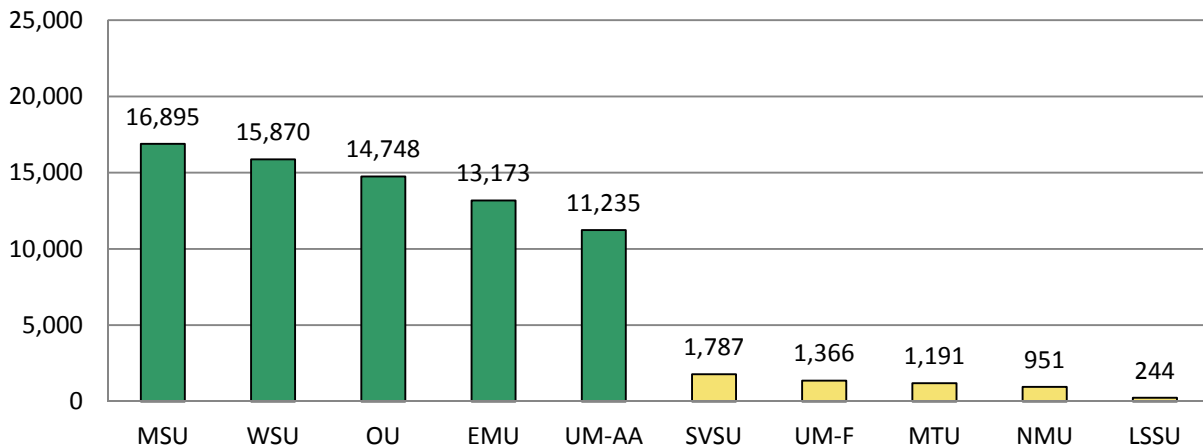
WSU vs MPUs

Fall 2014-Fall 2015



Fall 2015 Southeastern MPU Undergraduate (including FTIAC)

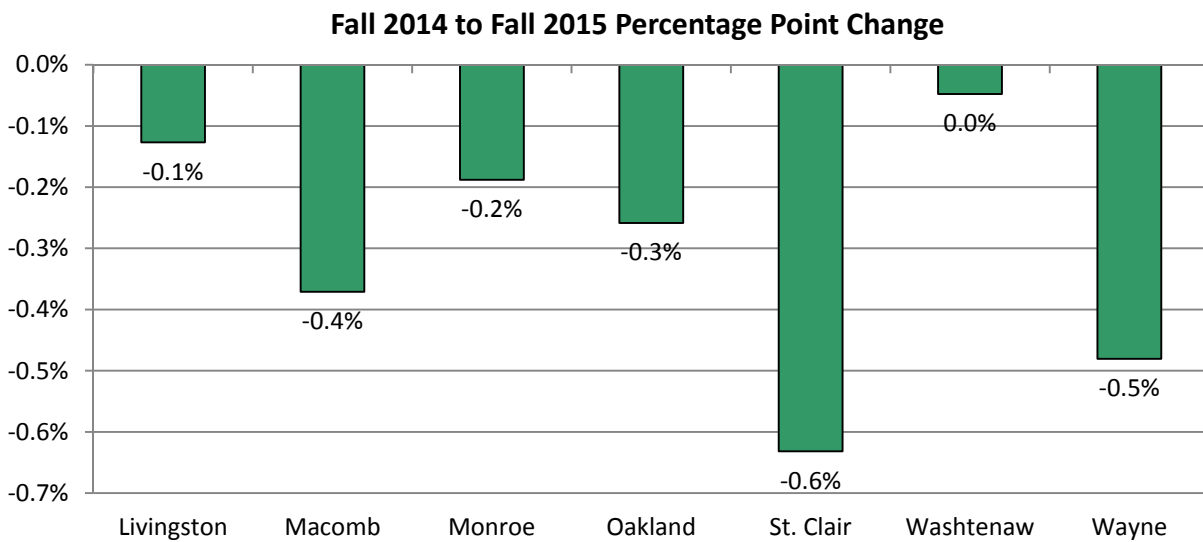
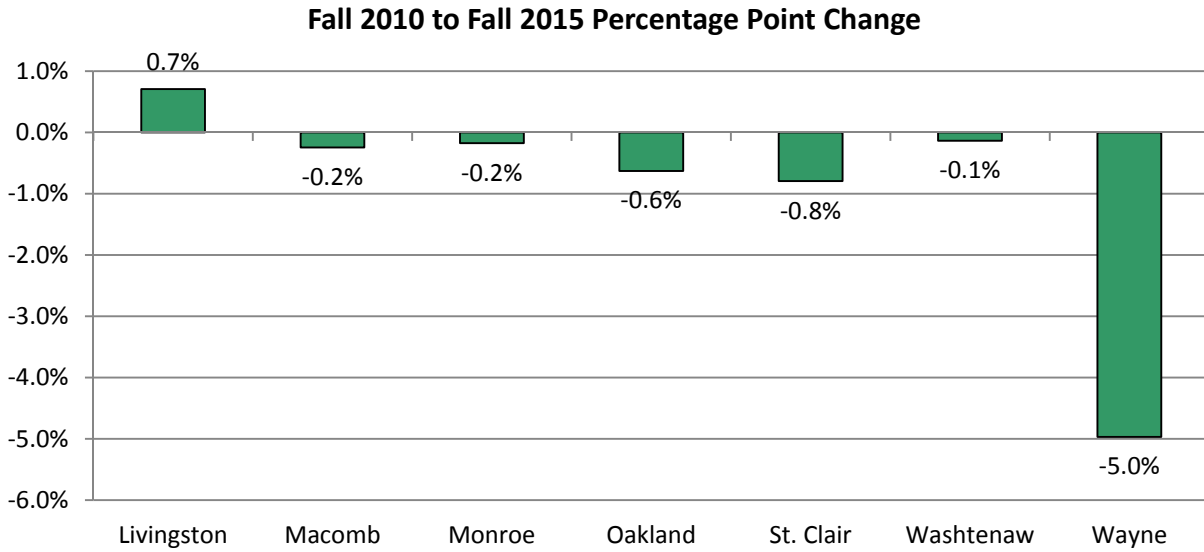
Enrollments Top Five and Bottom Five



WSU Undergraduate Enrollment Statistics – Southeastern Michigan

- MPU undergraduate enrollment decreased 1,568 students (-1.5%) from 2014.
- WSU's undergraduate enrollment decreased 594 students (-3.6%) from 2014.
- WSU's undergraduate market share decreased 5.0 percentage points since fall of 2010.
- 51.0% of WSU's undergraduates were Wayne County residents in 2015 compared to 50.9% in fall 2014.
- From 2010 – 2015, WSU's Wayne County resident UG enrollment decreased by 2,263 (-21.9%), during the same period, Wayne County community colleges decreased enrollment by 12,206 (-22.8%) and Wayne County MPU UG enrollment decreased by 1,912 (-5.2%).

Wayne State University
Undergraduate (including FTIAC) Market Share Change by County

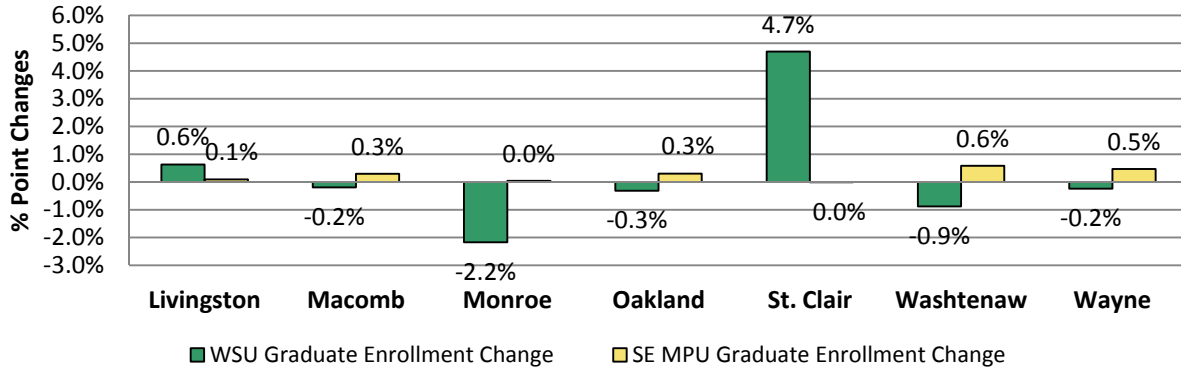


Graduate Enrollment

Southeastern MPU Graduate One Year Enrollment Market Share Change by County

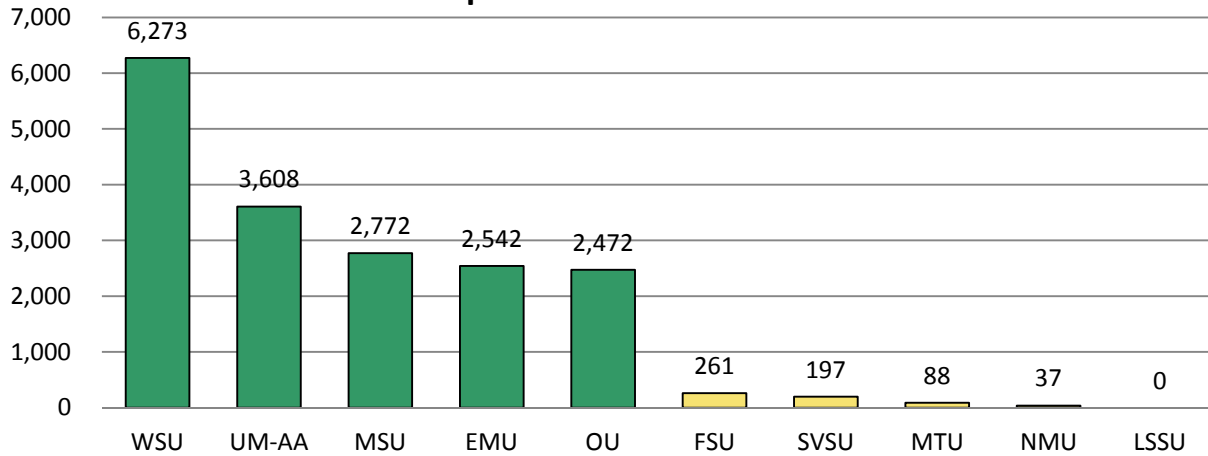
WSU vs MPUs

Fall 2014-Fall 2015



Fall 2015 Southeastern MPU Graduate Enrollments

Top Five and Bottom Five

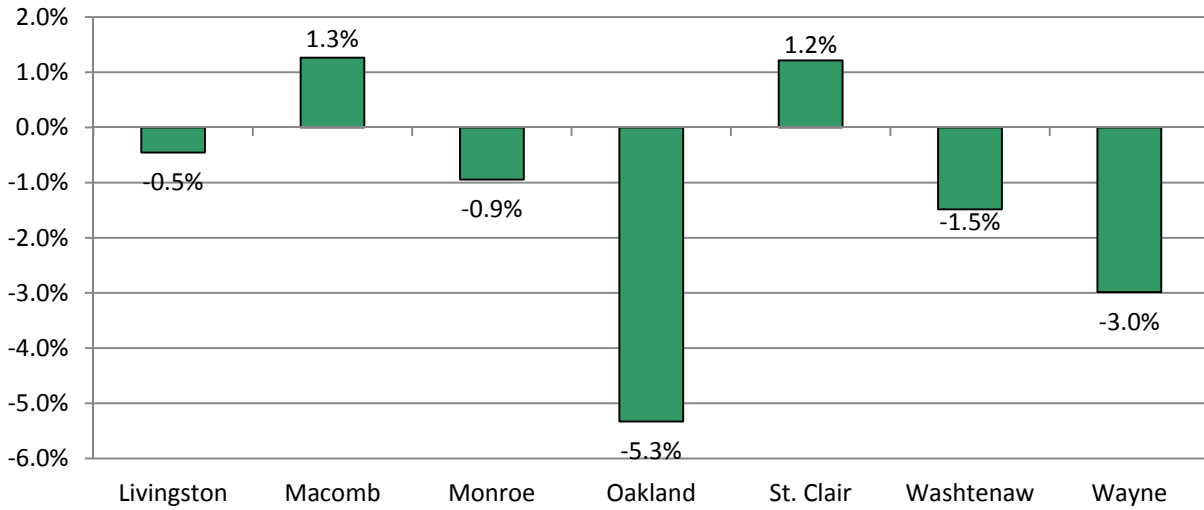


WSU Graduate Enrollment Statistics – Southeastern Michigan Residents

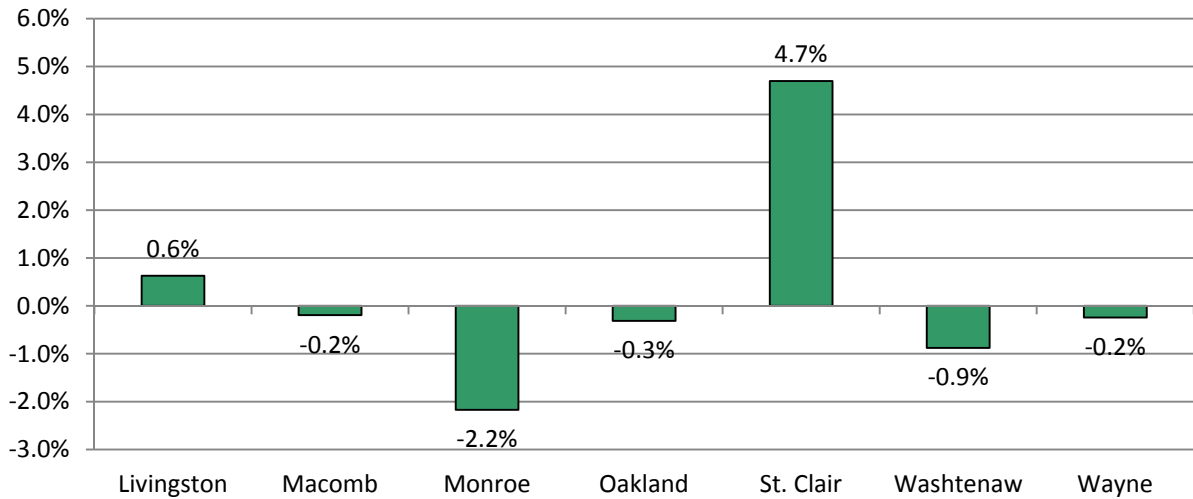
- MPU graduate enrollment increased by 432 students (2.0%) from 2014.
- WSU's graduate enrollment increased 38 students (0.6%) from 2014.
- WSU's graduate market share decreased 3.2% percentage points since fall 2010.
- 40.9% of WSU's graduate students were Wayne County residents in 2015 compared to 40.8% in fall 2014.
- From 2010 – 2015, WSU's Wayne County resident graduate enrollment decreased by 592 (-18.8%), during the same period, Wayne County MPU graduate enrollment decreased by 948 (-12.5%).

**Wayne State University
Graduate Market Share Change by County**

Fall 2010 to Fall 2015 Percentage Point Change

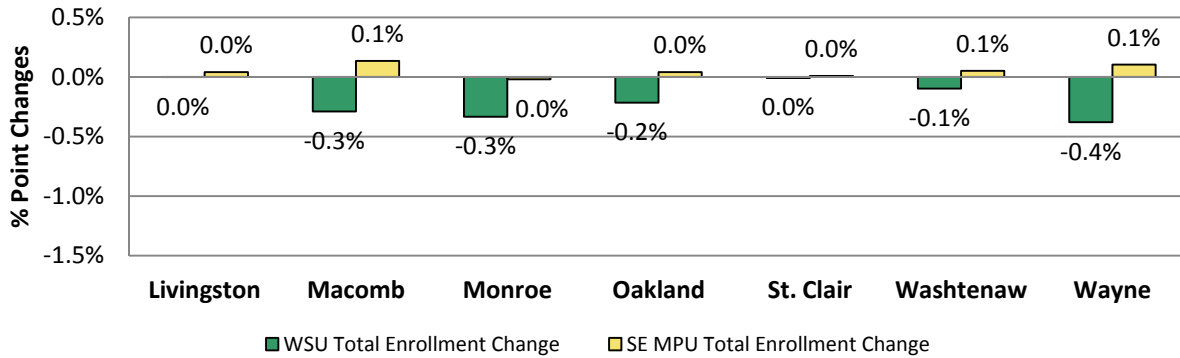


Fall 2014 to Fall 2015 Percentage Point Change

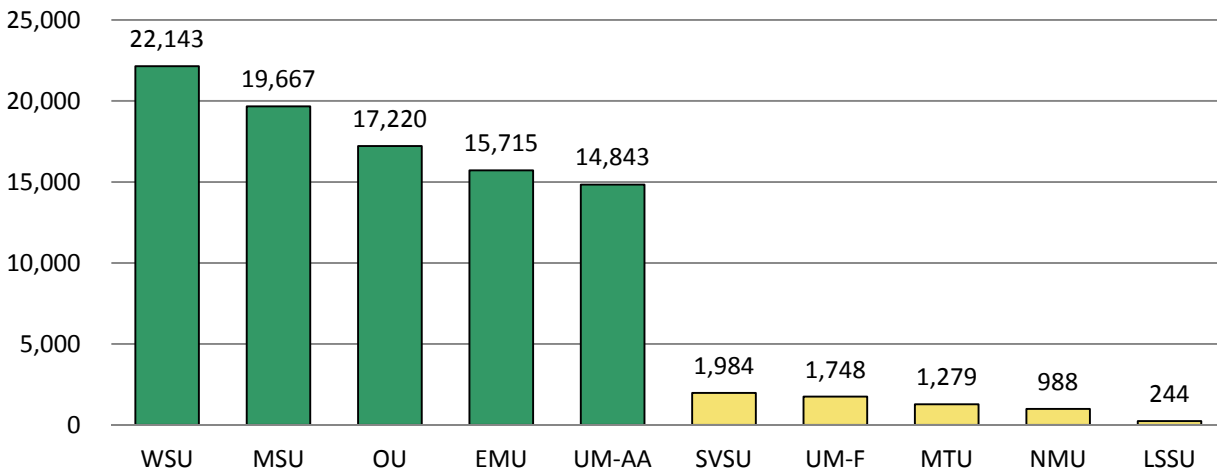


Total Enrollment

Southeastern MPU
One Year Enrollment Market Share Change by County
WSU vs MPUs
 Fall 2014-Fall 2015



Fall 2015 Southeastern MPU Total Enrollments
Top Five and Bottom Five

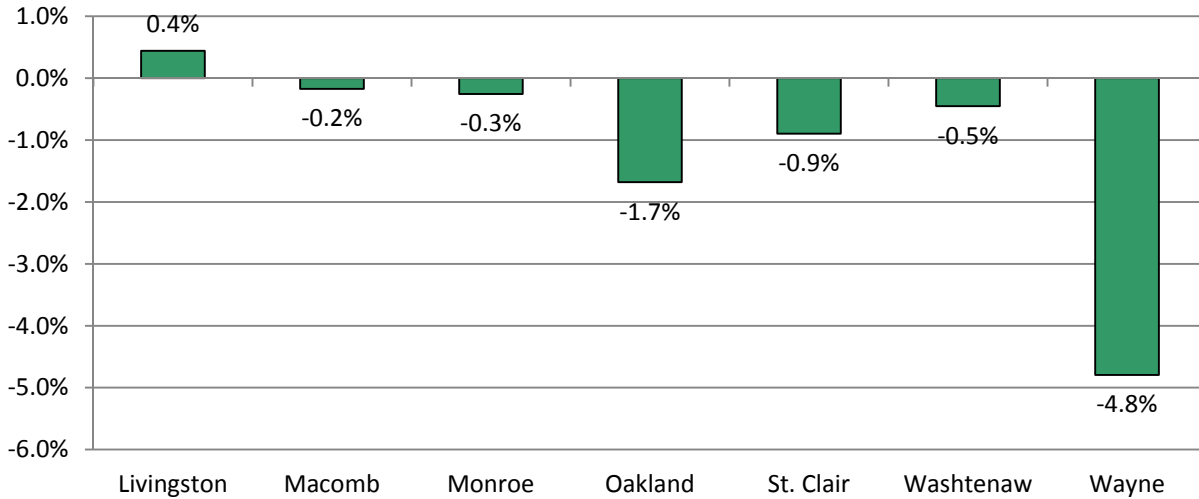


WSU Total Enrollment Statistics – Southeastern Michigan

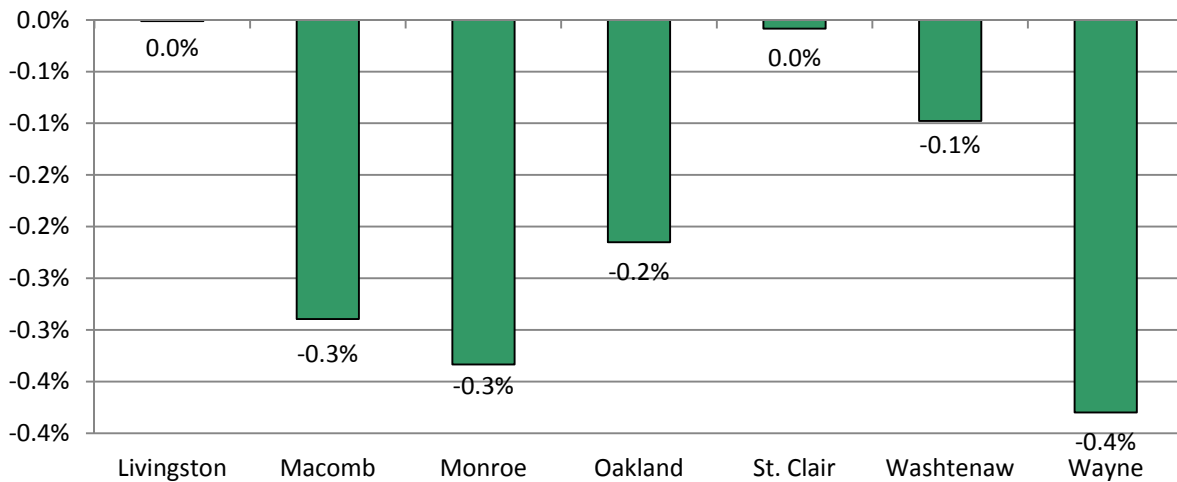
- MPU total enrollment decreased by 1,319 students (-1.0%) from 2014.
- WSU’s total enrollment decreased 556 students (-2.4%) from 2014.
- WSU’s seven county total enrollment market share decreased 2.4 percentage points since fall 2010.
- Wayne County residents accounted for 48.1% of WSU’s total enrollment in 2015.
- From 2010 – 2015, WSU’s total enrollment for Wayne County residents decreased by 2,855 (-21.1%), during the same period, Wayne County community colleges decreased enrollment by 12,206 (-22.8%) and total enrollment for Wayne County MPU decreased by 2,860 (-6.5%).

**Wayne State University
Southeastern MI Total Enrollment Market Share Change by County**

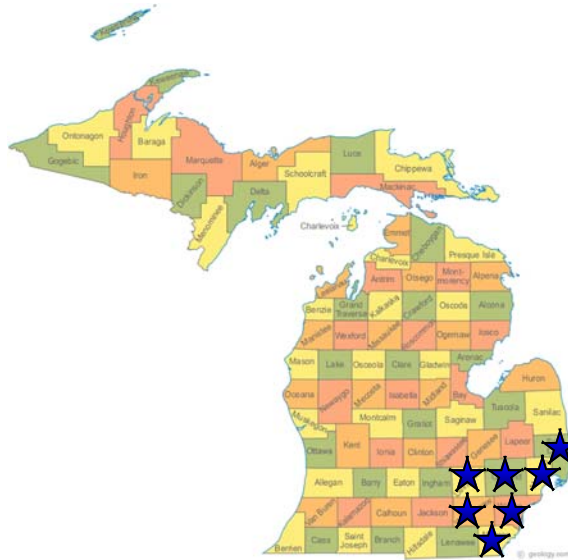
Fall 2010 to Fall 2015 Percentage Point Change



Fall 2014 to Fall 2015 Percentage Point Change

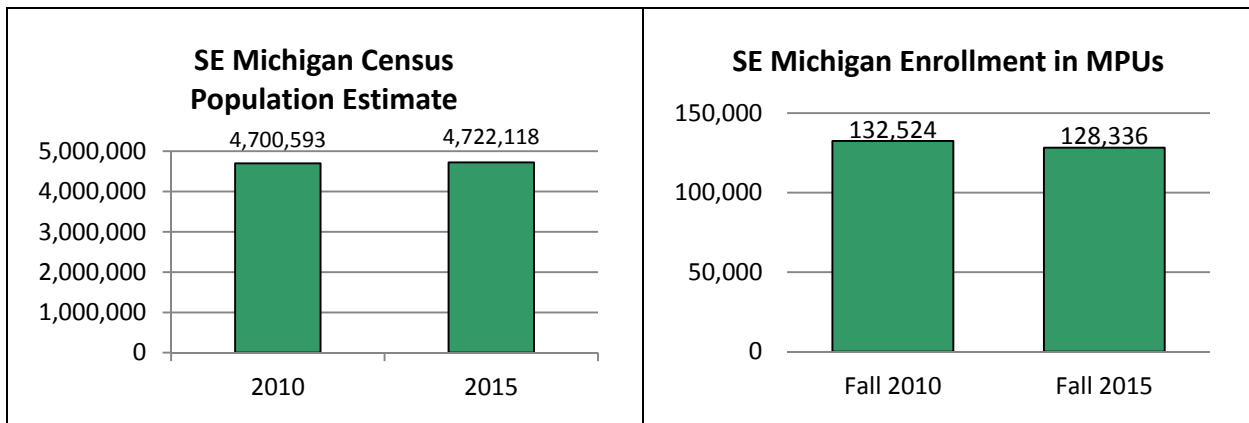
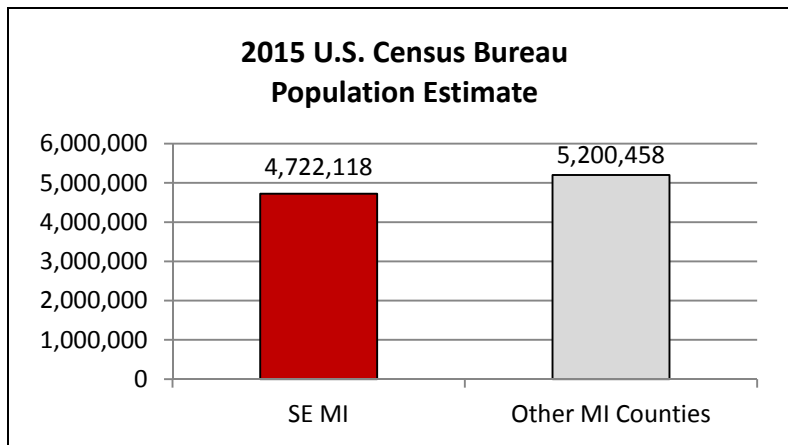


Summary of Southeastern Michigan Counties



Demographics

The demographics provide the contextual information for the analysis that follows this page.

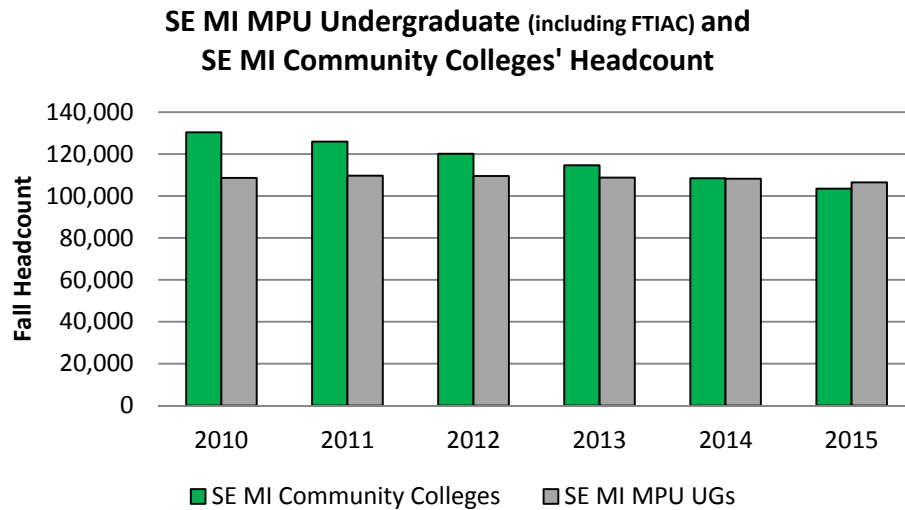


Summary of Southeastern Michigan Counties

Community Colleges in Southeastern Michigan:

Enrollment at Community Colleges in Southeastern Michigan Counties	
Fall 2010	130,386
Fall 2015	103,472
Community College Enrollment Cumulative % Change	-20.6%
SE Michigan MPU UG Enrollment % Change	-2.0%

Source: www.michigancc.net



Source: www.michigancc.net

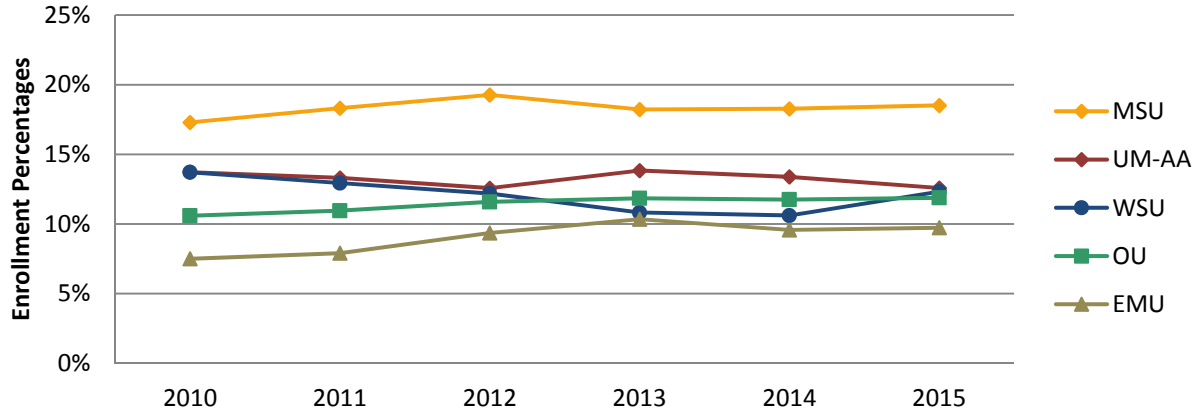
Top five High Schools in Southeastern Michigan by enrollment:

High School Name	City	County	Fall 2015 Total Enrollment	Fall 2010 Total Enrollment	% Change
Dakota High School	Macomb	Macomb	2,917	2,519	15.8%
Howell High School	Howell	Livingston	2,486	2,682	-7.3%
Fordson High School	Dearborn	Wayne	2,462	2,356	4.5%
Chippewa Valley High School	Clinton Township	Macomb	2,441	2,383	2.4%
Cass Technical High School	Detroit	Wayne	2,370	2,138	1%

Source: *Center for Educational Performance and Information*

Market Share – Top Four Enrollments vs. WSU

Southeastern MPU FTIAC Enrollment Market Share

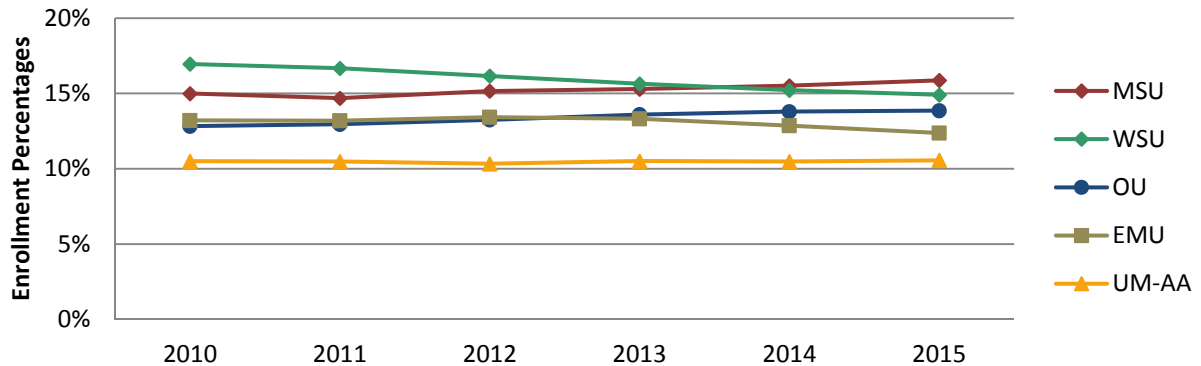


2010 Headcount 18,671

2015 Headcount 18,613

- Largest market share gain from 2010 – 2015: Eastern Michigan University 2.2% points
- Largest market share loss from 2010 – 2015: Central Michigan University -2.2% points

Southeastern MPU Undergraduate (including FTIAC) Enrollment Market Share

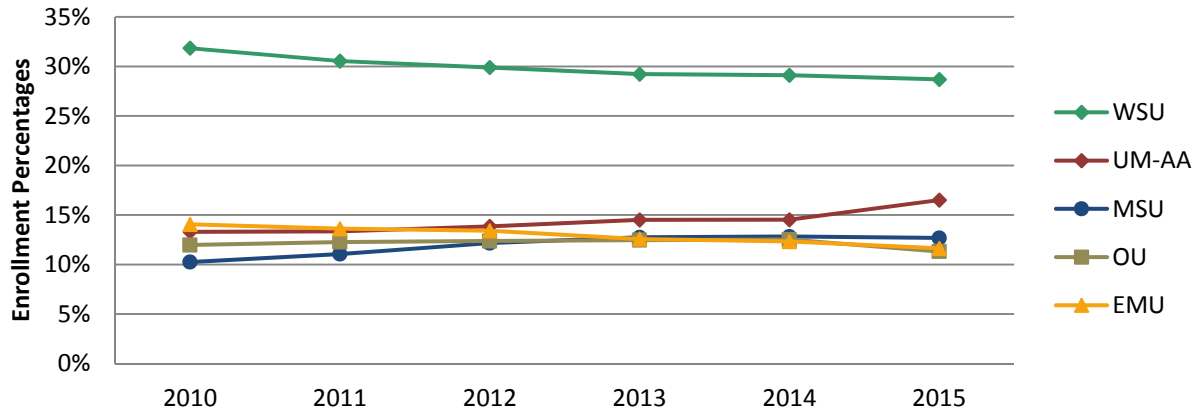


2010 Headcount 108,634

2015 Headcount 106,467

- Largest market share gain from 2010 – 2015: Grand Valley State University 1.2% points
- Largest market share loss from 2010 – 2015: Wayne State University -2.0% points

Southeastern MPU Graduate Enrollment Market Share

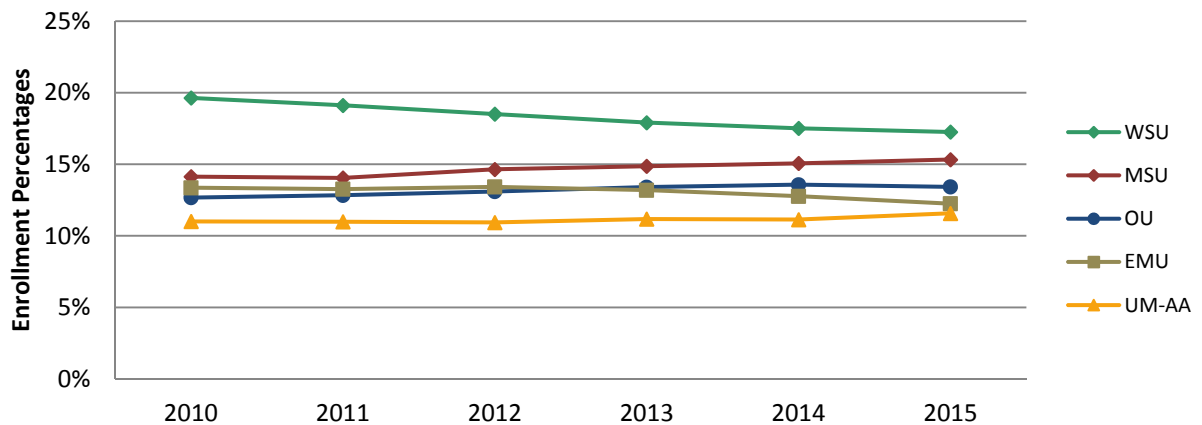


2010 Headcount 23,890

2015 Headcount 21,869

- Largest market share gain from 2010 – 2015: University of Michigan – AA 3.2% points
- Largest market share loss from 2010 – 2015: Wayne State University -3.2% points

Southeastern MPU Total Enrollment Market Share

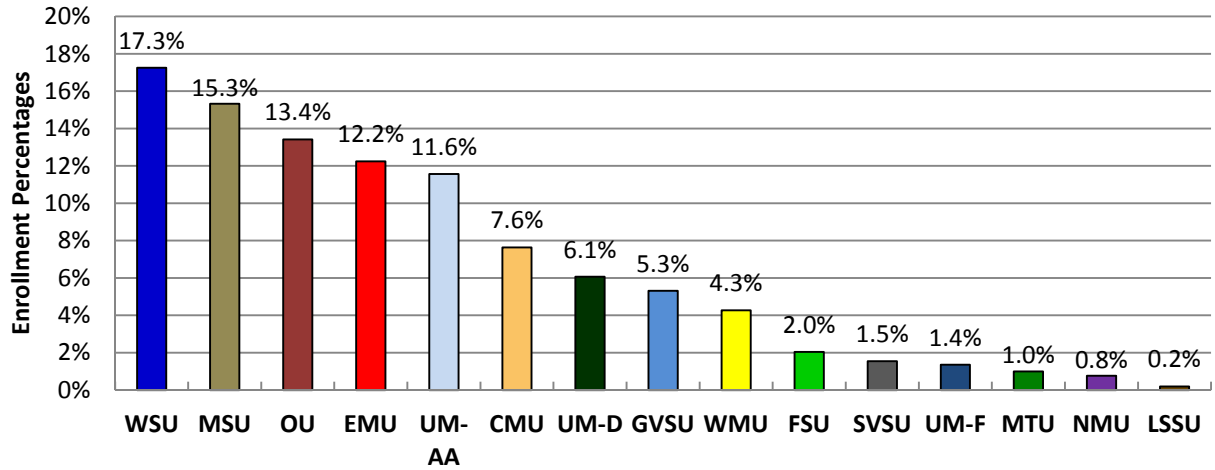


2010 Headcount 132,524

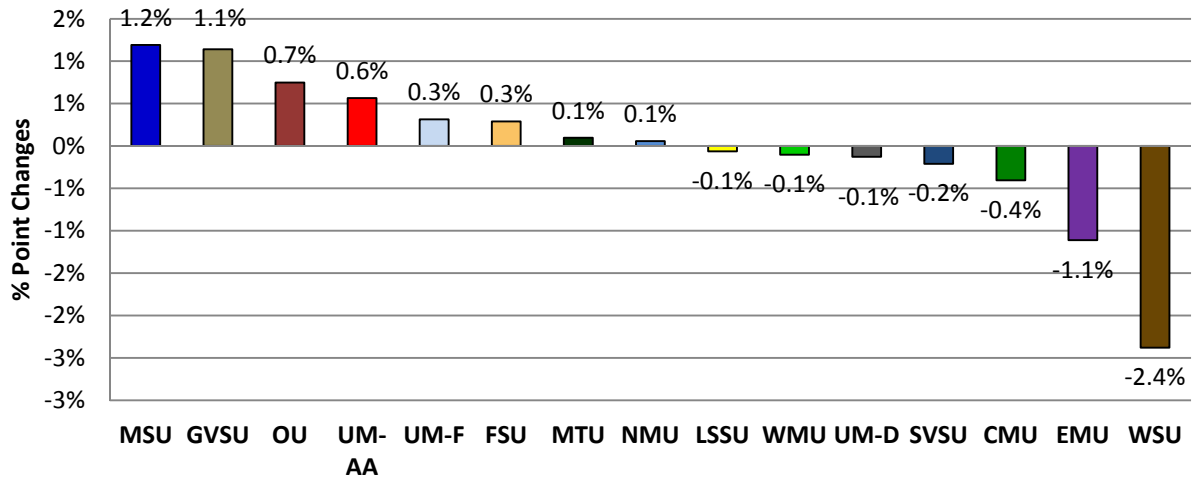
2015 Headcount 128,336

- Largest market share gain from 2010 – 2015: Michigan State University 1.2% points
- Largest market share loss from 2010 – 2015: Wayne State University -2.4% points

Southeastern MPU Total Enrollment Market Share Fall 2015

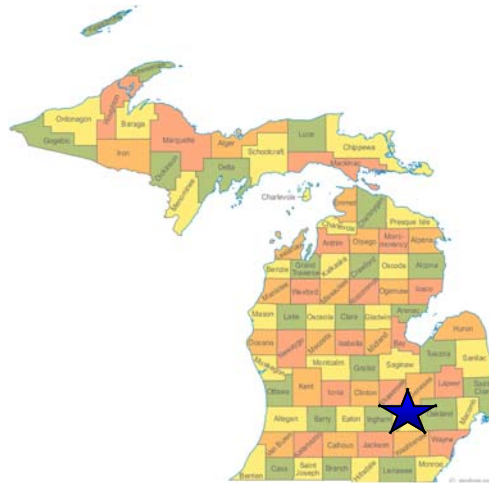


Southeastern MPU Total Enrollment Market Share Change Fall 2010 - Fall 2015



This page left blank intentionally

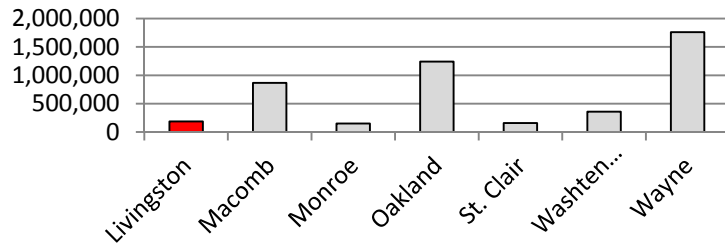
Livingston County



Demographics

The demographics provide the contextual information for the analysis that follows this page. Included in demographics are the total county population and the percent of the population over the age 25 that have a Bachelor’s degree or higher.

2015 U.S. Census Bureau
Population Estimate by County



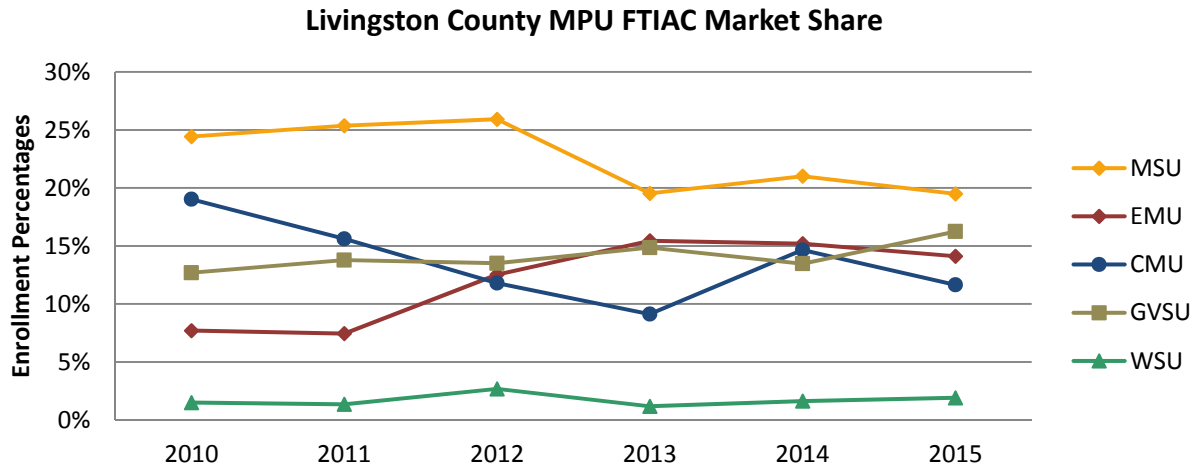
<p>Livingston County Census Population</p> <p>2010: 181,028 2015: 187,316</p>	<table border="1"> <thead> <tr> <th>County</th> <th>% Population Age 25+ w/ a Bachelor's Degree or higher</th> </tr> </thead> <tbody> <tr> <td>LIVINGSTON</td> <td>32.9%</td> </tr> <tr> <td>MACOMB</td> <td>22.5%</td> </tr> <tr> <td>MONROE</td> <td>18.0%</td> </tr> <tr> <td>OAKLAND</td> <td>43.1%</td> </tr> <tr> <td>ST. CLAIR</td> <td>16.3%</td> </tr> <tr> <td>WASHTENAW</td> <td>51.3%</td> </tr> <tr> <td>WAYNE</td> <td>21.3%</td> </tr> </tbody> </table> <p>Source: U.S. Census Bureau State & County Quick Facts (2014)</p>	County	% Population Age 25+ w/ a Bachelor's Degree or higher	LIVINGSTON	32.9%	MACOMB	22.5%	MONROE	18.0%	OAKLAND	43.1%	ST. CLAIR	16.3%	WASHTENAW	51.3%	WAYNE	21.3%	<p>Livingston County Enrollment in MPUs</p> <p>Fall 2010: 5,231 Fall 2015: 5,699</p>
County	% Population Age 25+ w/ a Bachelor's Degree or higher																	
LIVINGSTON	32.9%																	
MACOMB	22.5%																	
MONROE	18.0%																	
OAKLAND	43.1%																	
ST. CLAIR	16.3%																	
WASHTENAW	51.3%																	
WAYNE	21.3%																	

Top five Livingston County Public High Schools by Enrollment:

High School Name	City/Township	Fall 2015 Enrollment	Fall 2010 Enrollment	% Change
Howell High School	Howell	2,486	2,682	-7%
Brighton High School	Brighton	2,074	2,039	2%
Hartland High School	Hartland	1,919	1,800	7%
Pinckney Community High School	Pinckney	1,296	1,470	-12%
Fowlerville High School	Fowlerville	867	939	-8%

Source: Center for Educational Performance and Information

Market Share– Top Four Enrollments vs. WSU

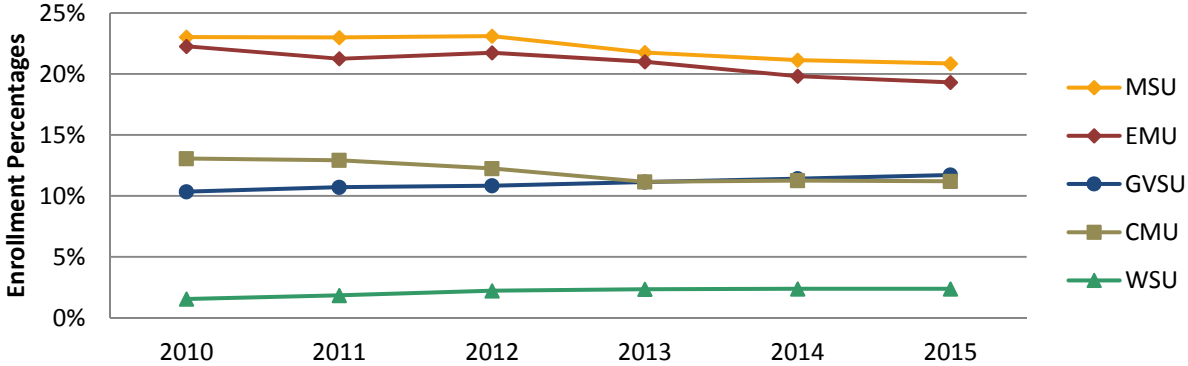


2010 Headcount 741

2015 Headcount 893

- Largest market share gain from 2010 – 2015: Eastern Michigan University 6.4% points
- Largest market share loss from 2010 – 2015: Central Michigan University -7.4% points

**Livingston County MPU Undergraduate (including FTIAC)
Enrollment Market Share**

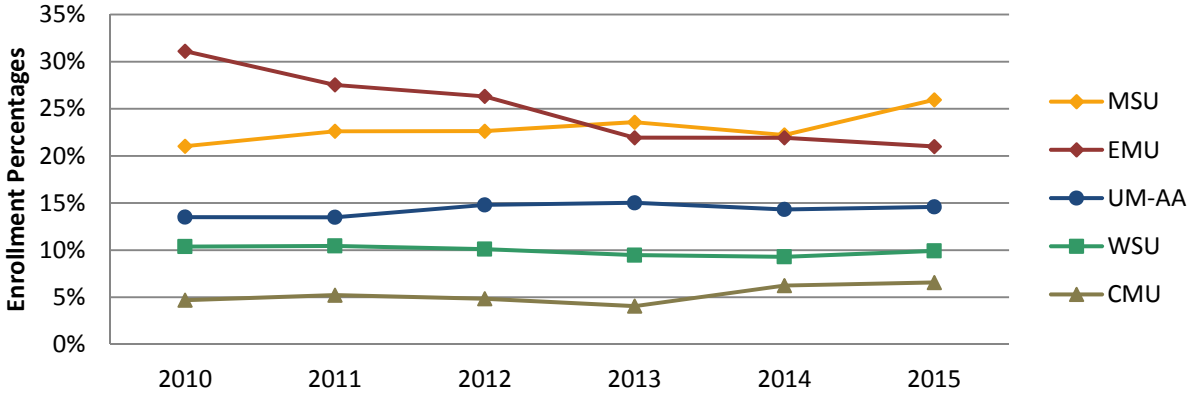


2010 Headcount 4,527

2015 Headcount 5,013

- Largest market share gain from 2010 – 2015: University of Michigan-Flint 2.6% points
- Largest market share loss from 2010 – 2015: Central Michigan University -3.0% points

Livingston County MPU Graduate Enrollment Market Share

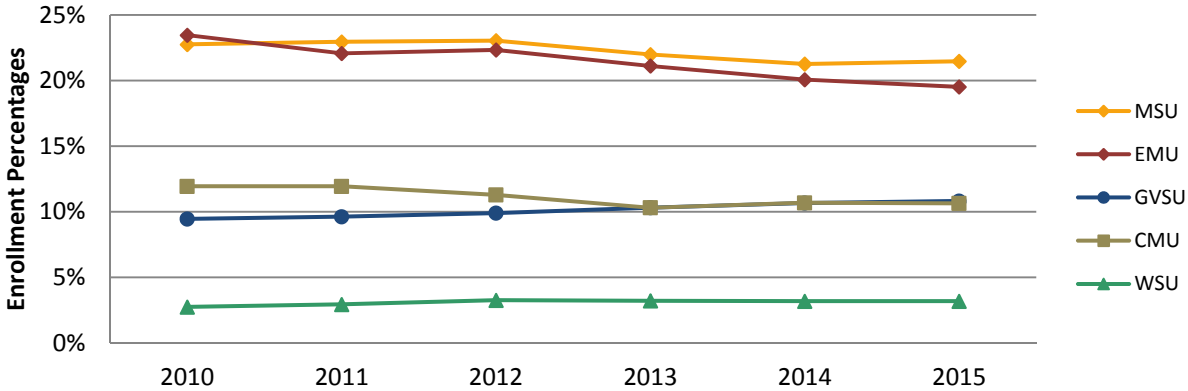


2010 Headcount 704

2015 Headcount 686

- Largest market share gain from 2010 – 2015: Michigan State University 4.9% points
- Largest market share loss from 2010 – 2015: Eastern Michigan University -10.1% points

Livingston County MPU Total Enrollment Market Share

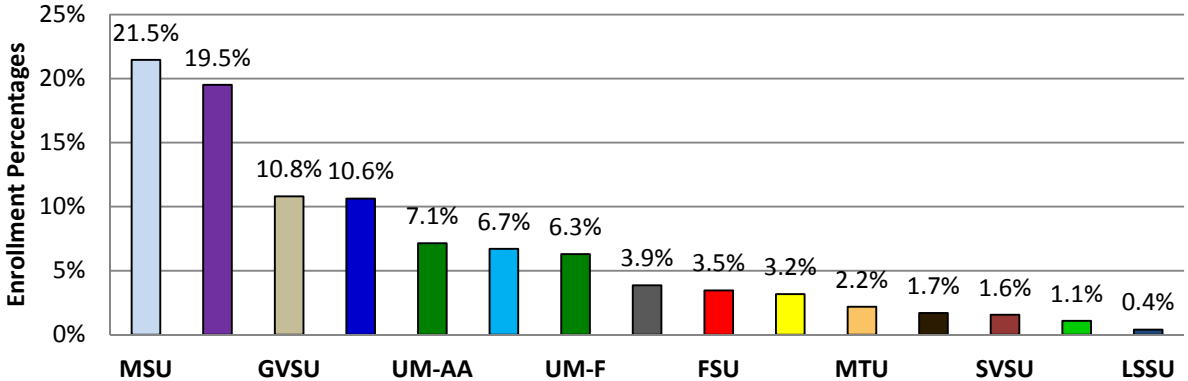


2010 Headcount 5,231

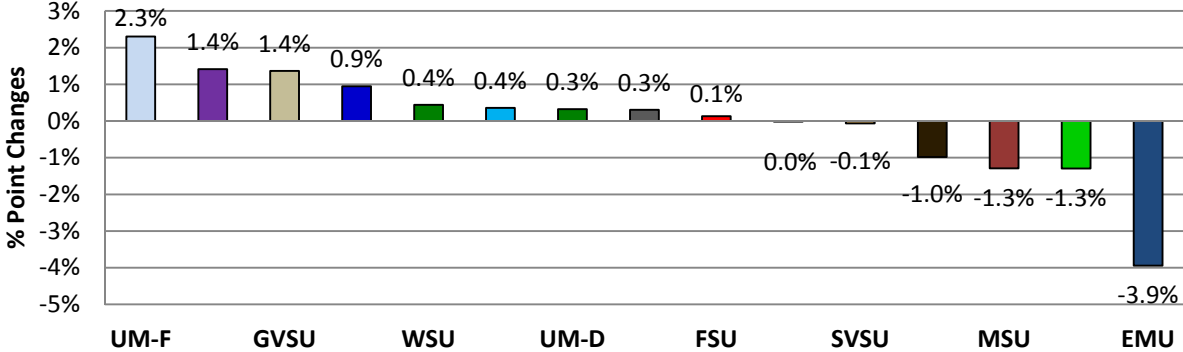
2015 Headcount 5,699

- Largest market share gain from 2010 – 2015: University of Michigan-Flint 2.3% points
- Largest market share loss from 2010 – 2015: Eastern Michigan University -3.9% points

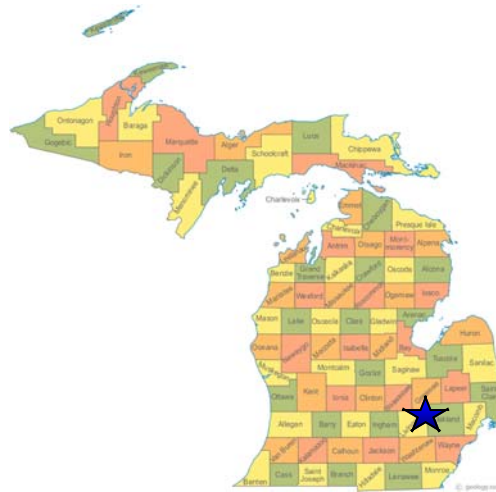
Livingston County MPU Total Enrollment Market Share Fall 2015



Livingston County MPU Total Enrollment Market Share Change
Fall 2010 - Fall 2015



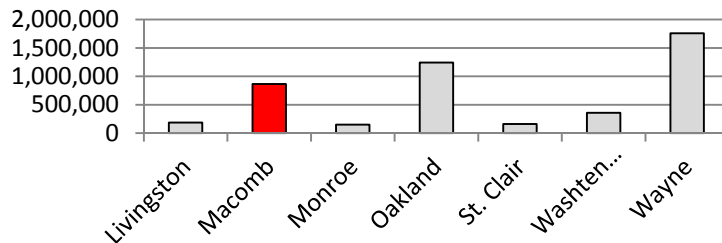
Macomb County



Demographics

The demographics provide the contextual information for the analysis that follows this page. Included in demographics are the total county population and the percent of the population over the age 25 that have a Bachelor’s degree or higher.

2015 U.S. Census Bureau
Population Estimate by County

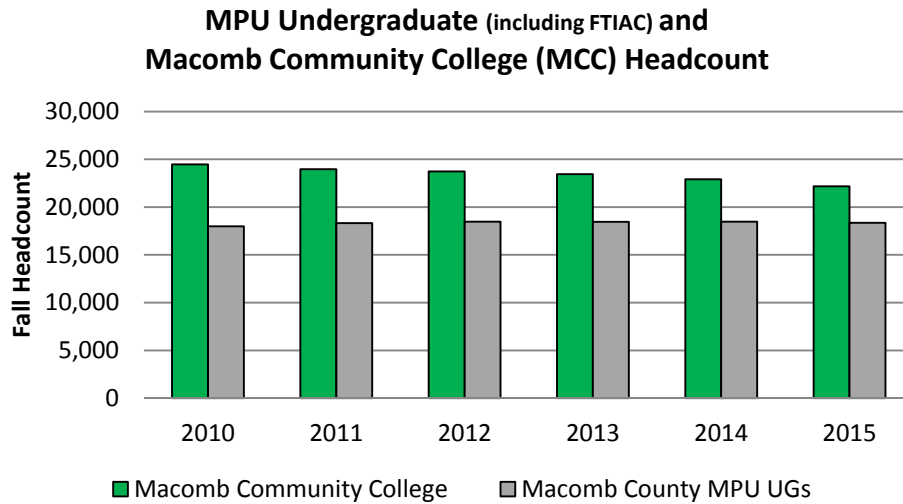


<p>Macomb County Census Population</p> <p>2010: 841,247 2015: 864,840</p>	<table border="1"> <thead> <tr> <th>County</th> <th>% Population Age 25+ w/ a Bachelor's Degree or higher</th> </tr> </thead> <tbody> <tr> <td>LIVINGSTON</td> <td>32.9%</td> </tr> <tr> <td>MACOMB</td> <td>22.5%</td> </tr> <tr> <td>MONROE</td> <td>18.0%</td> </tr> <tr> <td>OAKLAND</td> <td>43.1%</td> </tr> <tr> <td>ST. CLAIR</td> <td>16.3%</td> </tr> <tr> <td>WASHTENAW</td> <td>51.3%</td> </tr> <tr> <td>WAYNE</td> <td>21.3%</td> </tr> </tbody> </table> <p>Source: U.S. Census Bureau State & County Quick Facts (2014)</p>	County	% Population Age 25+ w/ a Bachelor's Degree or higher	LIVINGSTON	32.9%	MACOMB	22.5%	MONROE	18.0%	OAKLAND	43.1%	ST. CLAIR	16.3%	WASHTENAW	51.3%	WAYNE	21.3%	<p>Macomb County Enrollment in MPUs</p> <p>Fall 2010: 21,482 Fall 2015: 21,606</p>
County	% Population Age 25+ w/ a Bachelor's Degree or higher																	
LIVINGSTON	32.9%																	
MACOMB	22.5%																	
MONROE	18.0%																	
OAKLAND	43.1%																	
ST. CLAIR	16.3%																	
WASHTENAW	51.3%																	
WAYNE	21.3%																	

Macomb Community College:

Enrollment at Macomb Community College	
Fall 2010	24,468
Fall 2015	22,182
% Change	-9.3%
% Point Change in SE MI CC Market Share	2.7%

Source: www.michigancc.net



Source: www.michigancc.net

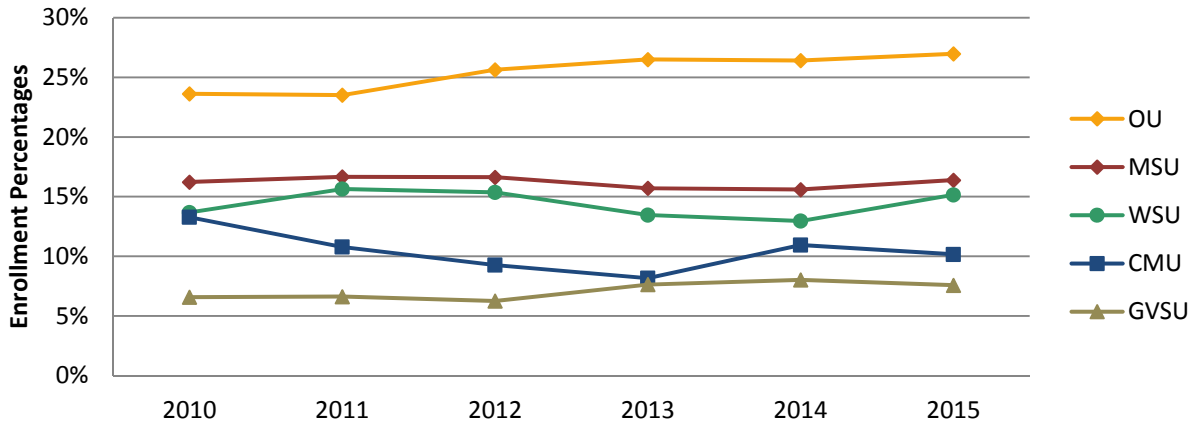
Top five Macomb County Public High Schools by enrollment:

High School Name	City/Township	Fall 2015 Enrollment	Fall 2010 Enrollment	% Change
Dakota High School	Macomb	2,917	2,519	16%
Chippewa Valley High School	Clinton Township	2,441	2,383	2%
Eisenhower High School	Shelby Township	2,016	2,105	-4%
Henry Ford II High School	Sterling Heights	2,009	2,085	-4%
Anchor Bay High School	Fair Haven	1,956	1,880	4%

Source: *Center for Educational Performance and Information*

Market Share – Top Four Enrollments vs. WSU

Macomb County MPU FTIAC Market Share

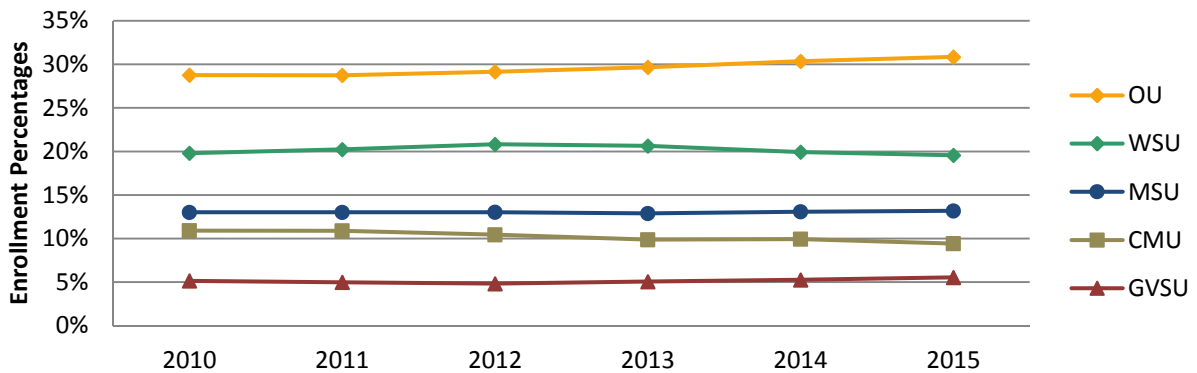


2010 Headcount 3,057

2015 Headcount 3,089

- Largest market share gain from 2010 – 2015: Oakland University 3.3% points
- Largest market share loss from 2010 – 2015: Central Michigan University -3.1% points

Macomb County MPU Undergraduate (including FTIAC) Enrollment Market Share

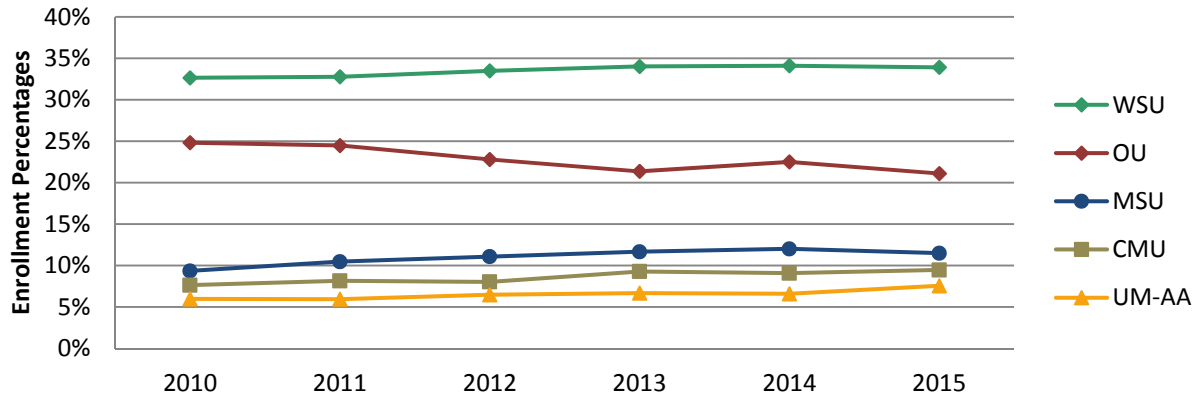


2010 Headcount 17,996

2015 Headcount 18,356

- Largest market share gain from 2010 – 2015: Oakland University 2.1% points
- Largest market share loss from 2010 – 2015: Central Michigan University -1.5% points

Macomb County MPU Graduate Enrollment Market Share

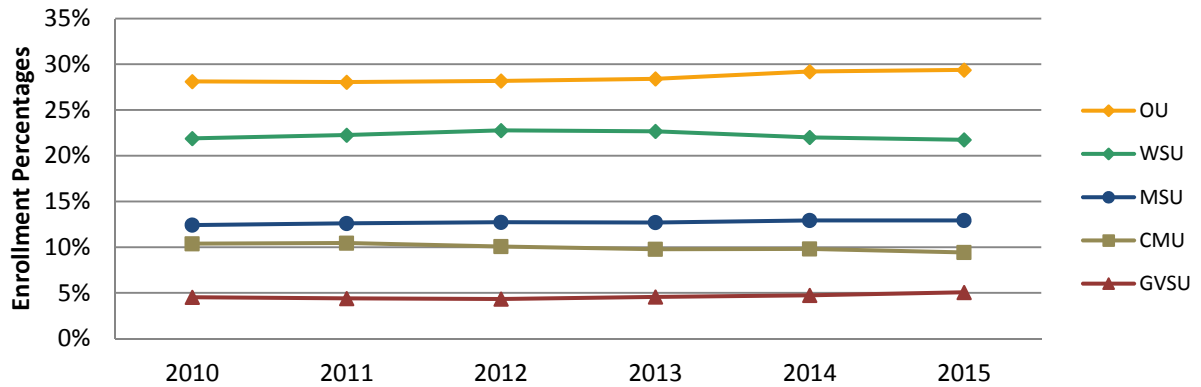


2010 Headcount 3,486

2015 Headcount 3,250

- Largest market share gain from 2010 – 2015: Michigan State University 2.2% points
- Largest market share loss from 2010 – 2015: Saginaw Valley State University -6.4% points

Macomb County MPU Total Enrollment Market Share

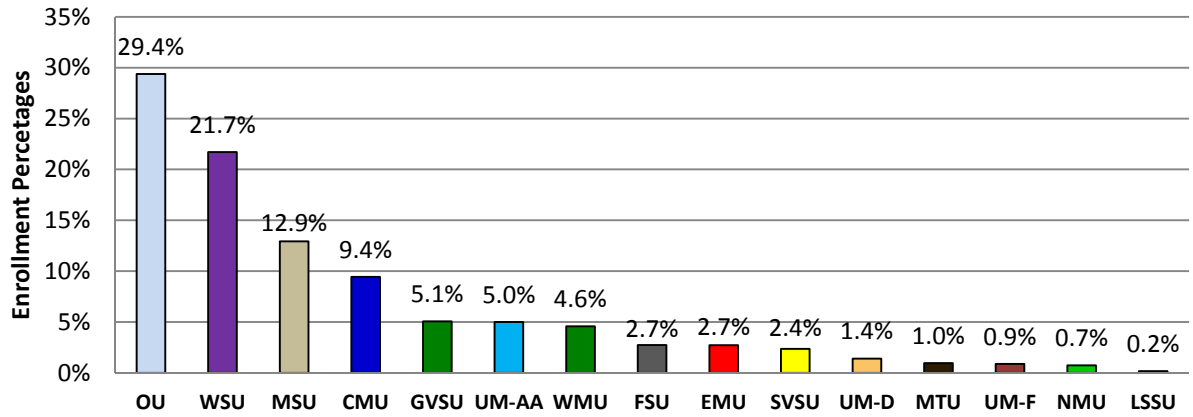


2010 Headcount 21,482

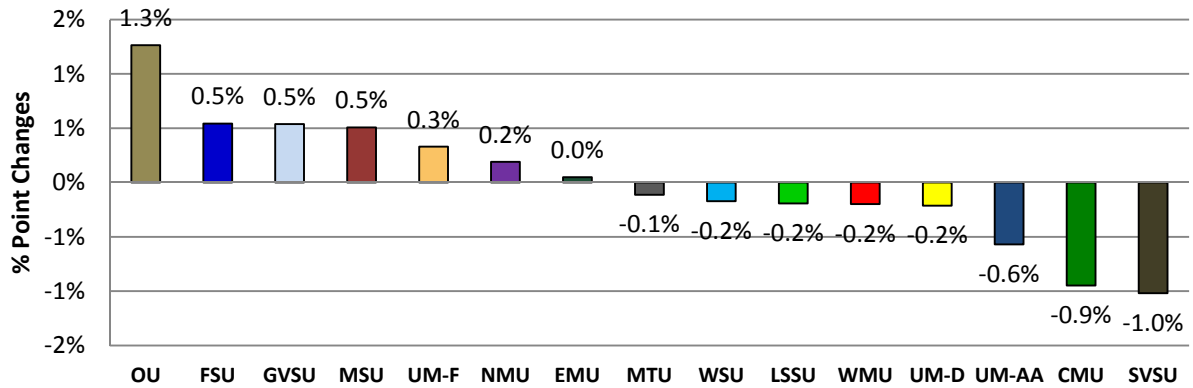
2015 Headcount 21,606

- Largest market share gain from 2010 – 2015: Oakland University 1.3% points
- Largest market share loss from 2010 – 2015 : Saginaw Valley State University -1.0% points

Macomb County MPU Total Enrollment Market Share Fall 2015

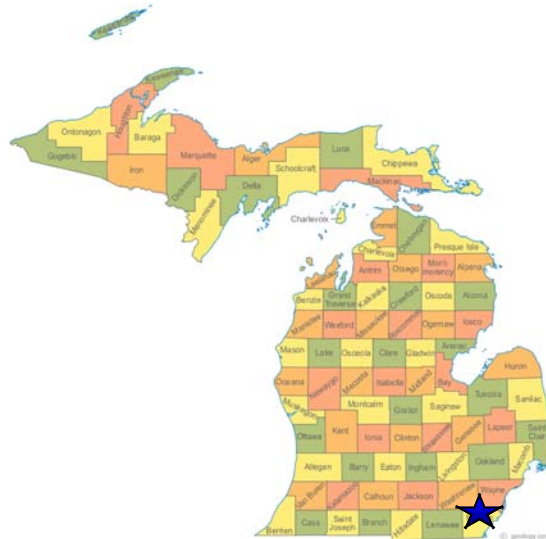


Macomb County MPU Total Enrollment Market Share Change
Fall 2010 - Fall 2015



This page left blank intentionally

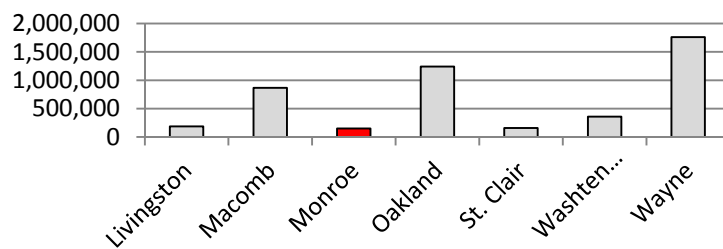
Monroe County



Demographics

The demographics provide the contextual information for the analysis that follows this page. Included in demographics are the total county population and the percent of the population over the age 25 that have a Bachelor’s degree or higher.

**2015 U.S. Census Bureau
Population Estimate by County**



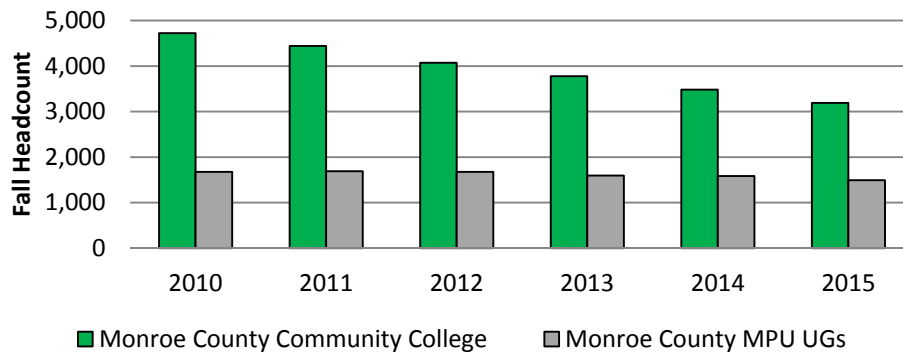
<p>Monroe County Census Population</p> <table border="1"> <thead> <tr> <th>Year</th> <th>Population</th> </tr> </thead> <tbody> <tr> <td>2010</td> <td>151,945</td> </tr> <tr> <td>2015</td> <td>149,568</td> </tr> </tbody> </table>	Year	Population	2010	151,945	2015	149,568	<table border="1"> <thead> <tr> <th>County</th> <th>% Population Age 25+ w/ a Bachelor's Degree or higher</th> </tr> </thead> <tbody> <tr> <td>LIVINGSTON</td> <td>32.9%</td> </tr> <tr> <td>MACOMB</td> <td>22.5%</td> </tr> <tr> <td>MONROE</td> <td>18.0%</td> </tr> <tr> <td>OAKLAND</td> <td>43.1%</td> </tr> <tr> <td>ST. CLAIR</td> <td>16.3%</td> </tr> <tr> <td>WASHTENAW</td> <td>51.3%</td> </tr> <tr> <td>WAYNE</td> <td>21.3%</td> </tr> </tbody> </table> <p>Source: U.S. Census Bureau State & County Quick Facts</p>	County	% Population Age 25+ w/ a Bachelor's Degree or higher	LIVINGSTON	32.9%	MACOMB	22.5%	MONROE	18.0%	OAKLAND	43.1%	ST. CLAIR	16.3%	WASHTENAW	51.3%	WAYNE	21.3%	<p>Monroe County Enrollment in MPUs</p> <table border="1"> <thead> <tr> <th>Year</th> <th>Enrollment</th> </tr> </thead> <tbody> <tr> <td>Fall 2010</td> <td>1,998</td> </tr> <tr> <td>Fall 2015</td> <td>1,790</td> </tr> </tbody> </table>	Year	Enrollment	Fall 2010	1,998	Fall 2015	1,790
Year	Population																													
2010	151,945																													
2015	149,568																													
County	% Population Age 25+ w/ a Bachelor's Degree or higher																													
LIVINGSTON	32.9%																													
MACOMB	22.5%																													
MONROE	18.0%																													
OAKLAND	43.1%																													
ST. CLAIR	16.3%																													
WASHTENAW	51.3%																													
WAYNE	21.3%																													
Year	Enrollment																													
Fall 2010	1,998																													
Fall 2015	1,790																													

Monroe County Community College:

Enrollment at Monroe County Community College	
Fall 2010	4,723
Fall 2015	3,192
% Change	-32.4%
% Point Change in SE MI CC Market Share	-0.5%

Source: www.michigancc.net

MPU Undergraduate (including FTIAC) and Monroe County Community College (MCCC) Headcount



Source: www.michigancc.net

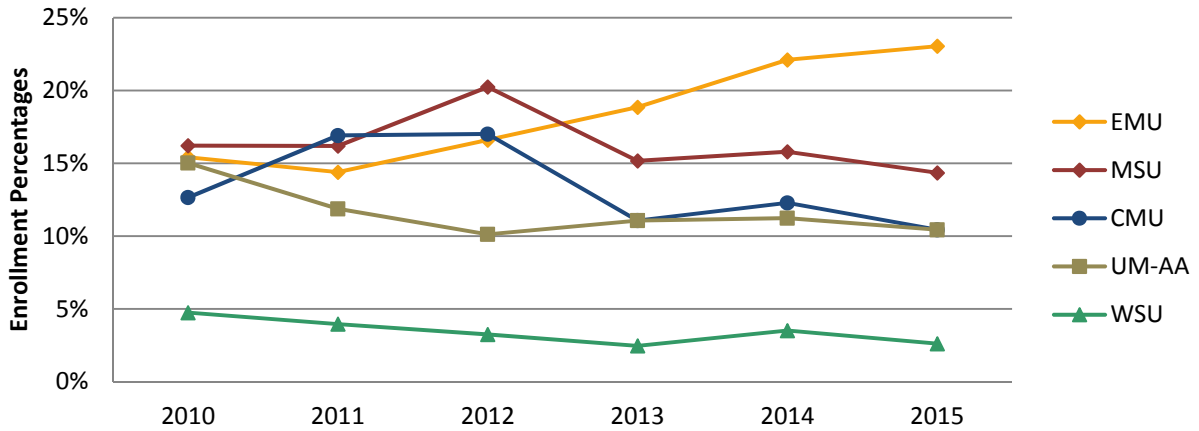
Top five Monroe County Public High Schools by enrollment:

High School Name	City/Township	Fall 2015 Enrollment	Fall 2010 Enrollment	% Change
Monroe High School	Monroe	1,777	2,017	-12%
Bedford Senior High School	Temperance	1,607	1,667	-4%
Airport Senior High School	Carleton	766	931	-18%
Jefferson High School	Monroe	651	709	-8%
Ida High School	Ida	528	535	-1%

Source: *Center for Educational Performance and Information*

Market Share - Top Four Enrollments vs. WSU

Monroe County MPU FTIAC Market Share

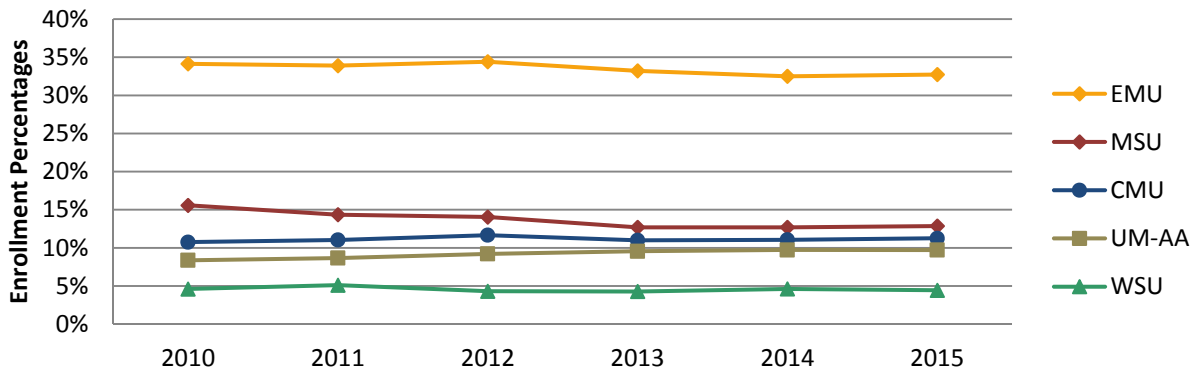


2010 Headcount 253

2015 Headcount 230

- Largest market share gain from 2010 – 2015: Eastern Michigan University 7.6% points
- Largest market share loss from 2010 – 2015: University of Michigan - AA -4.6% points

Monroe County MPU Undergraduate (including FTIAC) Enrollment Market Share

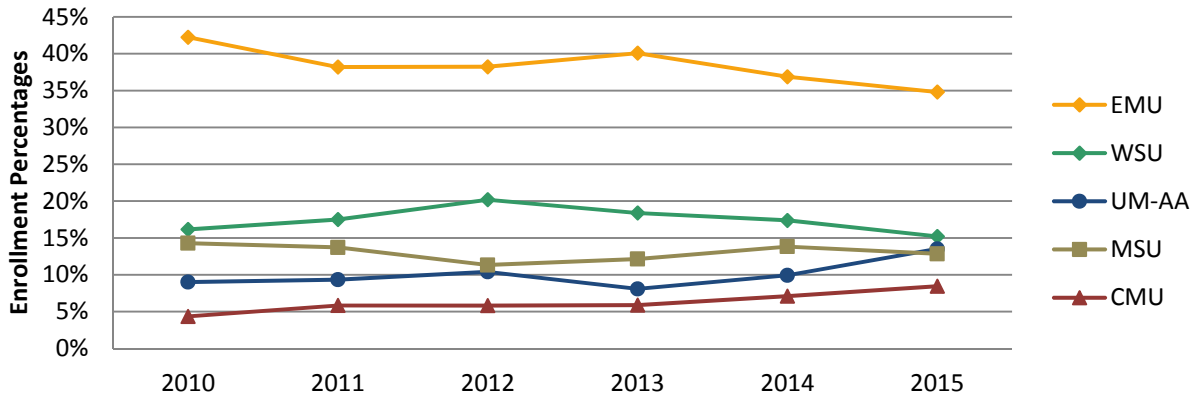


2010 Headcount 1,676

2015 Headcount 1,494

- Largest market share gain from 2010 – 2015: Grand Valley State University 1.8% points
- Largest market share loss from 2010 – 2015: Michigan State University -2.7% points

Monroe County MPU Graduate Enrollment Market Share

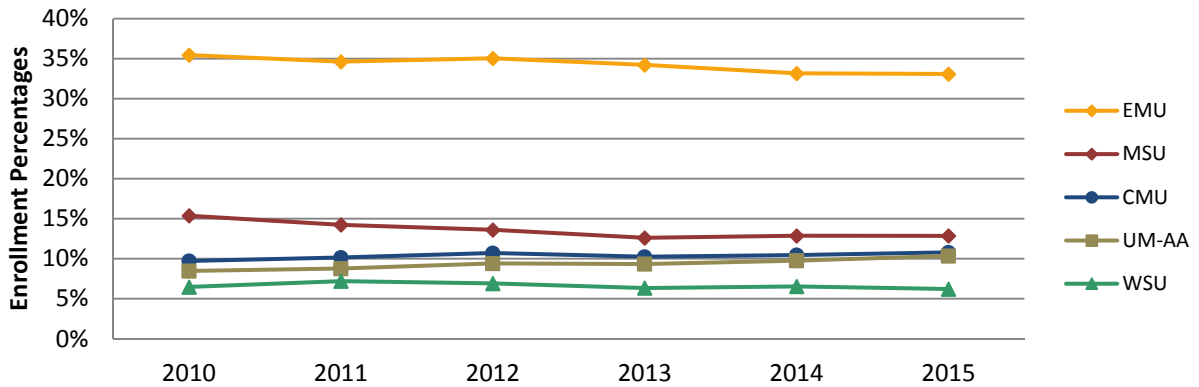


2010 Headcount 322

2015 Headcount 296

- Largest market share gain from 2010 – 2015: University of Michigan - AA 4.5% points
- Largest market share loss from 2010 – 2015: Eastern Michigan University -7.4% points

Monroe County MPU Total Enrollment Market Share

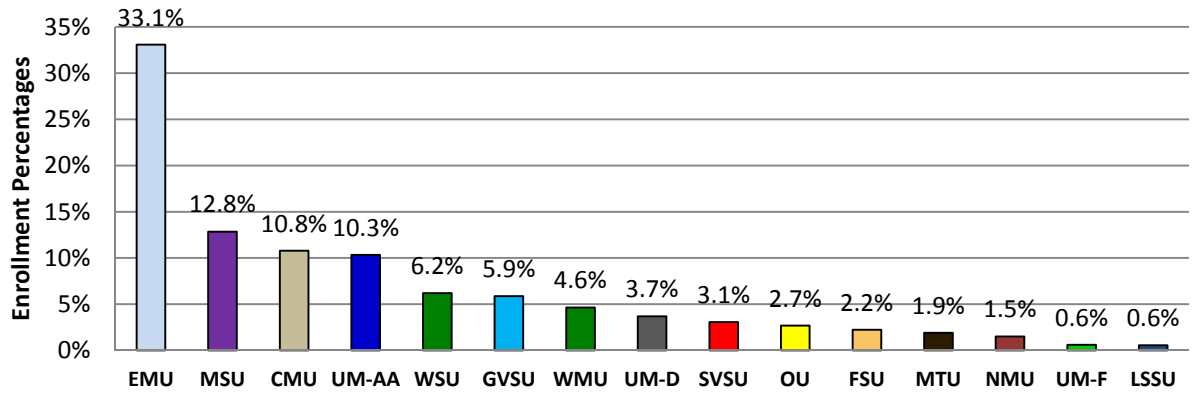


2010 Headcount 1,998

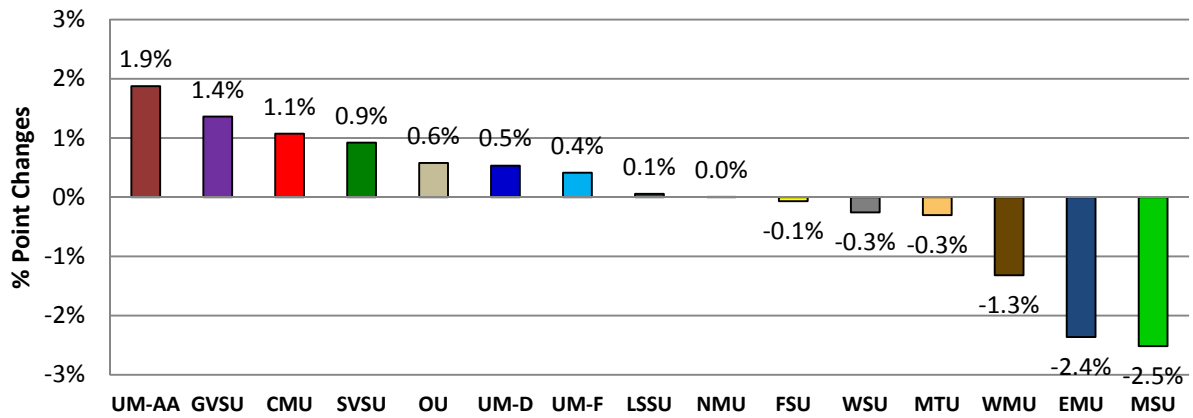
2015 Headcount 1,790

- Largest market share gain from 2010 – 2015: University of Michigan - AA 1.9% points
- Largest market share loss from 2010 – 2015: Michigan State University -2.5% points

Monroe County MPU Total Enrollment Market Share Fall 2015

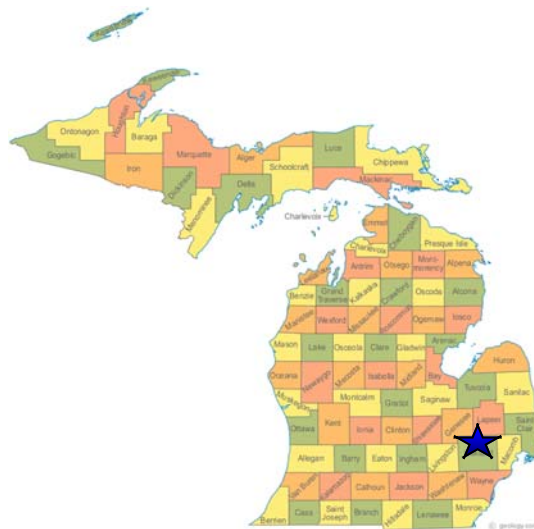


Monroe County MPU Total Enrollment Market Share Change
Fall 2010 - Fall 2015



This page left blank intentionally

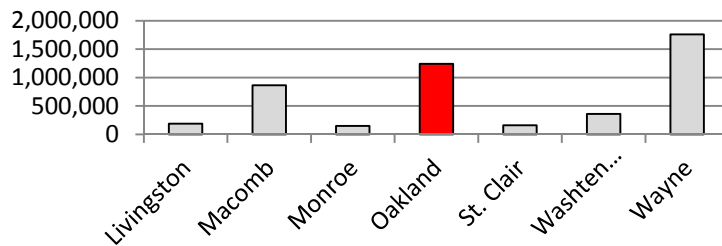
Oakland County



Demographics

The demographics provide the contextual information for the analysis that follows this page. Included in demographics are the total county population and the percent of the population over the age 25 that have a Bachelor’s degree or higher.

2015 U.S. Census Bureau
Population Estimate by County

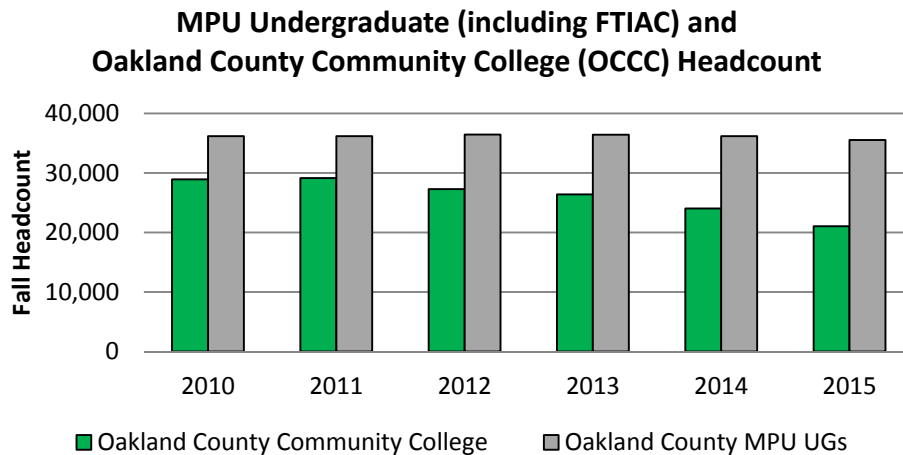


<p>Oakland County Census Population</p> <table border="1"> <thead> <tr> <th>Year</th> <th>Population</th> </tr> </thead> <tbody> <tr> <td>2010</td> <td>1,202,930</td> </tr> <tr> <td>2015</td> <td>1,242,304</td> </tr> </tbody> </table>	Year	Population	2010	1,202,930	2015	1,242,304	<table border="1"> <thead> <tr> <th>County</th> <th>% Population Age 25+ w/ a Bachelor's Degree or higher</th> </tr> </thead> <tbody> <tr> <td>LIVINGSTON</td> <td>32.9%</td> </tr> <tr> <td>MACOMB</td> <td>22.5%</td> </tr> <tr> <td>MONROE</td> <td>18.0%</td> </tr> <tr> <td>OAKLAND</td> <td>43.1%</td> </tr> <tr> <td>ST. CLAIR</td> <td>16.3%</td> </tr> <tr> <td>WASHTENAW</td> <td>51.3%</td> </tr> <tr> <td>WAYNE</td> <td>21.3%</td> </tr> </tbody> </table> <p>Source: U.S. Census Bureau State & County Quick Facts (2014)</p>	County	% Population Age 25+ w/ a Bachelor's Degree or higher	LIVINGSTON	32.9%	MACOMB	22.5%	MONROE	18.0%	OAKLAND	43.1%	ST. CLAIR	16.3%	WASHTENAW	51.3%	WAYNE	21.3%	<p>Oakland County Enrollment in MPUs</p> <table border="1"> <thead> <tr> <th>Year</th> <th>Enrollment</th> </tr> </thead> <tbody> <tr> <td>Fall 2010</td> <td>44,394</td> </tr> <tr> <td>Fall 2015</td> <td>43,055</td> </tr> </tbody> </table>	Year	Enrollment	Fall 2010	44,394	Fall 2015	43,055
Year	Population																													
2010	1,202,930																													
2015	1,242,304																													
County	% Population Age 25+ w/ a Bachelor's Degree or higher																													
LIVINGSTON	32.9%																													
MACOMB	22.5%																													
MONROE	18.0%																													
OAKLAND	43.1%																													
ST. CLAIR	16.3%																													
WASHTENAW	51.3%																													
WAYNE	21.3%																													
Year	Enrollment																													
Fall 2010	44,394																													
Fall 2015	43,055																													

Oakland County Community College:

Enrollment at Oakland County Community College	
Fall 2010	28,939
Fall 2015	21,061
% Change	-27.2%
% Point Change in SE MI CC Market Share	-1.8%

Source: www.michigancc.net



Source: www.michigancc.net

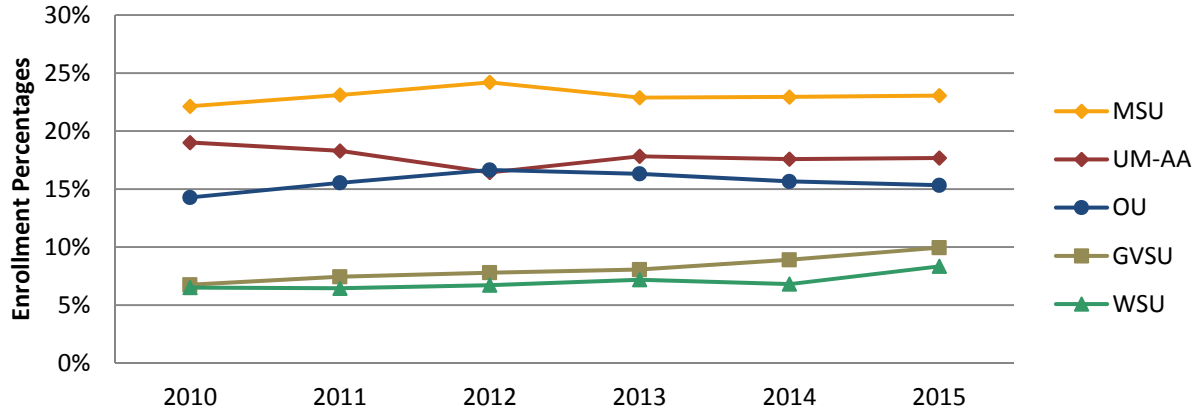
Top five Oakland County Public High Schools by enrollment:

High School Name	City/Township	Fall 2015 Enrollment	Fall 2010 Enrollment	% Change
Lake Orion Community High School	Lake Orion	2,311	2,521	-8%
Novi High School	Novi	2,060	2,018	2%
Troy High School	Troy	1,980	2,042	-3%
Clarkston High School	Clarkston	1,877	1,906	-2%
Walled Lake Central High School	Commerce Township	1,749	1,834	-5%

Source: *Center for Educational Performance and Information*

Market Share - Top Four Enrollments vs. WSU

Oakland County MPU FTIAC Market Share

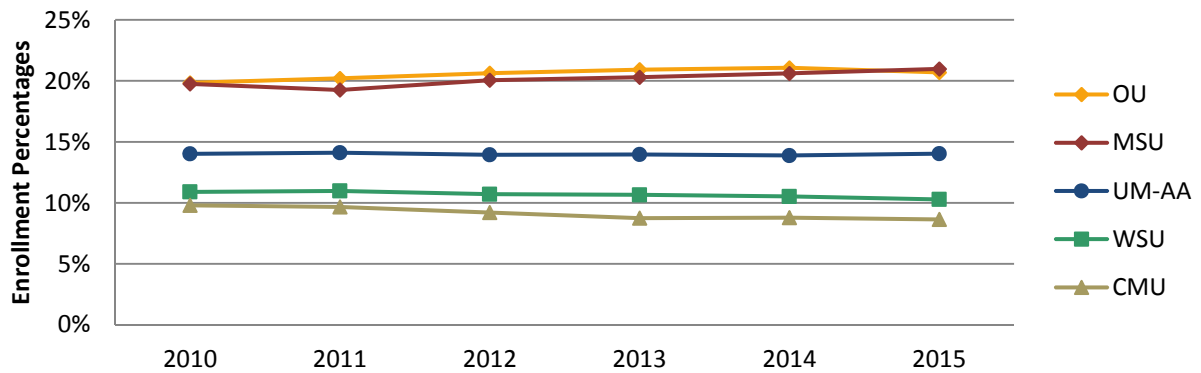


2010 Headcount 6,613

2015 Headcount 6,424

- Largest market share gain from 2010 – 2015: Grand Valley State University 3.2% points
- Largest market share loss from 2010 – 2015: Central Michigan University -2.3% points

Oakland County MPU Undergraduate (including FTIAC) Enrollment Market Share

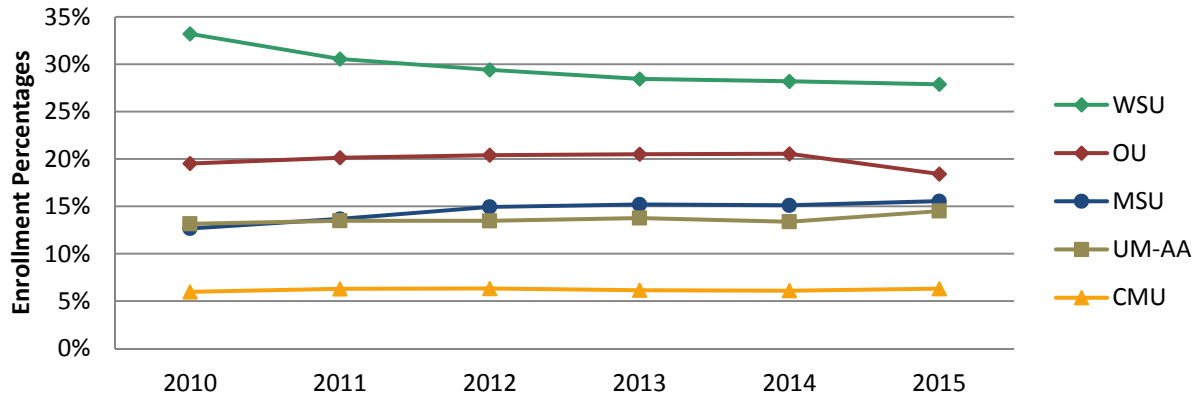


2010 Headcount 36,182

2015 Headcount 35,533

- Largest market share gain from 2010 – 2015: Grand Valley State University 1.7% points
- Largest market share loss from 2010 – 2015: Central Michigan University -1.2% points

Oakland County MPU Graduate Enrollment Market Share

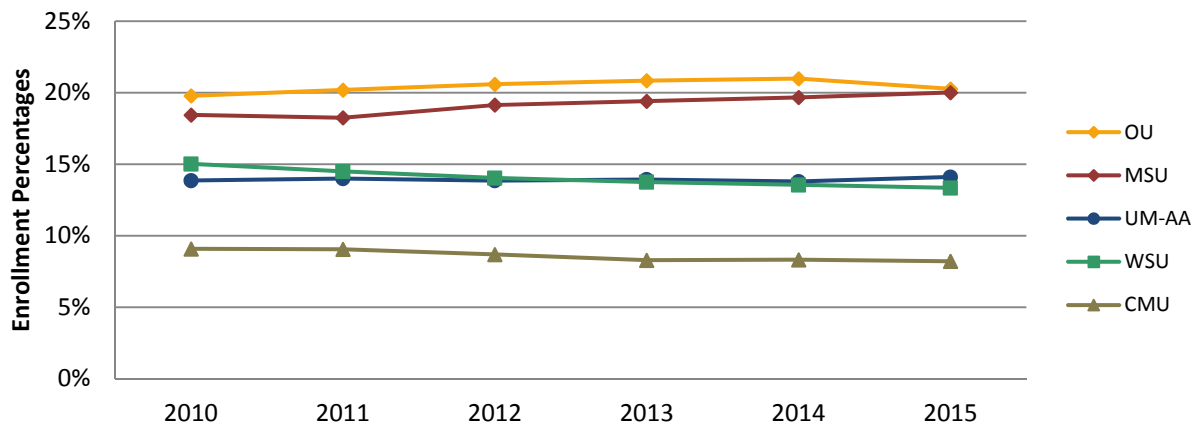


2010 Headcount 8,212

2015 Headcount 7,522

- Largest market share gain from 2010 – 2015: Michigan State University 2.9% points
- Largest market share loss from 2010 – 2015: Wayne State University -5.3% points

Oakland County MPU Total Enrollment Market Share

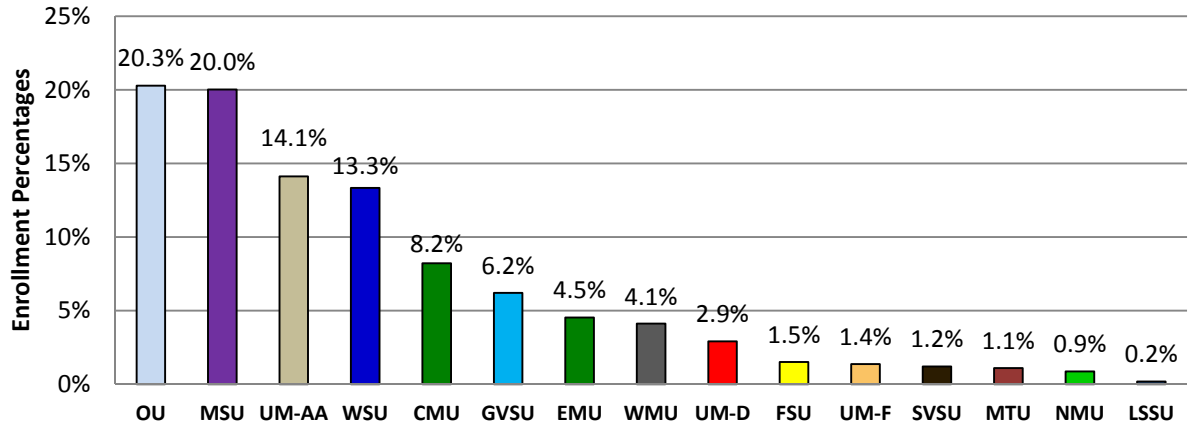


2010 Headcount 44,394

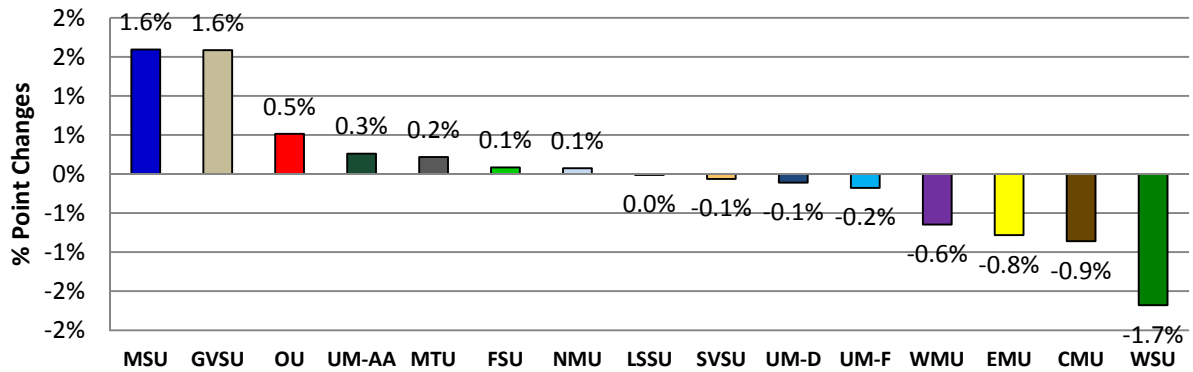
2015 Headcount 43,055

- Largest market share gain from 2010 – 2015: Grand Valley State University 1.6% points
- Largest market share loss from 2010 – 2015: Wayne State University -1.7% points

Oakland County MPU Total Enrollment Market Share Fall 2015

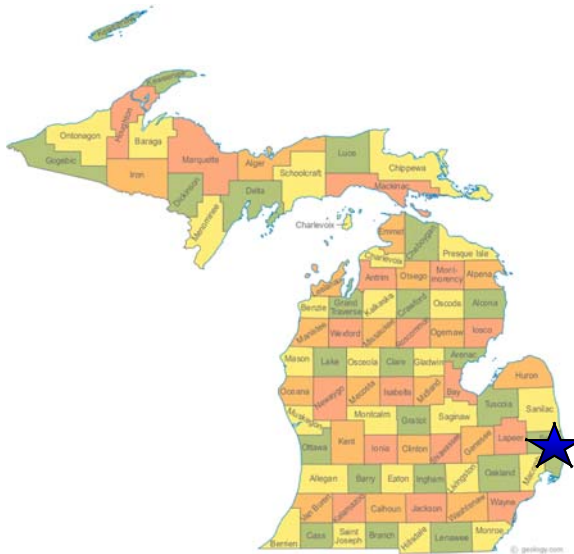


Oakland County MPU Total Enrollment Market Share Change
Fall 2010 - Fall 2015



This page left blank intentionally

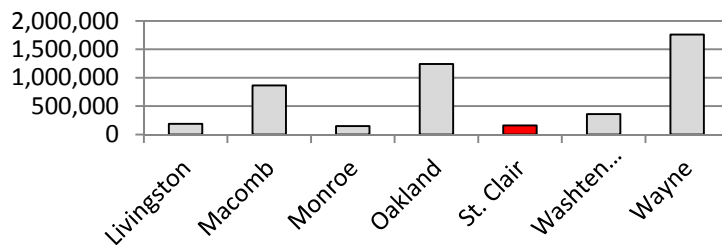
St. Clair County



Demographics

The demographics provide the contextual information for the analysis that follows this page. Included in demographics are the total county population and the percent of the population over the age 25 that have a Bachelor's degree or higher.

2015 U.S. Census Bureau
Population Estimate by County



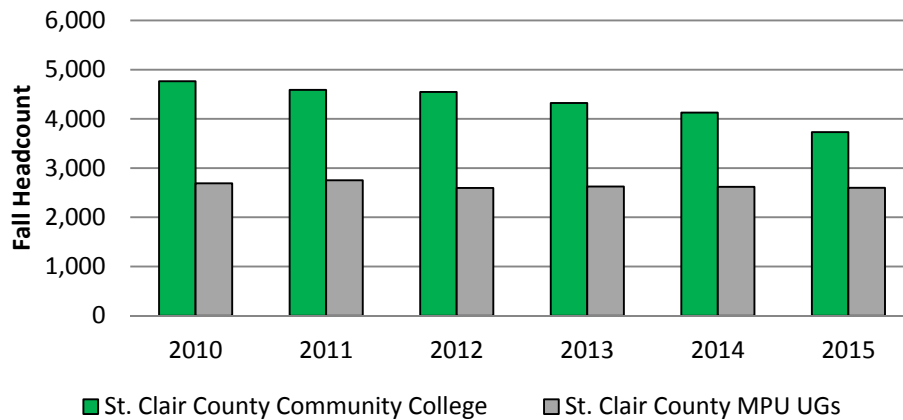
<p>St. Clair County Census Population</p> <table border="1"> <thead> <tr> <th>Year</th> <th>Population</th> </tr> </thead> <tbody> <tr> <td>2010</td> <td>162,681</td> </tr> <tr> <td>2015</td> <td>159,875</td> </tr> </tbody> </table>	Year	Population	2010	162,681	2015	159,875	<table border="1"> <thead> <tr> <th>County</th> <th>% Population Age 25+ w/ a Bachelor's Degree or higher</th> </tr> </thead> <tbody> <tr> <td>LIVINGSTON</td> <td>32.9%</td> </tr> <tr> <td>MACOMB</td> <td>22.5%</td> </tr> <tr> <td>MONROE</td> <td>18.0%</td> </tr> <tr> <td>OAKLAND</td> <td>43.1%</td> </tr> <tr> <td>ST. CLAIR</td> <td>16.3%</td> </tr> <tr> <td>WASHTENAW</td> <td>51.3%</td> </tr> <tr> <td>WAYNE</td> <td>21.3%</td> </tr> </tbody> </table> <p>Source: U.S. Census Bureau State & County Quick Facts (2014)</p>	County	% Population Age 25+ w/ a Bachelor's Degree or higher	LIVINGSTON	32.9%	MACOMB	22.5%	MONROE	18.0%	OAKLAND	43.1%	ST. CLAIR	16.3%	WASHTENAW	51.3%	WAYNE	21.3%	<p>St. Clair County Enrollment in MPUs</p> <table border="1"> <thead> <tr> <th>Year</th> <th>Enrollment</th> </tr> </thead> <tbody> <tr> <td>Fall 2010</td> <td>3,151</td> </tr> <tr> <td>Fall 2015</td> <td>2,957</td> </tr> </tbody> </table>	Year	Enrollment	Fall 2010	3,151	Fall 2015	2,957
Year	Population																													
2010	162,681																													
2015	159,875																													
County	% Population Age 25+ w/ a Bachelor's Degree or higher																													
LIVINGSTON	32.9%																													
MACOMB	22.5%																													
MONROE	18.0%																													
OAKLAND	43.1%																													
ST. CLAIR	16.3%																													
WASHTENAW	51.3%																													
WAYNE	21.3%																													
Year	Enrollment																													
Fall 2010	3,151																													
Fall 2015	2,957																													

St. Clair County Community College:

Enrollment at St. Clair County Community College	
Fall 2010	4,765
Fall 2015	3,730
% Change	-21.7%
% Point Change in SE MI CC Market Share	0.0%

Source: www.michigancc.net

MPU Undergraduate (including FTIAC) and St. Clair County Community College (SCCC) Headcount



Source: www.michigancc.net

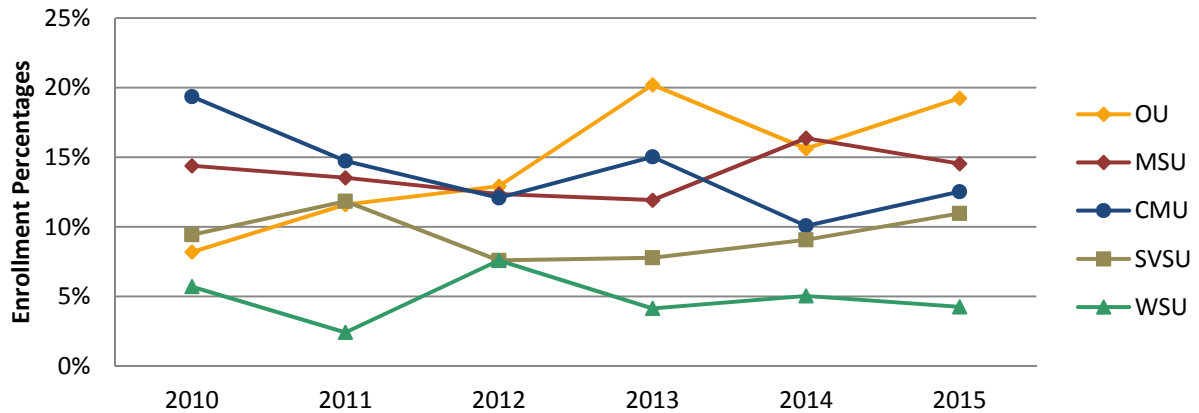
Top five St. Clair County Public High Schools by enrollment:

High School Name	City/Township	Fall 2015 Enrollment	Fall 2010 Enrollment	% Change
Port Huron High School	Port Huron	1,393	1,540	-10%
Port Huron Northern High School	Port Huron	1,265	1,390	-9%
St. Clair High School	St. Clair	805	972	-17%
Marysville High School	Marysville	798	828	-4%
Algonac Junior/Senior High School	Algonac	516	663	-22%

Note: Algonac Junior/Senior High School's Fall 2015 Enrollment excludes students in grades 7 and 8.
Source: Center for Educational Performance and Information

Market Share - Top Four Enrollments vs. WSU

St. Clair County MPU FTIAC Market Share

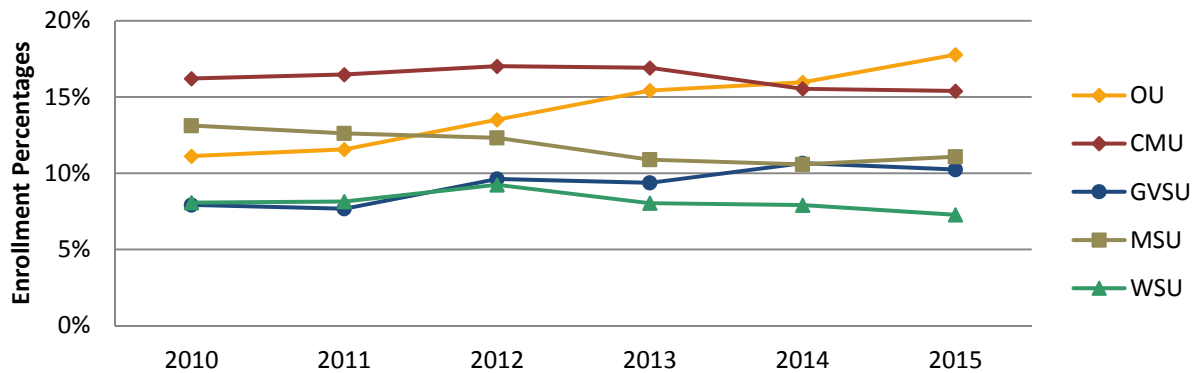


2010 Headcount 403

2015 Headcount 447

- Largest market share gain from 2010 – 2015: Oakland University 11.1% points
- Largest market share loss from 2010 – 2015: Central Michigan University -6.8% points

St. Clair County MPU Undergraduate (including FTIAC) Enrollment Market Share

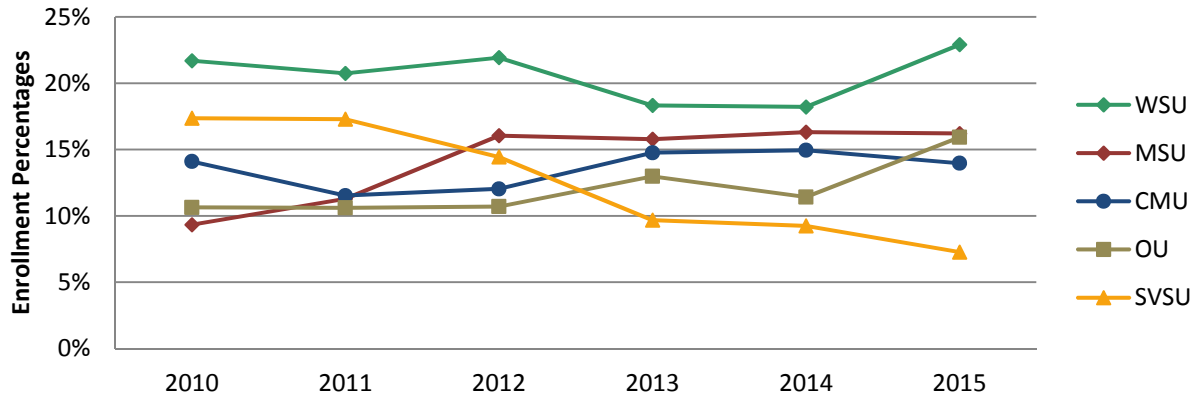


2010 Headcount 2,690

2015 Headcount 2,599

- Largest market share gain from 2010 – 2015: Oakland University 6.7% points
- Largest market share loss from 2010 – 2015: Eastern Michigan University -2.3% points

St. Clair County MPU Graduate Enrollment Market Share

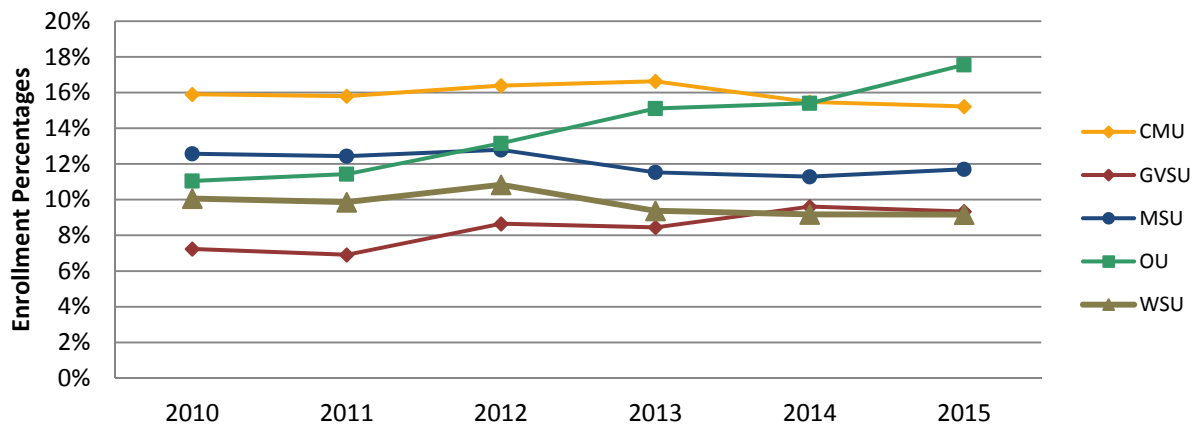


2010 Headcount 461

2015 Headcount 358

- Largest market share gain from 2010 – 2015: Michigan State University 6.9% points
- Largest market share loss from 2010 – 2015: Saginaw Valley State University -10.1% points

St. Clair County MPU Total Enrollment Market Share

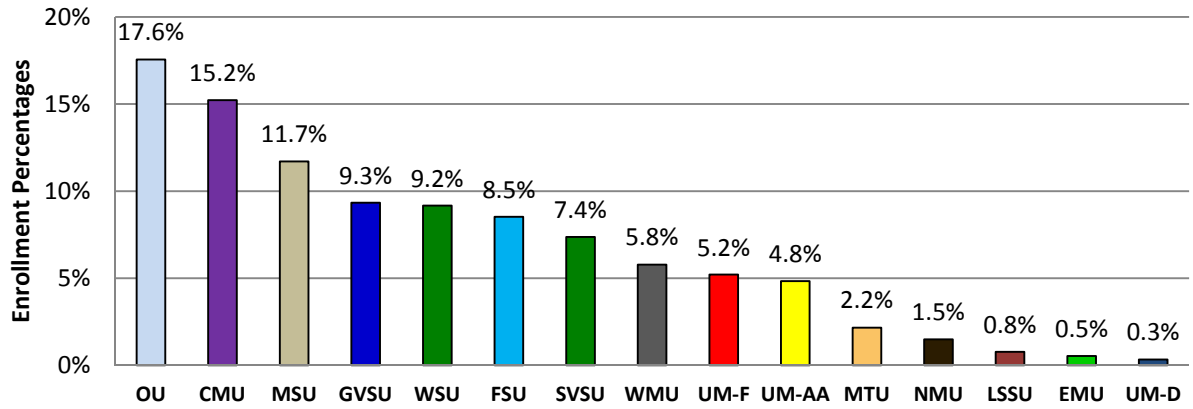


2010 Headcount 3,151

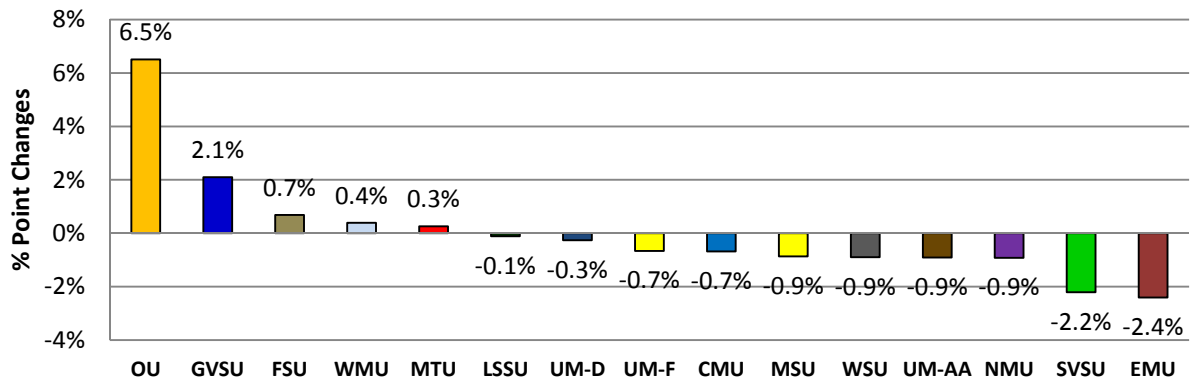
2015 Headcount 2,957

- Largest market share gain from 2010 – 2015: Oakland University 6.5% points
- Largest market share loss from 2010 – 2015: Eastern Michigan University -2.4% points

St. Clair County MPU Total Enrollment Market Share Fall 2015

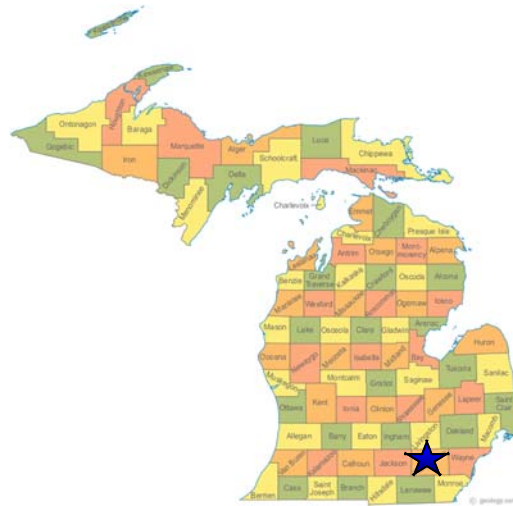


St. Clair County MPU Total Enrollment Market Share Change
Fall 2010 - Fall 2015



This page left blank intentionally

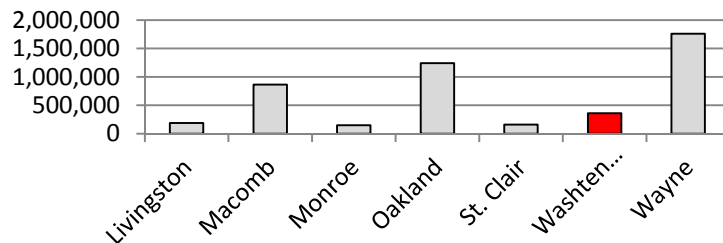
Washtenaw County



Demographics

The demographics provide the contextual information for the analysis that follows this page. Included in demographics are the total county population and the percent of the population over the age 25 that have a Bachelor’s degree or higher.

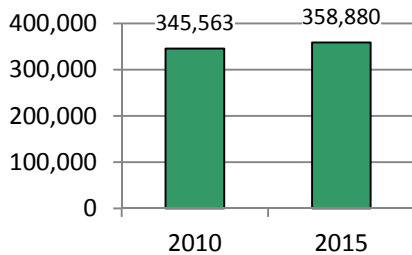
2015 U.S. Census Bureau
Population Estimate by County



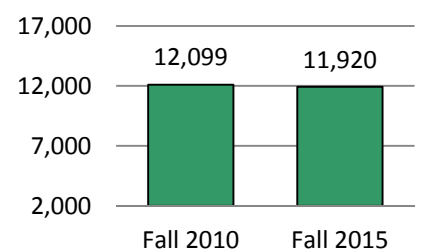
County	% Population Age 25+ w/ a Bachelor's Degree or higher
LIVINGSTON	32.9%
MACOMB	22.5%
MONROE	18.0%
OAKLAND	43.1%
ST. CLAIR	16.3%
WASHTENAW	51.3%
WAYNE	21.3%

Source: U.S. Census Bureau State & County Quick Facts (2014)

Washtenaw County
Census Population



Washtenaw County
Enrollment in MPUs

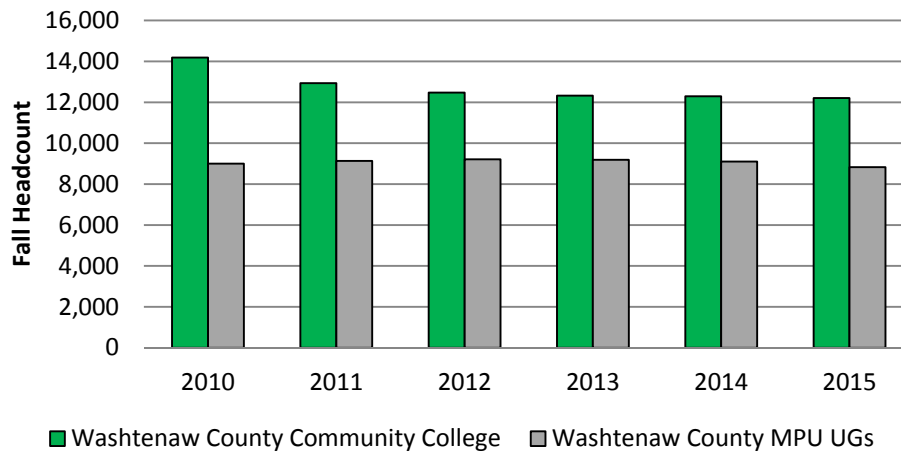


Washtenaw Community College:

Enrollment at Washtenaw County Community College	
Fall 2010	14,189
Fall 2015	12,211
% Change	-13.9%
% Point Change in SE MI CC Market Share	0.9%

Source: www.michigancc.net

MPU Undergraduate (including FTIAC) and Washtenaw County Community College Headcount



Source: www.michigancc.net

Top five Washtenaw County Public High Schools by enrollment:

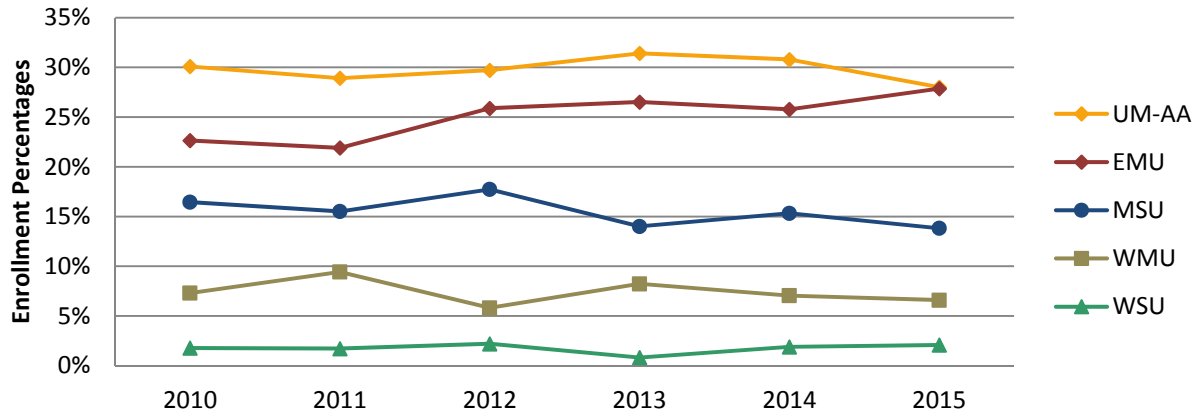
High School Name	City/Township	Fall 2015 Enrollment	Fall 2010 Enrollment	% Change
Saline High School	Saline	1,810	1,805	0%
Pioneer High School	Ann Arbor	1,747	1,909	-8%
Huron High School	Ann Arbor	1,497	1,631	-8%
Skyline High School	Ann Arbor	1,467	1,226	20%
Lincoln Senior High School	Ypsilanti	1,157	1,427	-19%

Source: *Center for Educational Performance and Information*

*Opened in fall 2008.

Market Share - Top Four Enrollments vs. WSU

Washtenaw County MPU FTIAC Market Share

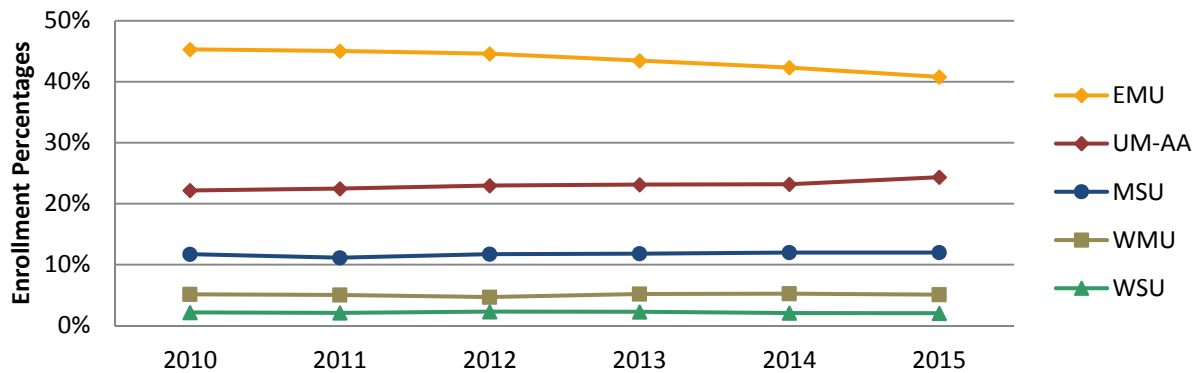


2010 Headcount 1,356

2015 Headcount 1,396

- Largest market share gain from 2010 – 2015: Eastern Michigan University 5.2% points
- Largest market share loss from 2010 – 2015: Michigan State University -2.6% points

Washtenaw County MPU Undergraduate (including FTIAC) Enrollment Market Share

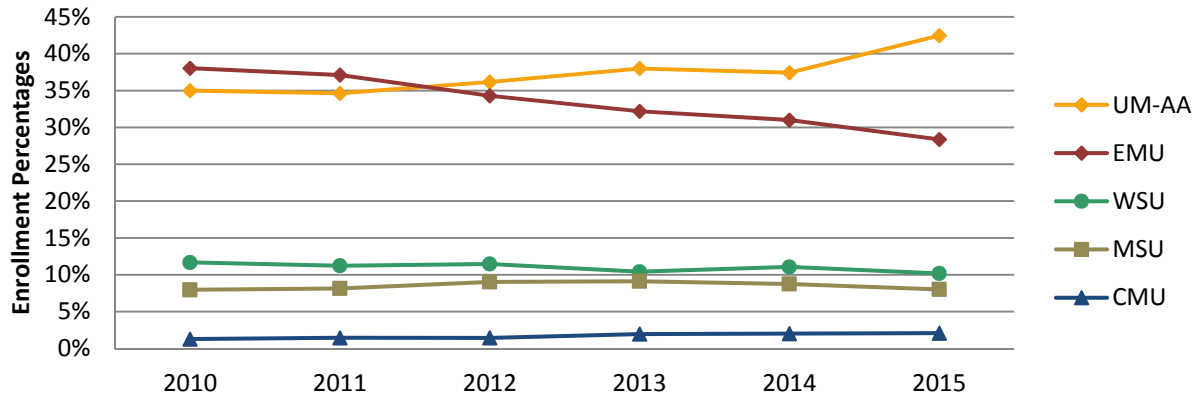


2010 Headcount 9,004

2015 Headcount 8,825

- Largest market share gain from 2010 – 2015: University of Michigan - AA 2.2% points
- Largest market share loss from 2010 – 2015: Eastern Michigan University -4.5% points

Washtenaw County MPU Graduate Enrollment Market Share

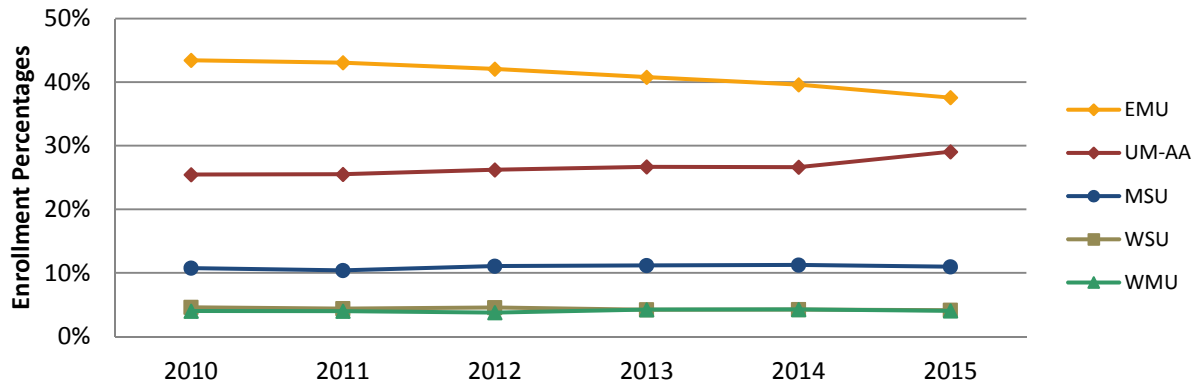


2010 Headcount 3,095

2015 Headcount 3,095

- Largest market share gain from 2010 – 2015: University of Michigan - AA 7.5% points
- Largest market share loss from 2010 – 2015: Eastern Michigan University -9.7% points

Washtenaw County MPU Total Enrollment Market Share

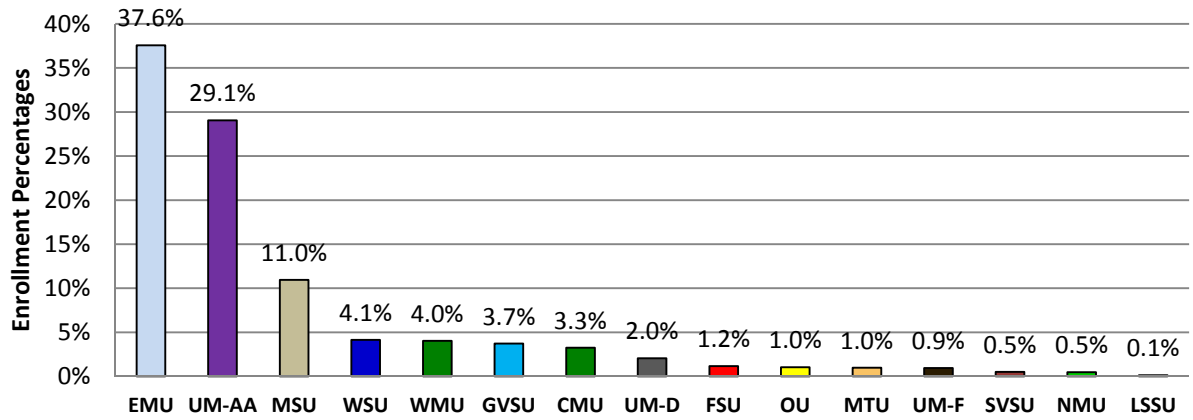


2010 Headcount 12,099

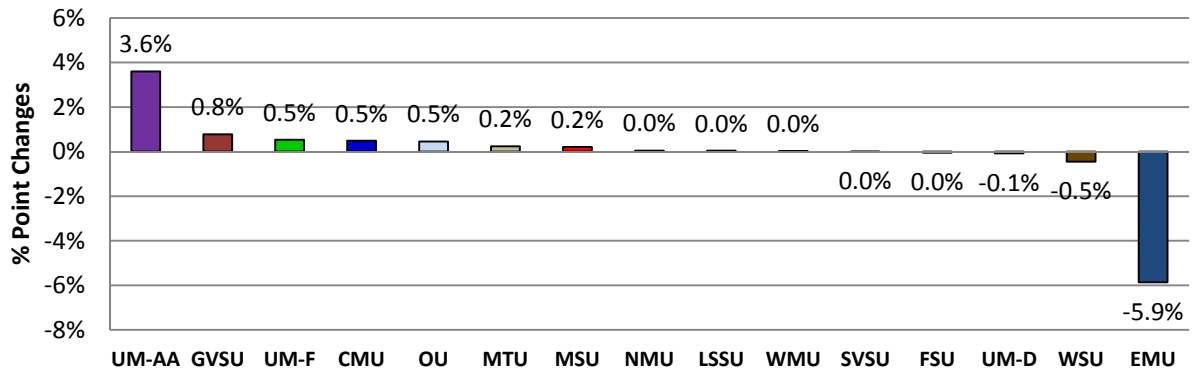
2015 Headcount 11,920

- Largest market share gain from 2010 – 2015: University of Michigan - AA 3.6% points
- Largest market share loss from 2010 – 2015: Eastern Michigan University -5.9% points

Washtenaw County MPU Total Enrollment Market Share Fall 2015

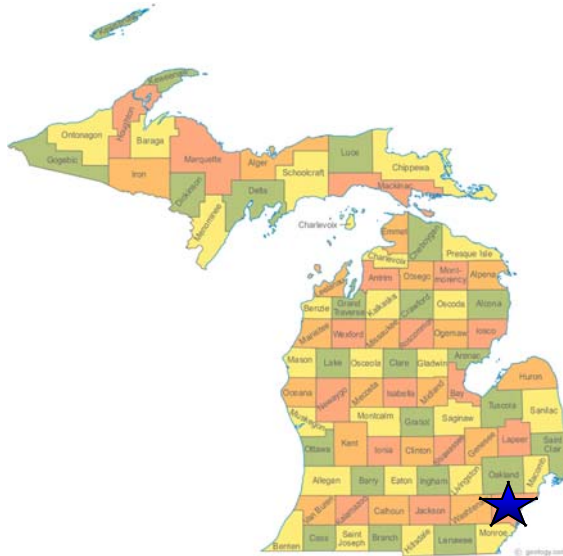


Washtenaw County MPU Total Enrollment Market Share Change
Fall 2010 - Fall 2015



This page left blank intentionally

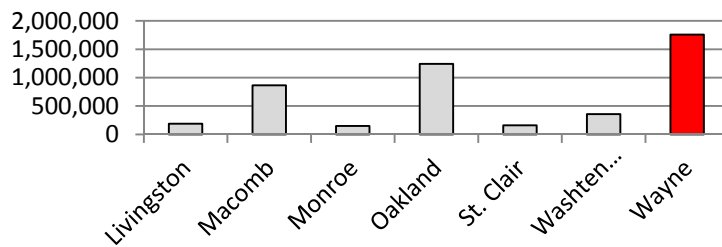
Wayne County



Demographics

The demographics provide the contextual information for the analysis that follows this page. Included in demographics are the total county population and the percent of the population over the age 25 that have a Bachelor’s degree or higher.

**2015 U.S. Census Bureau
Population Estimate by County**



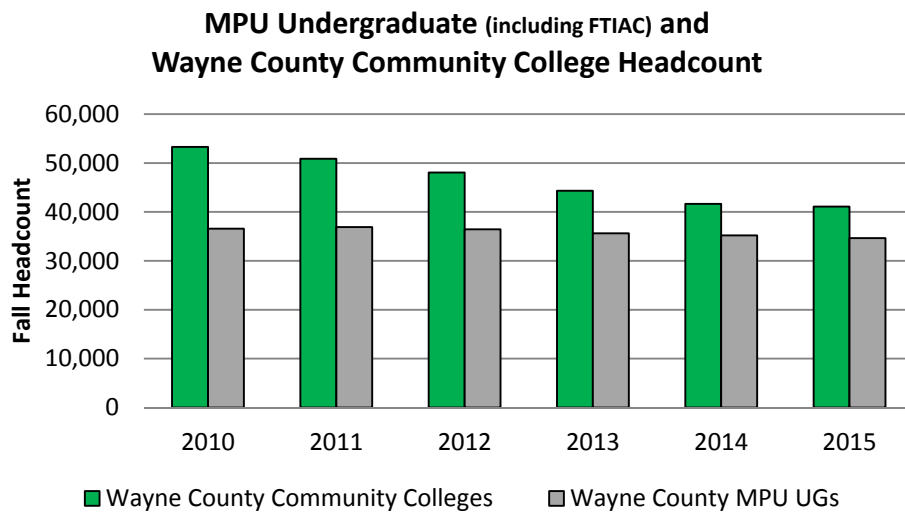
<p>Wayne County Census Population</p> <table border="1"> <thead> <tr> <th>Year</th> <th>Population</th> </tr> </thead> <tbody> <tr> <td>2010</td> <td>1,815,199</td> </tr> <tr> <td>2015</td> <td>1,759,335</td> </tr> </tbody> </table>	Year	Population	2010	1,815,199	2015	1,759,335	<table border="1"> <thead> <tr> <th>County</th> <th>% Population Age 25+ w/ a Bachelor's Degree or higher</th> </tr> </thead> <tbody> <tr> <td>LIVINGSTON</td> <td>32.9%</td> </tr> <tr> <td>MACOMB</td> <td>22.5%</td> </tr> <tr> <td>MONROE</td> <td>18.0%</td> </tr> <tr> <td>OAKLAND</td> <td>43.1%</td> </tr> <tr> <td>ST. CLAIR</td> <td>16.3%</td> </tr> <tr> <td>WASHTENAW</td> <td>51.3%</td> </tr> <tr> <td>WAYNE</td> <td>21.3%</td> </tr> </tbody> </table> <p>Source: U.S. Census Bureau State & County Quick Facts (2014)</p>	County	% Population Age 25+ w/ a Bachelor's Degree or higher	LIVINGSTON	32.9%	MACOMB	22.5%	MONROE	18.0%	OAKLAND	43.1%	ST. CLAIR	16.3%	WASHTENAW	51.3%	WAYNE	21.3%	<p>Wayne County Enrollment in MPUs</p> <table border="1"> <thead> <tr> <th>Year</th> <th>Enrollment</th> </tr> </thead> <tbody> <tr> <td>Fall 2010</td> <td>44,169</td> </tr> <tr> <td>Fall 2015</td> <td>41,309</td> </tr> </tbody> </table>	Year	Enrollment	Fall 2010	44,169	Fall 2015	41,309
Year	Population																													
2010	1,815,199																													
2015	1,759,335																													
County	% Population Age 25+ w/ a Bachelor's Degree or higher																													
LIVINGSTON	32.9%																													
MACOMB	22.5%																													
MONROE	18.0%																													
OAKLAND	43.1%																													
ST. CLAIR	16.3%																													
WASHTENAW	51.3%																													
WAYNE	21.3%																													
Year	Enrollment																													
Fall 2010	44,169																													
Fall 2015	41,309																													

Wayne County Community Colleges:

Includes Wayne County Community College, Schoolcraft College, and Henry Ford Community College

Enrollment at Wayne County Community Colleges	
Fall 2010	53,302
Fall 2015	41,096
% Change	-22.9%
% Point Change in SE MI CC Market Share	-1.2%

Source: www.michigancc.net



Source: www.michigancc.net

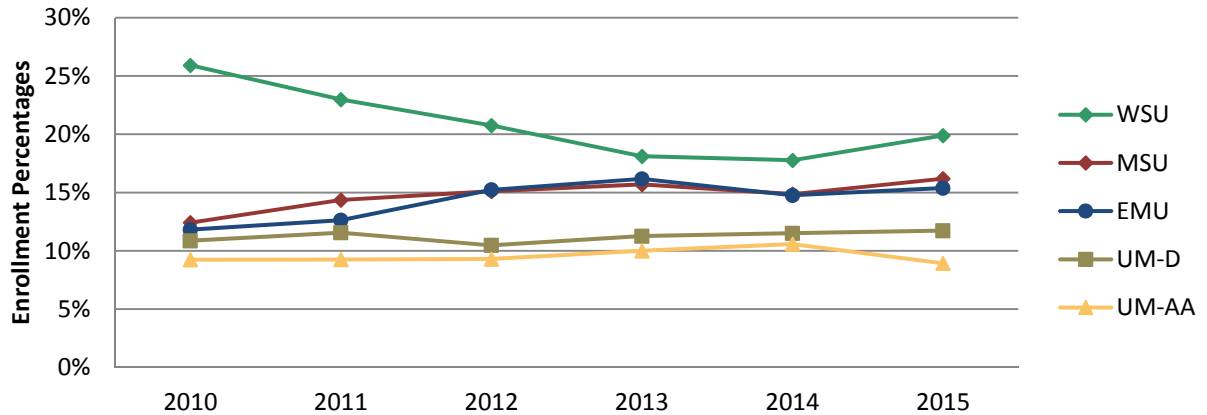
Top five Wayne County Public High Schools by enrollment:

High School Name	City/Township	Fall 2015 Enrollment	Fall 2010 Enrollment	% Change
Fordson High School	Dearborn	2,462	2,356	4%
Cass Technical High School	Detroit	2,370	2,138	11%
Northville High School	Northville	2,322	2,234	4%
Plymouth High School	Plymouth	2,077	2,094	-1%
Salem High School	Salem	2,059	2,073	-1%

Source: *Center for Educational Performance and Information*

Market Share - Top Four Enrollments vs. WSU

Wayne County MPU FTIAC Market Share

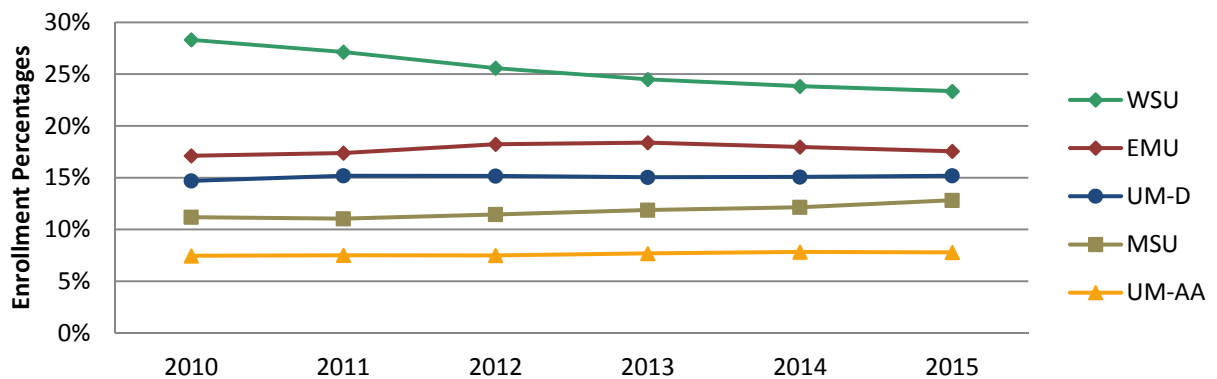


2010 Headcount 6,248

2015 Headcount 6,134

- Largest market share gain from 2010 – 2015: Michigan State University 3.4% points
- Largest market share loss from 2010 – 2015: Wayne State University -3.7% points

Wayne County MPU Undergraduate (including FTIAC) Enrollment Market Share

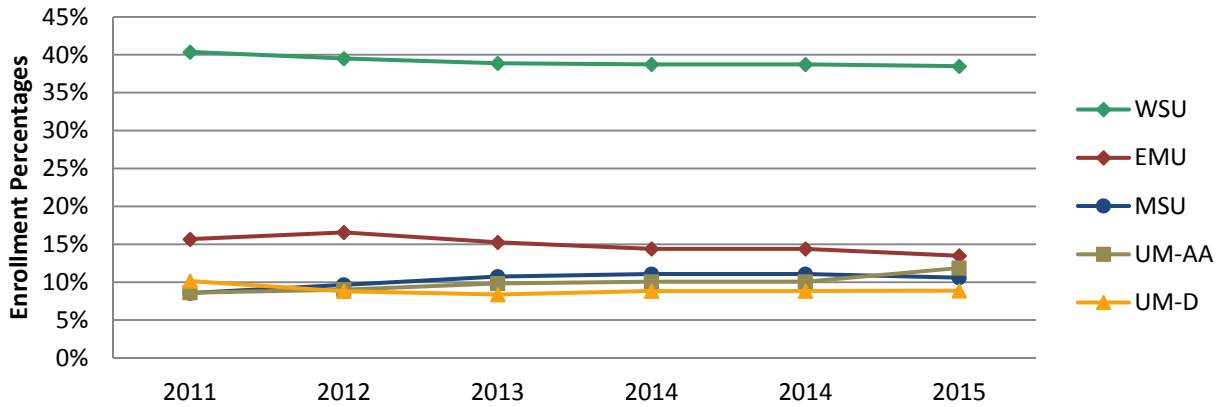


2010 Headcount 36,559

2015 Headcount 34,647

- Largest market share gain from 2010 – 2015: Michigan State University 1.6% points
- Largest market share loss from 2010 – 2015: Wayne State University -5.0% points

Wayne County MPU Graduate Enrollment Market Share

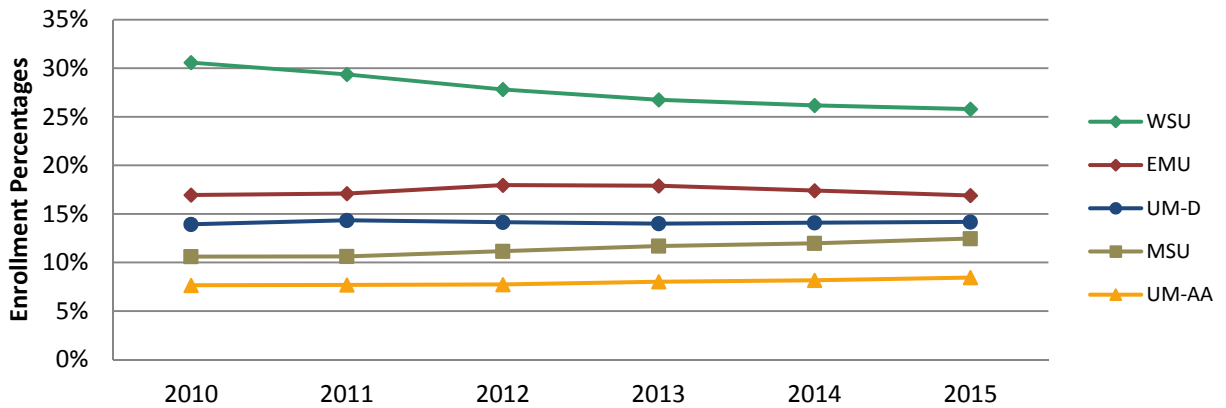


2010 Headcount 7,610

2015 Headcount 6,662

- Largest market share gain from 2010 – 2015: University of Michigan - AA 3.3% points
- Largest market share loss from 2010 – 2015: Wayne State University -3.0% points

Wayne County MPU Total Enrollment Market Share

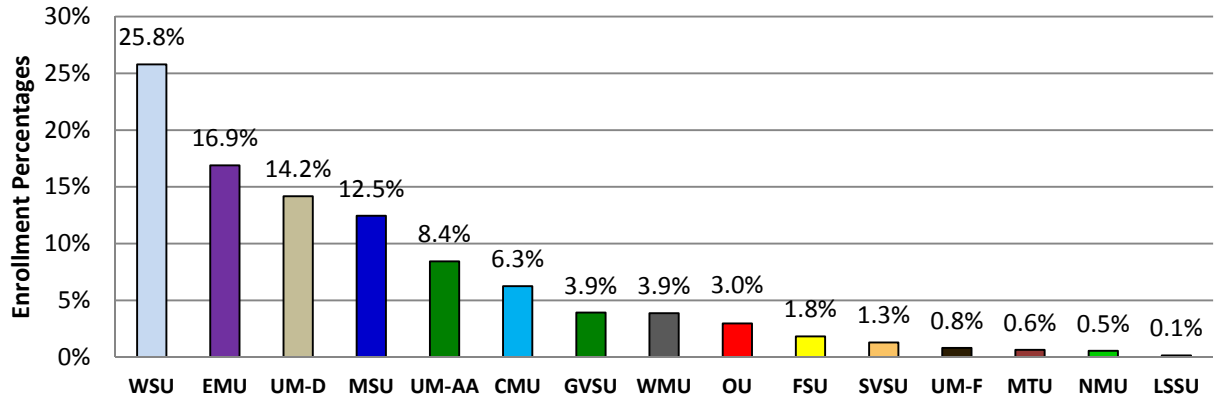


2010 Headcount 44,169

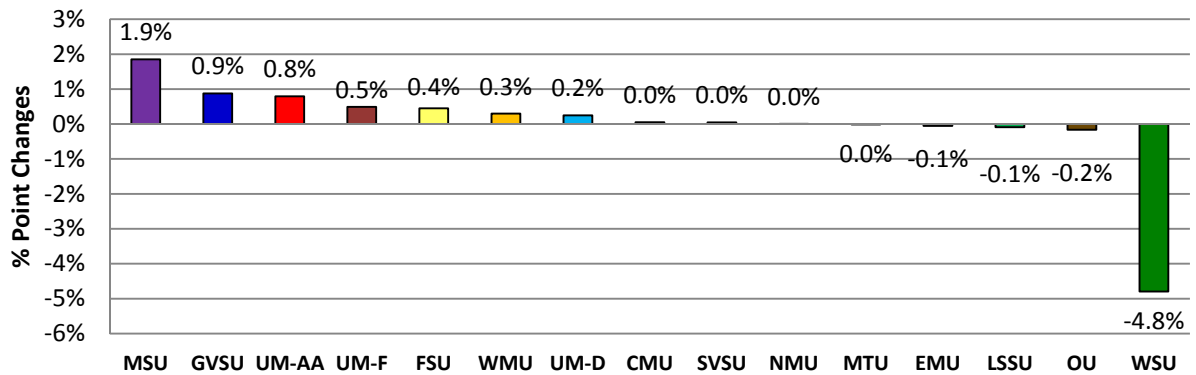
2015 Headcount 41,309

- Largest market share gain from 2010 – 2015: Michigan State University 1.9% points
- Largest market share loss from 2010 – 2015: Wayne State University -4.8% points

Wayne County MPU Total Enrollment Market Share Fall 2015



Wayne County MPU Total Enrollment Market Share Change
Fall 2010 - Fall 2015



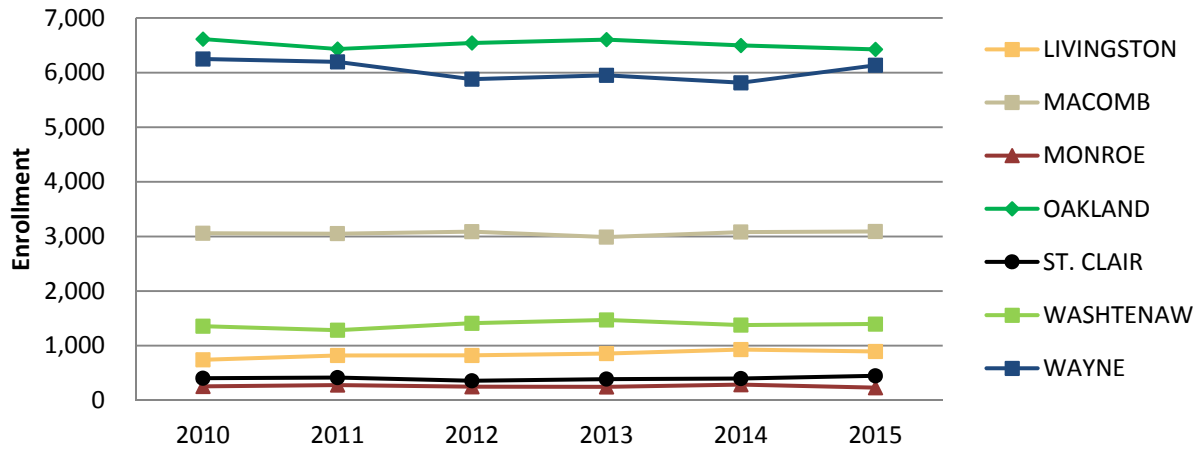
This page left blank intentionally

MPU Enrollment Comparison

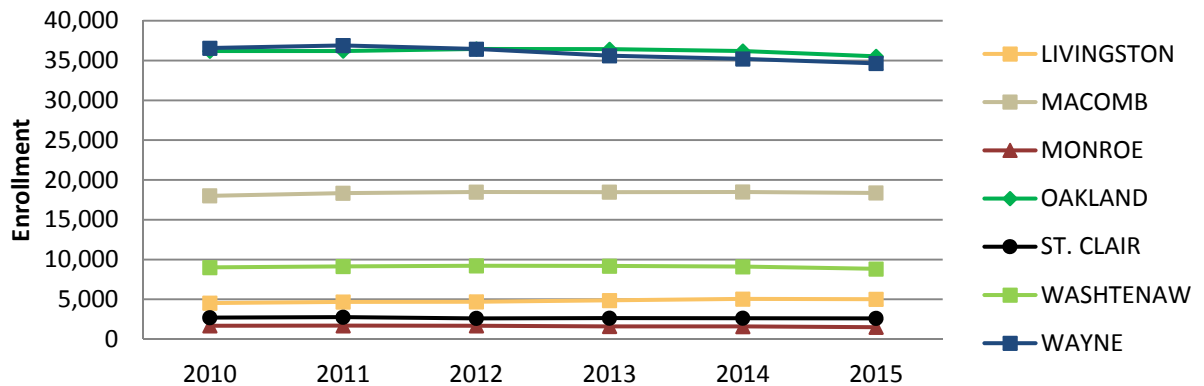
MPU enrollment comparison of 7 county area: Livingston, Macomb, Monroe, Oakland, St. Clair, Washtenaw and Wayne Counties, Fall 2010 to Fall 2015.

The following section shows how the counties rank in enrollments at the MPUs. Wayne, Oakland, and Macomb dominate the enrollments as they are the most populous counties of Southeastern Michigan. The charts provide information to compare the seven county totals of undergraduate, graduate, and total enrollments.

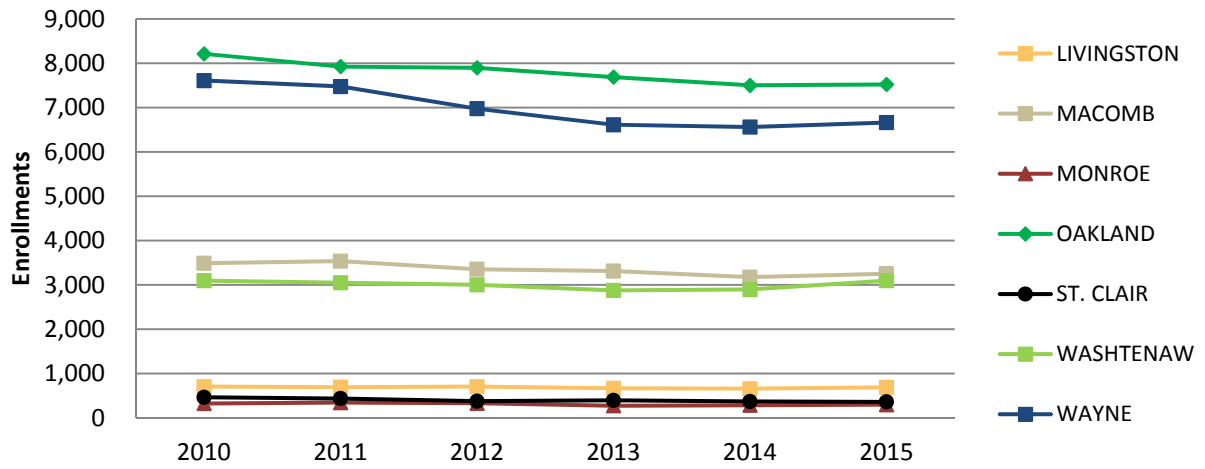
FTIAC Enrollment Comparison
Seven County Area



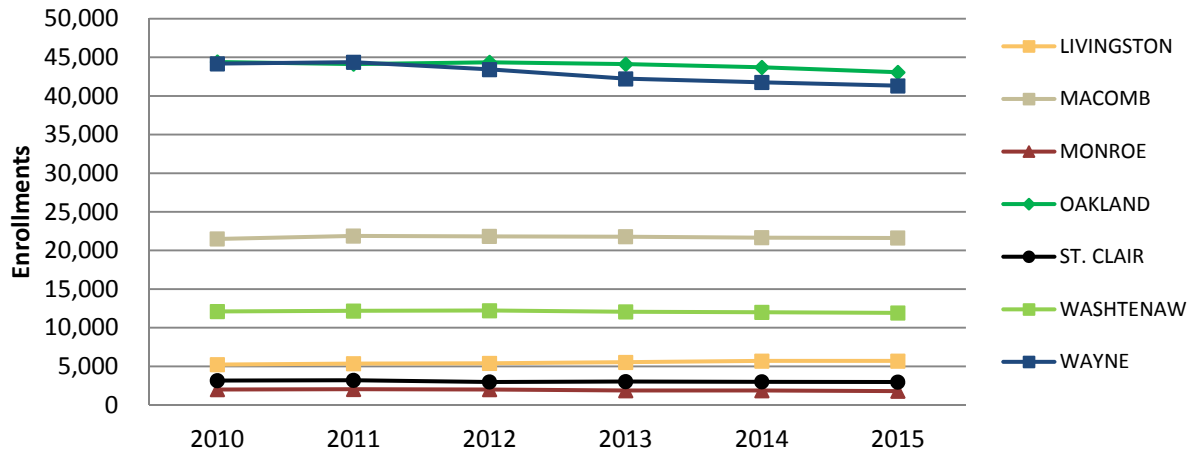
Undergraduate (including FTIAC) Enrollment Comparison
Seven County Area



Graduate Enrollment Comparison Seven County Area



Total Enrollment Comparison Seven County Area



This page left blank intentionally

Appendix A– Data Tables

The data appendix is a useful tool that can be used to find enrollment figures and market shares. Appendix A details the market shares of Wayne State and the top four MPUs in terms of Fall 2014 market share by county for FTIACs, undergraduates, graduates, and total enrollments. The tables also display what percent of the market is covered by the remaining MPUs. Total enrollment counts by county are also included in that section. The next section summarizes the last column of each table in the first section, offering a historical view of MPU resident headcount by student level and county. In the final section are the actual annual and cumulative enrollment growth rates by student type and county. The base year used for the cumulative growth rates is 2009.

Livingston County MPU FTIAC Market Share

Year	CMU	EMU	GVSU	MSU	WSU	All Others	Total Headcount
2010	19.0%	7.7%	12.7%	24.4%	1.5%	34.7%	741
2011	15.6%	7.4%	13.8%	25.4%	1.3%	36.5%	820
2012	11.8%	12.5%	13.5%	25.9%	2.7%	33.6%	822
2013	9.1%	15.4%	14.9%	19.5%	1.2%	39.9%	855
2014	14.7%	15.2%	13.5%	21.0%	1.6%	34.1%	928
2015	11.6%	14.1%	16.2%	19.5%	1.9%	36.6%	893

Livingston County MPU Undergraduate Market Share

Year	CMU	GVSU	EMU	MSU	WSU	All Others	Total Headcount
2010	13.1%	10.3%	22.3%	23.0%	1.5%	29.8%	4,527
2011	12.9%	10.7%	21.3%	23.0%	1.8%	30.3%	4,668
2012	12.2%	10.8%	21.7%	23.1%	2.2%	29.9%	4,689
2013	11.2%	11.1%	21.0%	21.8%	2.3%	32.6%	4,858
2014	11.3%	11.4%	19.8%	21.1%	2.4%	34.0%	5,040
2015	11.2%	11.7%	19.3%	20.8%	2.3%	34.7%	5,013

Livingston County MPU Graduate Market Share

Year	CMU	EMU	MSU	UM-AA	WSU	All Others	Total Headcount
2010	4.7%	31.1%	21.0%	13.5%	10.4%	19.3%	704
2011	5.2%	27.5%	22.6%	13.5%	10.4%	20.7%	690
2012	4.8%	26.3%	22.6%	14.8%	10.1%	21.3%	703
2013	4.1%	21.9%	23.6%	15.0%	9.5%	26.0%	666
2014	6.2%	21.9%	22.2%	14.3%	9.3%	26.0%	657
2015	6.6%	21.0%	25.9%	14.6%	9.9%	22.0%	686

Livingston County MPU Total Market Share

Year	CMU	EMU	GVSU	MSU	WSU	All Others	Total Headcount
2010	11.9%	23.5%	9.4%	22.7%	2.7%	29.7%	5,231
2011	11.9%	22.1%	9.6%	22.9%	2.9%	30.5%	5,357
2012	11.3%	22.3%	9.9%	23.0%	3.2%	30.2%	5,392
2013	10.3%	21.1%	10.3%	22.0%	3.2%	33.1%	5,524
2014	10.7%	20.1%	10.7%	21.3%	3.2%	34.2%	5,697
2015	10.6%	19.5%	10.8%	21.5%	3.2%	34.4%	5,699

Macomb County MPU FTIAC Market Share

Year	CMU	GVSU	MSU	OU	WSU	All Others	Total Headcount
2010	13.3%	6.6%	16.2%	23.6%	13.7%	26.6%	3,057
2011	10.8%	6.6%	16.7%	23.5%	15.6%	26.8%	3,050
2012	9.3%	6.3%	16.6%	25.6%	15.4%	26.9%	3,086
2013	8.2%	7.6%	15.7%	26.5%	13.5%	28.5%	2,986
2014	10.9%	8.0%	15.6%	26.4%	13.0%	26.1%	3,079
2015	10.2%	7.6%	16.4%	27.0%	15.2%	23.8%	3,089

Macomb County MPU Undergraduate Market Share

Year	CMU	GVSU	MSU	OU	WSU	All Others	Total Headcount
2010	10.9%	5.1%	13.0%	28.8%	19.8%	22.4%	17,996
2011	10.9%	5.0%	13.0%	28.7%	20.2%	22.2%	18,330
2012	10.4%	4.8%	13.0%	29.1%	20.8%	21.8%	18,467
2013	9.9%	5.1%	12.9%	29.7%	20.6%	21.9%	18,462
2014	9.9%	5.3%	13.1%	30.3%	19.9%	21.5%	18,476
2015	9.4%	5.5%	13.2%	30.8%	19.6%	21.5%	18,356

Macomb County MPU Graduate Market Share

Year	CMU	MSU	OU	UM-AA	WSU	All Others	Total Headcount
2010	7.6%	9.4%	24.8%	6.0%	32.6%	19.6%	3,486
2011	8.1%	10.5%	24.5%	5.9%	32.8%	18.2%	3,534
2012	8.0%	11.1%	22.8%	6.5%	33.5%	18.1%	3,351
2013	9.3%	11.7%	21.4%	6.7%	34.0%	17.0%	3,310
2014	9.1%	12.0%	22.5%	6.6%	34.1%	15.7%	3,173
2015	9.5%	11.5%	21.1%	7.6%	33.9%	16.4%	3,250

Macomb County MPU Total Market Share

Year	CMU	GVSU	MSU	OU	WSU	All Others	Total Headcount
2010	10.4%	4.5%	12.4%	28.1%	21.9%	22.7%	21,482
2011	10.4%	4.4%	12.6%	28.0%	22.3%	22.3%	21,864
2012	10.1%	4.3%	12.7%	28.2%	22.8%	22.0%	21,818
2013	9.8%	4.6%	12.7%	28.4%	22.7%	21.9%	21,772
2014	9.8%	4.7%	12.9%	29.2%	22.0%	21.3%	21,649
2015	9.4%	5.1%	12.9%	29.4%	21.7%	21.5%	21,606

Monroe County MPU FTIAC Market Share

Year	CMU	EMU	MSU	UM-AA	WSU	All Others	Total Headcount
2010	12.6%	15.4%	16.2%	15.0%	4.7%	36.0%	253
2011	16.9%	14.4%	16.2%	11.9%	4.0%	36.7%	278
2012	17.0%	16.6%	20.2%	10.1%	3.2%	32.8%	247
2013	11.1%	18.9%	15.2%	11.1%	2.5%	41.4%	244
2014	12.3%	22.1%	15.8%	11.2%	3.5%	35.1%	285
2015	10.4%	23.0%	14.3%	10.4%	2.6%	39.1%	230

Monroe County MPU Undergraduate Market Share

Year	CMU	EMU	MSU	UM-AA	WSU	All Others	Total Headcount
2010	10.7%	34.1%	15.6%	8.4%	4.6%	26.6%	1,676
2011	11.0%	33.9%	14.3%	8.6%	5.1%	27.0%	1,688
2012	11.6%	34.4%	14.0%	9.2%	4.3%	26.4%	1,674
2013	11.0%	33.2%	12.7%	9.5%	4.3%	29.3%	1,593
2014	11.0%	32.5%	12.7%	9.7%	4.6%	29.5%	1,585
2015	11.2%	32.7%	12.9%	9.7%	4.4%	29.0%	1,494

Monroe County MPU Graduate Market Share

Year	CMU	EMU	MSU	UM-AA	WSU	All Others	Total Headcount
2010	4.3%	42.2%	14.3%	9.0%	16.1%	14.0%	322
2011	5.8%	38.2%	13.7%	9.3%	17.5%	15.5%	343
2012	5.8%	38.2%	11.3%	10.4%	20.2%	14.1%	327
2013	5.9%	40.1%	12.1%	8.1%	18.4%	15.4%	272
2014	7.1%	36.9%	13.8%	9.9%	17.4%	14.9%	282
2015	8.4%	34.8%	12.8%	13.5%	15.2%	15.2%	296

Monroe County MPU Total Market Share

Year	CMU	EMU	MSU	UM-AA	WSU	All Others	Total Headcount
2010	9.7%	35.4%	15.4%	8.5%	6.5%	24.6%	1,998
2011	10.1%	34.6%	14.2%	8.8%	7.2%	25.1%	2,031
2012	10.7%	35.0%	13.6%	9.4%	6.9%	24.4%	2,001
2013	10.2%	34.2%	12.6%	9.3%	6.3%	27.3%	1,865
2014	10.4%	33.2%	12.9%	9.7%	6.5%	27.3%	1,867
2015	10.8%	33.1%	12.8%	10.3%	6.2%	26.8%	1,790

Oakland County MPU FTIAC Market Share

Year	GVSU	MSU	OU	UM-AA	WSU	All Others	Total Headcount
2010	6.7%	22.1%	14.3%	19.0%	6.5%	31.3%	6,613
2011	7.4%	23.1%	15.5%	18.3%	6.4%	29.2%	6,431
2012	7.8%	24.2%	16.6%	16.4%	6.7%	28.2%	6,541
2013	8.1%	22.9%	16.3%	17.8%	7.2%	27.7%	6,603
2014	8.9%	22.9%	15.7%	17.6%	6.8%	28.1%	6,496
2015	9.9%	23.1%	15.3%	17.7%	8.3%	25.7%	6,424

Oakland County MPU Undergraduate Market Share

Year	CMU	MSU	OU	UM-AA	WSU	All Others	Total Headcount
2010	9.8%	19.7%	19.8%	14.0%	10.9%	25.7%	36,182
2011	9.7%	19.2%	20.2%	14.1%	11.0%	25.8%	36,194
2012	9.2%	20.0%	20.6%	13.9%	10.7%	25.5%	36,448
2013	8.7%	20.3%	20.9%	14.0%	10.6%	25.4%	36,420
2014	8.8%	20.6%	21.1%	13.9%	10.5%	25.2%	36,190
2015	8.6%	21.0%	20.7%	14.0%	10.3%	25.4%	35,533

Oakland County MPU Graduate Market Share

Year	CMU	MSU	OU	UM-AA	WSU	All Others	Total Headcount
2010	6.0%	12.7%	19.5%	13.2%	33.2%	15.5%	8,212
2011	6.3%	13.7%	20.1%	13.5%	30.6%	15.9%	7,926
2012	6.3%	14.9%	20.4%	13.5%	29.4%	15.5%	7,897
2013	6.1%	15.2%	20.5%	13.8%	28.4%	16.0%	7,688
2014	6.1%	15.1%	20.5%	13.4%	28.2%	16.7%	7,502
2015	6.3%	15.5%	18.4%	14.5%	27.9%	17.4%	7,522

Oakland County MPU Total Market Share

Year	CMU	MSU	OU	UM-AA	WSU	All Others	Total Headcount
2010	9.1%	18.4%	19.8%	13.9%	15.0%	23.8%	44,394
2011	9.1%	18.2%	20.2%	14.0%	14.5%	24.0%	44,120
2012	8.7%	19.1%	20.6%	13.9%	14.0%	23.7%	44,345
2013	8.3%	19.4%	20.8%	13.9%	13.8%	23.8%	44,108
2014	8.3%	19.7%	21.0%	13.8%	13.6%	23.7%	43,692
2015	8.2%	20.0%	20.3%	14.1%	13.3%	24.0%	43,055

St. Clair County MPU FTIAC Market Share

Year	CMU	MSU	OU	SVSU	WSU	All Others	Total Headcount
2010	19.4%	14.4%	8.2%	9.4%	5.7%	42.9%	403
2011	14.7%	13.5%	11.6%	11.8%	2.4%	45.9%	414
2012	12.1%	12.4%	12.9%	7.6%	7.6%	47.5%	356
2013	15.0%	11.9%	20.2%	7.8%	4.1%	40.9%	386
2014	10.1%	16.4%	15.6%	9.1%	5.0%	43.8%	397
2015	12.5%	14.5%	19.2%	11.0%	4.3%	38.5%	447

St. Clair County MPU Undergraduate Market Share

Year	CMU	GVSU	MSU	OU	WSU	All Others	Total Headcount
2010	16.2%	7.9%	13.1%	11.1%	8.1%	43.6%	2,690
2011	16.5%	7.7%	12.6%	11.6%	8.1%	43.5%	2,751
2012	17.0%	9.6%	12.3%	13.5%	9.2%	38.3%	2,598
2013	16.9%	9.4%	10.9%	15.4%	8.0%	39.4%	2,626
2014	15.5%	10.7%	10.6%	16.0%	7.9%	39.4%	2,619
2015	15.4%	10.2%	11.1%	17.8%	7.3%	38.2%	2,599

St. Clair County MPU Graduate Market Share

Year	CMU	MSU	OU	SVSU	WSU	All Others	Total Headcount
2010	14.1%	9.3%	10.6%	17.4%	21.7%	26.9%	461
2011	11.5%	11.3%	10.6%	17.3%	20.7%	28.6%	434
2012	12.0%	16.0%	10.7%	14.4%	21.9%	24.9%	374
2013	14.8%	15.8%	13.0%	9.7%	18.3%	28.5%	393
2014	14.9%	16.3%	11.4%	9.2%	18.2%	29.9%	368
2015	14.0%	16.2%	15.9%	7.3%	22.9%	23.7%	358

St. Clair County MPU Total Market Share

Year	CMU	GVSU	MSU	OU	WSU	All Others	Total Headcount
2010	15.9%	7.2%	12.6%	11.0%	10.1%	43.2%	3,151
2011	15.8%	6.9%	12.4%	11.4%	9.9%	43.6%	3,185
2012	16.4%	8.6%	12.8%	13.2%	10.8%	38.2%	2,972
2013	16.6%	8.4%	11.5%	15.1%	9.4%	38.9%	3,019
2014	15.5%	9.6%	11.3%	15.4%	9.2%	39.1%	2,987
2015	15.2%	9.3%	11.7%	17.6%	9.2%	37.0%	2,957

Washtenaw County MPU FTIAC Market Share

Year	EMU	MSU	UM-AA	WMU	WSU	All Others	Total Headcount
2010	22.6%	16.4%	30.1%	7.3%	1.8%	21.8%	1,356
2011	21.9%	15.5%	28.9%	9.4%	1.7%	22.5%	1,283
2012	25.9%	17.7%	29.7%	5.8%	2.2%	18.7%	1,410
2013	26.5%	14.0%	31.4%	8.2%	0.8%	19.0%	1,471
2014	25.8%	15.3%	30.8%	7.0%	1.9%	19.2%	1,377
2015	27.9%	13.8%	28.0%	6.6%	2.1%	21.6%	1,396

Washtenaw County MPU Undergraduate Market Share

Year	EMU	MSU	UM-AA	WMU	WSU	All Others	Total Headcount
2010	45.3%	11.7%	22.2%	5.1%	2.2%	13.5%	9,004
2011	45.0%	11.1%	22.5%	5.0%	2.1%	14.2%	9,130
2012	44.6%	11.7%	23.0%	4.7%	2.3%	13.8%	9,215
2013	43.5%	11.8%	23.1%	5.2%	2.3%	14.2%	9,186
2014	42.3%	12.0%	23.2%	5.2%	2.1%	15.2%	9,105
2015	40.8%	12.0%	24.3%	5.1%	2.0%	15.8%	8,825

Washtenaw County MPU Graduate Market Share

Year	CMU	EMU	MSU	UM-AA	WSU	All Others	Total Headcount
2010	1.3%	38.0%	7.9%	35.0%	8.6%	9.2%	3,095
2011	1.4%	37.1%	8.1%	34.6%	11.7%	7.0%	3,048
2012	1.4%	34.3%	9.0%	36.2%	11.2%	7.9%	3,001
2013	1.9%	32.2%	9.1%	38.0%	11.5%	7.3%	2,874
2014	2.0%	31.0%	8.7%	37.4%	10.4%	10.4%	2,894
2015	2.1%	28.4%	8.0%	42.5%	10.2%	8.9%	3,095

Washtenaw County MPU Total Market Share

Year	EMU	MSU	UM-AA	WMU	WSU	All Others	Total Headcount
2010	43.4%	10.7%	25.4%	4.0%	4.6%	11.8%	12,099
2011	43.0%	10.4%	25.5%	4.0%	4.4%	12.7%	12,178
2012	42.1%	11.1%	26.2%	3.8%	4.5%	12.4%	12,216
2013	40.8%	11.2%	26.7%	4.2%	4.2%	13.0%	12,060
2014	39.6%	11.2%	26.6%	4.3%	4.2%	14.1%	11,999
2015	37.6%	11.0%	29.1%	4.0%	4.1%	14.3%	11,920

Wayne County MPU FTIAC Market Share

Year	EMU	MSU	UM-AA	UM-D	WSU	All Others	Total Headcount
2010	11.8%	12.4%	9.2%	10.9%	25.9%	29.8%	6,248
2011	12.6%	14.4%	9.2%	11.6%	23.0%	29.2%	6,196
2012	15.2%	15.1%	9.3%	10.5%	20.8%	29.2%	5,879
2013	16.2%	15.7%	10.0%	11.3%	18.1%	28.8%	5,950
2014	14.8%	14.9%	10.6%	11.5%	17.8%	30.5%	5,814
2015	15.4%	16.2%	8.9%	11.7%	19.9%	27.9%	6,134

Wayne County MPU Undergraduate Market Share

Year	EMU	MSU	UM-AA	UM-D	WSU	All Others	Total Headcount
2010	17.1%	11.2%	7.5%	14.7%	28.3%	21.2%	36,559
2011	17.4%	11.0%	7.5%	15.2%	27.1%	21.8%	36,896
2012	18.2%	11.4%	7.5%	15.2%	25.6%	22.1%	36,445
2013	18.4%	11.9%	7.7%	15.0%	24.5%	22.5%	35,612
2014	18.0%	12.1%	7.8%	15.1%	23.8%	23.2%	35,203
2015	17.5%	12.8%	7.8%	15.2%	23.3%	23.3%	34,647

Wayne County MPU Graduate Market Share

Year	EMU	MSU	UM-AA	UM-D	WSU	All Others	Total Headcount
2010	16.1%	7.8%	8.6%	10.2%	41.5%	15.8%	7,610
2011	15.7%	8.5%	8.6%	10.1%	40.4%	16.7%	7,477
2012	16.6%	9.6%	9.0%	8.8%	39.5%	16.5%	6,976
2013	15.3%	10.7%	9.8%	8.4%	38.9%	17.0%	6,614
2014	14.4%	11.1%	10.0%	8.8%	38.7%	16.9%	6,561
2015	13.5%	10.6%	11.9%	8.9%	38.5%	16.7%	6,662

Wayne County MPU Total Market Share

Year	EMU	MSU	UM-AA	UM-D	WSU	All Others	Total Headcount
2010	16.6%	11.2%	7.6%	13.8%	31.4%	19.5%	44,169
2011	16.9%	10.6%	7.6%	13.9%	30.6%	20.3%	44,373
2012	17.1%	10.6%	7.7%	14.3%	29.4%	20.9%	43,421
2013	18.0%	11.2%	7.7%	14.1%	27.8%	21.2%	42,226
2014	17.9%	11.7%	8.0%	14.0%	26.7%	21.7%	41,764
2015	17.4%	12.0%	8.2%	14.1%	26.2%	22.2%	41,309

FTIAC Enrollment Comparison

FTIAC										
Year	Livingston	Macomb	Monroe	Oakland	St. Clair	Washtenaw	Wayne	Seven County Total	Other Counties	State Total
2010	741	3,057	253	6,613	403	1,356	6,248	18,671	16,065	34,736
2011	820	3,050	278	6,431	414	1,283	6,196	18,472	15,938	34,410
2012	822	3,086	247	6,541	356	1,410	5,879	18,341	15,180	33,521
2013	855	2,986	244	6,603	386	1,471	5,950	18,495	15,221	33,716
2014	928	3,079	285	6,496	397	1,377	5,814	18,376	14,955	33,331
2015	893	3,089	230	6,428	447	1,396	6,134	18,613	14,719	33,332

Undergraduate Enrollment Comparison

Undergraduate										
Year	Livingston	Macomb	Monroe	Oakland	St. Clair	Washtenaw	Wayne	Seven County Total	Other Counties	State Total
2010	4,527	17,996	1,676	36,182	2,690	9,004	36,559	108,634	97,412	206,046
2011	4,668	18,330	1,688	36,194	2,751	9,130	36,896	109,657	95,984	205,641
2012	4,689	18,467	1,674	36,448	2,598	9,215	36,445	109,536	93,590	203,126
2013	4,858	18,462	1,593	36,420	2,626	9,186	35,612	108,757	91,648	200,405
2014	5,040	18,476	1,585	36,190	2,619	9,105	35,203	108,218	90,636	198,854
2015	5,013	18,356	1,494	35,533	2,599	8,825	34,647	106,467	89,013	195,480

Graduate Enrollment Comparison

Graduate										
Year	Livingston	Macomb	Monroe	Oakland	St. Clair	Washtenaw	Wayne	Seven County Total	Other Counties	State Total
2010	704	3,486	322	8,212	461	3,095	7,610	23,890	22,713	46,603
2011	690	3,534	343	7,926	434	3,048	7,477	23,452	22,121	45,573
2012	703	3,351	327	7,897	374	3,001	6,976	22,629	21,493	44,122
2013	666	3,310	272	7,688	393	2,874	6,614	21,817	20,739	42,556
2014	657	3,173	282	7,502	368	2,894	6,561	21,437	20,467	41,904
2015	686	3,250	296	7,522	358	3,095	6,662	21,943	19,372	41,241

Total Enrollment Comparison

Total										
Year	Livingston	Macomb	Monroe	Oakland	St. Clair	Washtenaw	Wayne	Seven County Total	Other Counties	State Total
2010	5,231	21,482	1,998	44,394	3,151	12,099	44,169	132,524	120,125	252,649
2011	5,357	21,864	2,031	44,120	3,185	12,178	44,373	133,108	118,106	251,214
2012	5,392	21,818	2,001	44,345	2,972	12,216	43,421	132,165	115,083	247,248
2013	5,524	21,772	1,865	44,108	3,019	12,060	42,226	130,574	112,387	242,961
2014	5,697	21,649	1,867	43,692	2,987	11,999	41,764	129,655	111,103	240,758
2015	5,699	21,606	1,790	43,055	2,957	11,920	41,309	128,336	108,385	236,721

FTIAC Year-to-Year % Change

FTIAC									
Year	Livingston	Macomb	Monroe	Oakland	St. Clair	Washtenaw	Wayne	Seven County Total	Other Counties
2010	-3.1%	1.0%	-12.2%	1.3%	1.0%	3.4%	-2.3%	-0.2%	-1.3%
2011	10.7%	-0.2%	9.9%	-2.8%	2.7%	-5.4%	-0.8%	-1.1%	-0.8%
2012	0.2%	1.2%	-11.2%	1.7%	-14.0%	9.9%	-5.1%	-0.7%	-4.8%
2013	4.0%	-3.2%	-1.2%	0.9%	8.4%	4.3%	1.2%	0.8%	0.3%
2014	8.5%	3.1%	16.8%	-1.6%	2.8%	-6.4%	-2.3%	-0.6%	-1.7%
2015	-3.8%	0.3%	-19.3%	-1.1%	12.6%	1.4%	5.5%	1.3%	-1.6%

Undergraduate Year-to-Year % Change

Undergraduate									
Year	Livingston	Macomb	Monroe	Oakland	St. Clair	Washtenaw	Wayne	Seven County Total	Other Counties
2010	2.8%	1.9%	-1.0%	1.5%	7.1%	2.3%	1.4%	1.7%	1.2%
2011	3.1%	1.9%	0.7%	0.0%	2.3%	1.4%	0.9%	0.9%	-1.5%
2012	0.4%	0.7%	-0.8%	0.7%	-5.6%	0.9%	-1.2%	-0.1%	-2.5%
2013	3.6%	0.0%	-4.8%	-0.1%	1.1%	-0.3%	-2.3%	-0.7%	-2.1%
2014	3.7%	0.1%	-0.5%	-0.6%	-0.3%	-0.9%	-1.1%	-0.5%	-1.1%
2015	-0.5%	-0.6%	-5.7%	-1.8%	-0.8%	-3.1%	-1.6%	-1.6%	-1.8%

Graduate Year-to-Year % Change

Graduate									
Year	Livingston	Macomb	Monroe	Oakland	St. Clair	Washtenaw	Wayne	Seven County Total	Other Counties
2010	2.0%	-2.9%	-12.5%	-1.8%	4.1%	-26.6%	-0.9%	-5.8%	2.2%
2011	-2.0%	1.4%	6.5%	-3.5%	-5.9%	-1.5%	-1.7%	-1.8%	-2.6%
2012	1.9%	-5.2%	-4.7%	-0.4%	-13.8%	-1.5%	-6.7%	-3.5%	-2.8%
2013	-5.3%	-1.2%	-16.8%	-2.6%	5.1%	-4.2%	-5.2%	-3.6%	-3.5%
2014	-1.4%	-4.1%	3.7%	-2.4%	-6.4%	0.7%	-0.8%	-1.7%	-1.3%
2015	4.4%	2.4%	5.0%	0.3%	-2.7%	6.9%	1.5%	2.0%	-5.4%

Total Year-to-Year % Change

Total									
Year	Livingston	Macomb	Monroe	Oakland	St. Clair	Washtenaw	Wayne	Seven County Total	Other Counties
2010	2.7%	1.1%	-3.1%	0.9%	6.7%	-7.1%	1.0%	0.3%	1.4%
2011	2.4%	1.8%	1.7%	-0.6%	1.1%	0.7%	0.5%	0.4%	-1.7%
2012	0.7%	-0.2%	-1.5%	0.5%	-6.7%	0.3%	-2.1%	-0.7%	-2.6%
2013	2.4%	-0.2%	-6.8%	-0.5%	1.6%	-1.3%	-2.8%	-1.2%	-2.3%
2014	3.1%	-0.6%	0.1%	-0.9%	-1.1%	-0.5%	-1.1%	-0.7%	-1.1%
2015	0.0%	-0.2%	-4.1%	-1.5%	-1.0%	-0.7%	-1.1%	-1.0%	-2.4%

FTIAC Cumulative % Change 2011 - 2015

FTIAC									
Year	Livingston	Macomb	Monroe	Oakland	St. Clair	Washtenaw	Wayne	Seven County Total	Other Counties
2011	10.7%	-0.2%	9.9%	-2.8%	2.7%	-5.4%	-0.8%	-1.1%	-0.8%
2012	10.9%	0.9%	-2.4%	-1.1%	-11.7%	4.0%	-5.9%	-1.8%	-5.5%
2013	15.4%	-2.3%	-3.6%	-0.2%	-4.2%	8.5%	-4.8%	-0.9%	-5.3%
2014	25.2%	0.7%	12.6%	-1.8%	-1.5%	1.5%	-6.9%	-1.6%	-6.9%
2015	20.5%	1.0%	-9.1%	-2.9%	10.9%	2.9%	-1.8%	-0.3%	-8.4%

Undergraduate Cumulative % Change 2011 - 2015

Undergraduate									
Year	Livingston	Macomb	Monroe	Oakland	St. Clair	Washtenaw	Wayne	Seven County Total	Other Counties
2011	3.1%	1.9%	0.7%	0.0%	2.3%	1.4%	0.9%	0.9%	-1.5%
2012	3.6%	2.6%	-0.1%	0.7%	-3.4%	2.3%	-0.3%	0.8%	-3.9%
2013	7.3%	2.6%	-5.0%	0.7%	-2.4%	2.0%	-2.6%	0.1%	-5.9%
2014	11.3%	2.7%	-5.4%	0.0%	-2.6%	1.1%	-3.7%	-0.4%	-7.0%
2015	10.7%	2.0%	-10.9%	-1.8%	-3.4%	-2.0%	-5.2%	-2.0%	-8.6%

Graduate Cumulative % Change 2011 – 2015

Graduate									
Year	Livingston	Macomb	Monroe	Oakland	St. Clair	Washtenaw	Wayne	Seven County Total	Other Counties
2011	-2.0%	1.4%	6.5%	-3.5%	-5.9%	-1.5%	-1.7%	-1.8%	-2.6%
2012	-0.1%	-3.9%	1.6%	-3.8%	-18.9%	-3.0%	-8.3%	-5.3%	-5.4%
2013	-5.4%	-5.0%	-15.5%	-6.4%	-14.8%	-7.1%	-13.1%	-8.7%	-8.7%
2014	-6.7%	-9.0%	-12.4%	-8.6%	-20.2%	-6.5%	-13.8%	-10.3%	-9.9%
2015	-2.6%	-6.8%	-8.1%	-8.4%	-22.3%	0.0%	-12.5%	-8.5%	-14.7%

Total Cumulative % Change 2011 – 2015

Total									
Year	Livingston	Macomb	Monroe	Oakland	St. Clair	Washtenaw	Wayne	Seven County Total	Other Counties
2011	2.4%	1.8%	1.7%	-0.6%	1.1%	0.7%	0.5%	0.4%	-1.7%
2012	3.1%	1.6%	0.2%	-0.1%	-5.7%	1.0%	-1.7%	-0.3%	-4.2%
2013	5.6%	1.3%	-6.7%	-0.6%	-4.2%	-0.3%	-4.4%	-1.5%	-6.4%
2014	8.9%	0.8%	-6.6%	-1.6%	-5.2%	-0.8%	-5.4%	-2.2%	-7.5%
2015	8.9%	0.6%	-10.4%	-2.9%	-6.2%	-1.4%	-6.4%	-3.1%	-9.8%

This page left blank intentionally

Appendix B– Southeast Michigan Council of Governments 2040 School Age Population Forecast

In April 2012, the Southeast Michigan Council of Governments (SEMCOG) released a forecast for the school age (5-17) population change in the seven SEMCOG counties. About 82% of Wayne State University’s total enrollment is derived from those seven counties. The report states that in the next 8 years, Southeast Michigan will have a decrease of 112,000 school age children. The decrease will continue until 2030 at which point the decrease will stabilize and begin a slow rebound through 2040.

The following is the rate at which the school age population is forecasted to decline by 2020:

- Livingston County 16%
- Macomb County 5%
- Monroe County 14%
- Oakland County 12%
- St. Clair County 17%
- Washtenaw County 9%
- Wayne County 18%

Attached is the SEMCOG School Age Population Forecast which may also be found online at:

<http://library.semco.org/InmagicGenie/DocumentFolder/SchoolDistrictForecast.9-2012.pdf> .