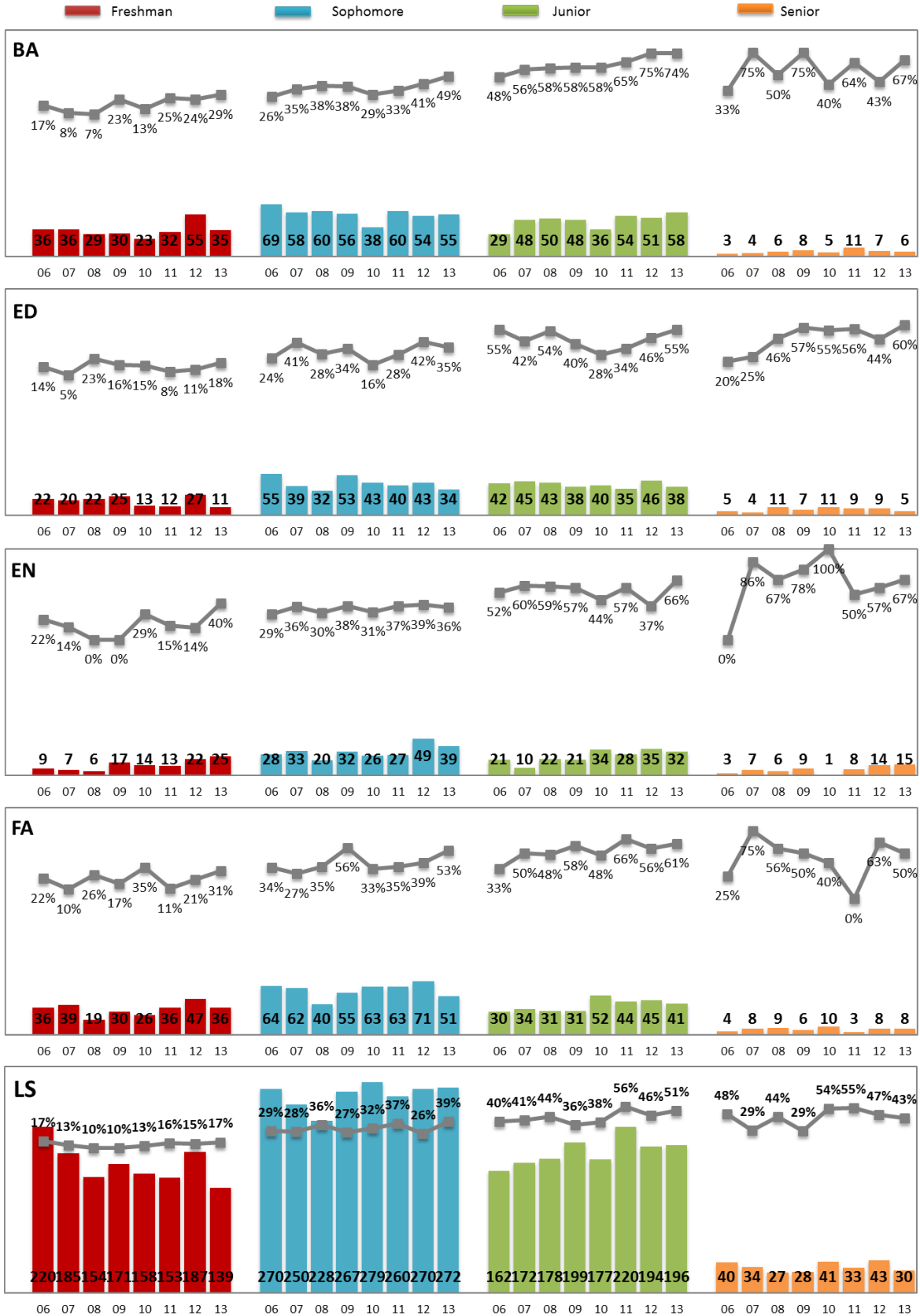


Four-year Graduation Rate by College & Class Level*

Full-time Transfer Cohort 2006-2013

Line chart is Graduation rate; Bar chart is cohort headcount at the time students transferred into WSU.



*Class level: at the time students transferred into WSU. See more definitions in last page.

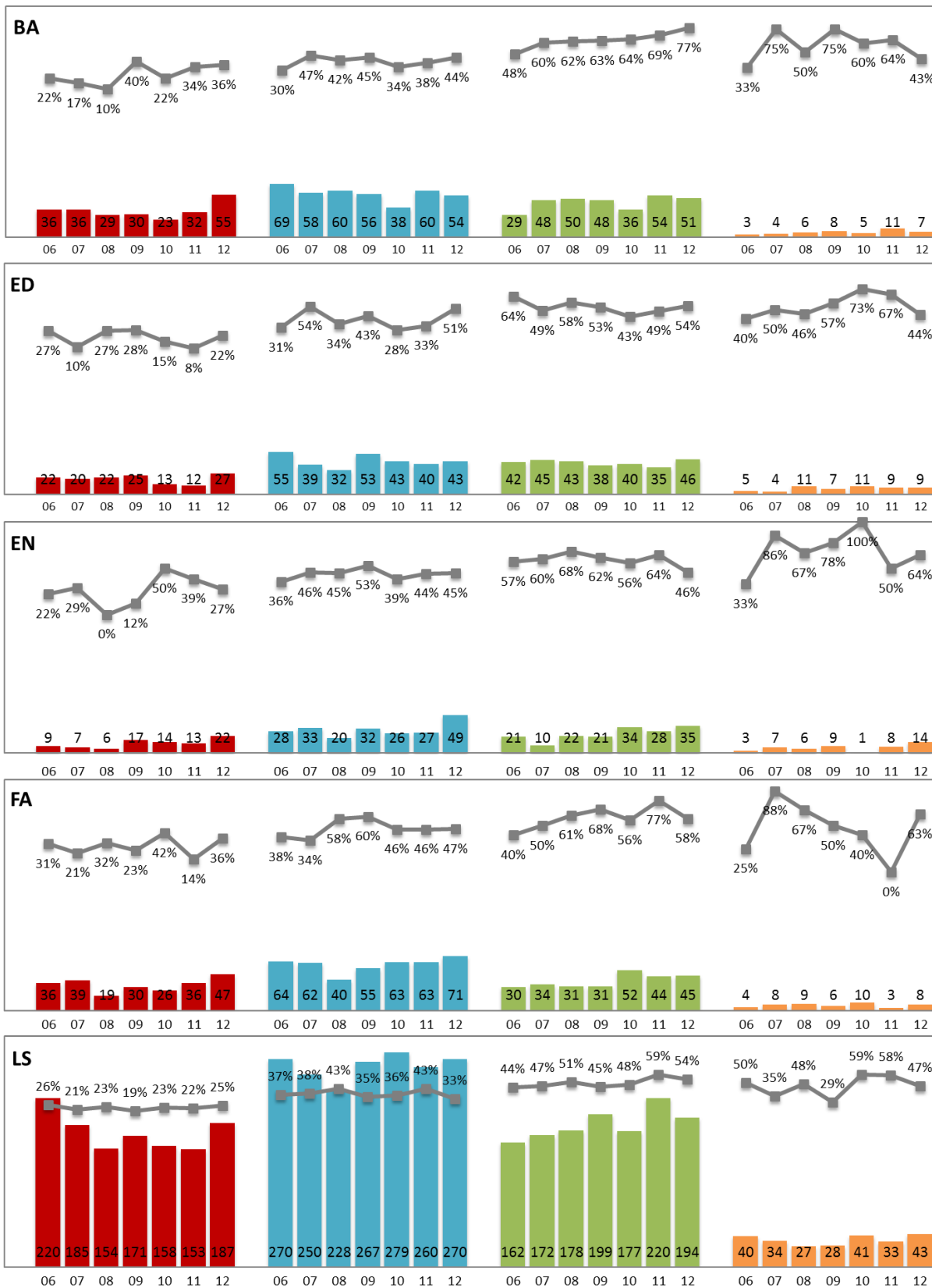
Five-year Graduation Rate by College & Class Level*

Full-time Transfer Cohort 2006-2012



Line chart is Graduation rate; Bar chart is cohort headcount at the time students transferred into WSU.

Freshman Sophomore Junior Senior



*Class level: at the time students transferred into WSU. See more definitions in last page.

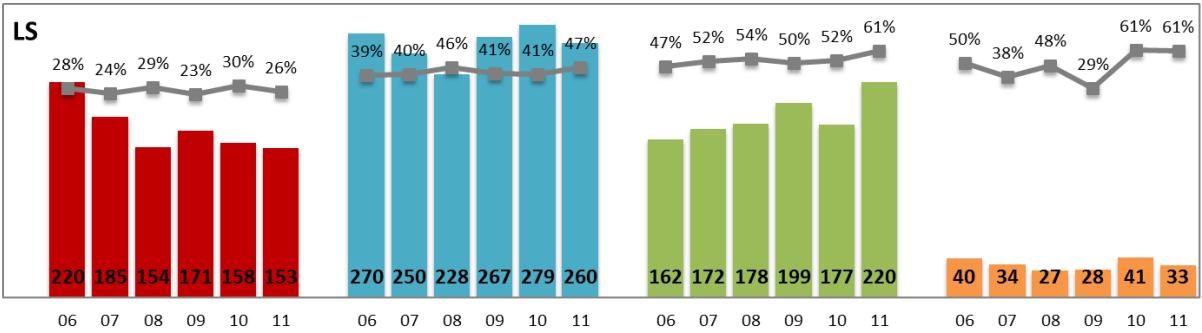
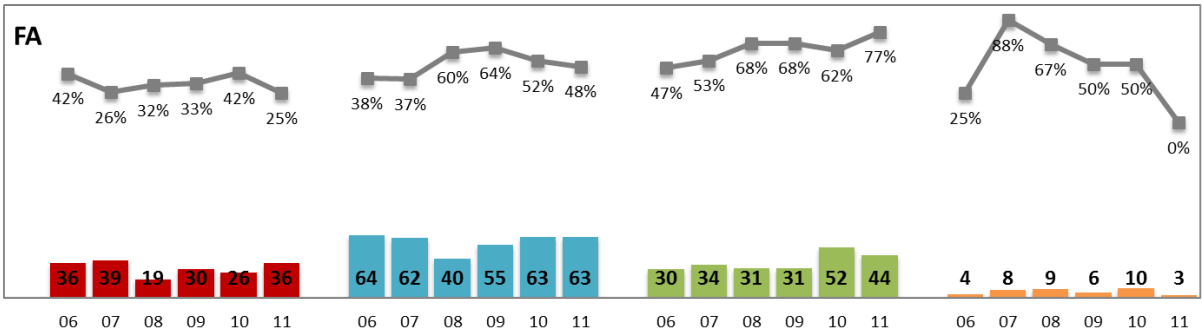
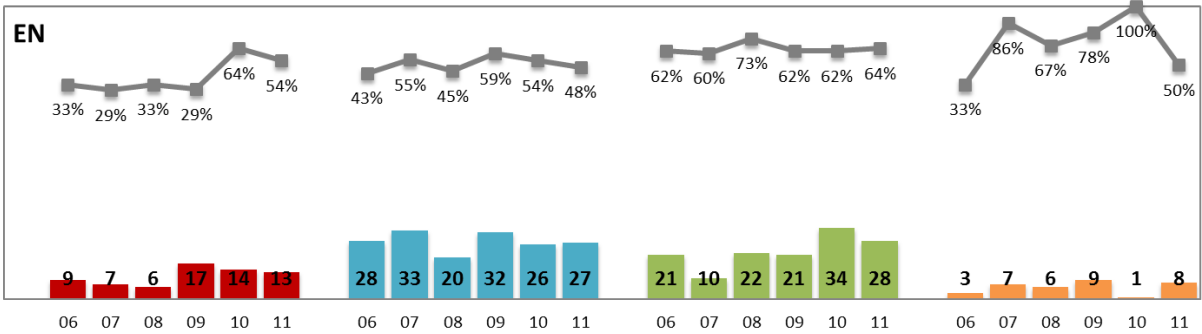
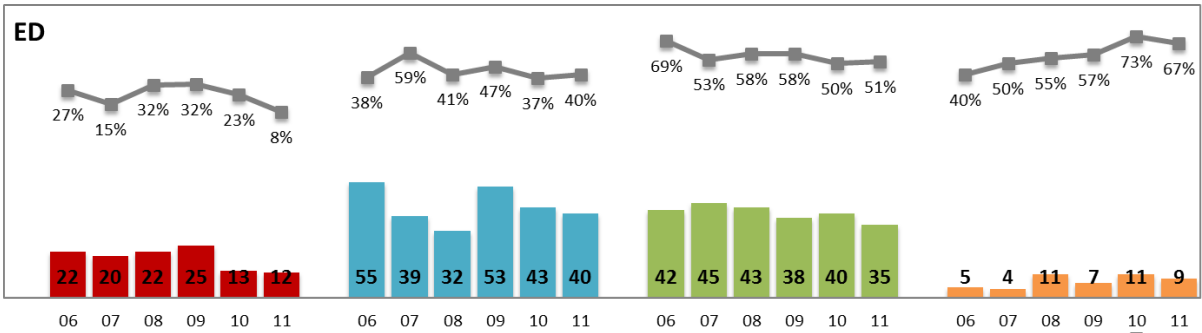
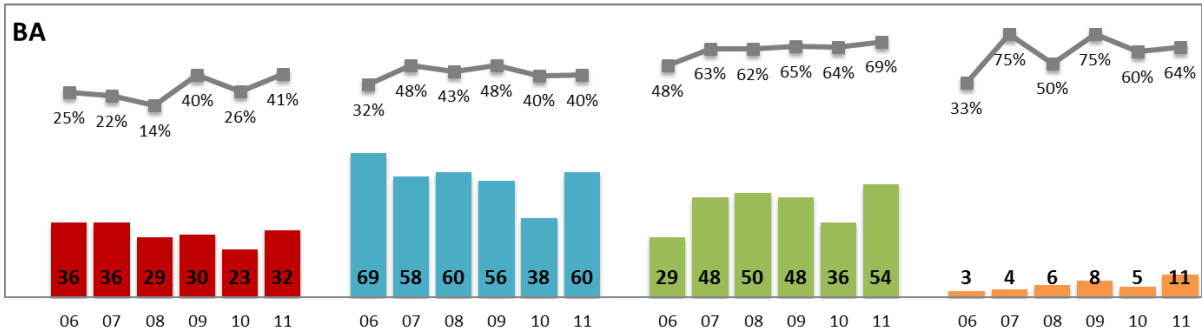
Six-year Graduation Rate by College & Class Level*

Full-time Transfer Cohort 2006-2011

Line chart is Graduation rate; Bar chart is cohort headcount at the time students transferred into WSU.



Freshman **Sophomore** **Junior** **Senior**



*Class level: at the time students transferred into WSU. See more definitions in last page.



Timing Definition: The definition of “a year” is the 12-month period from the beginning of a fall term in one year to the beginning of the following fall term. The fall enrollment status is based on the official reporting date for the IPEDS fall enrollment report.

Transfer Student: (IPEDS definition) A student entering Wayne State University for the first time but known to have previously attended a postsecondary institution at the same level (e.g., undergraduate). This includes new students enrolled in the fall term who transferred into the institution the prior summer term. The student may transfer with or without credit.

Graduation Rates: Graduation rate is the cumulative percentage of transfer students in a given fall term who graduated within a designated period of time. For example, the “5 Year Graduation Rate” for fall 2012 transfer students is the percentage of fall 2012 transfer students who graduated from the university by the fall 2017 term including those students who completed their courses during the summer of 2017.

Reminder: As is the convention with IPEDS, data used for these calculations may be adjusted for students who departed for the following reasons: deceased, permanently disabled, or joined the armed forces (including those called to active duty from the Reserves or National Guard) or foreign aid service of the federal government or official church missions. These are allowable exclusions, and may be subtracted from the cohort prior to calculating the graduation rate.

Example: 4 Year Graduation Rate calculation: $\text{Number in cohort who graduated within 4 years} / (\text{cohort headcount} - \text{the allowable exclusions})$.