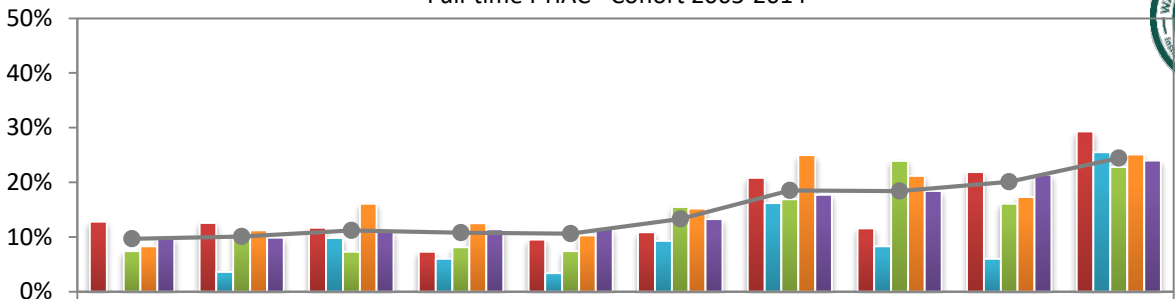


4 Year Graduation Rate*, by College

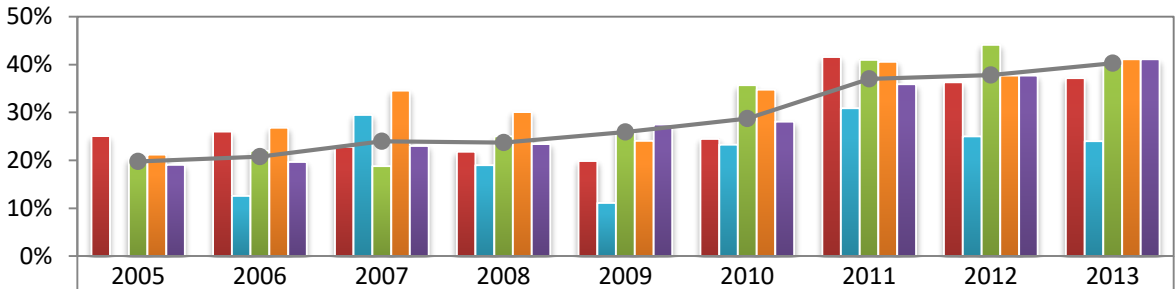
Full-time FTIAC* Cohort 2005-2014



	2005	2006	2007	2008	2009	2010	2011	2012	2013	2014
BA	12.8%	12.6%	11.7%	7.3%	9.5%	10.9%	20.8%	11.6%	21.9%	29.3%
ED		3.6%	9.8%	6.0%	3.4%	9.3%	16.2%	8.3%	6.0%	25.5%
EN	7.4%	11.0%	7.3%	8.1%	7.4%	15.5%	16.9%	23.9%	16.1%	22.8%
FA	8.3%	11.2%	16.1%	12.5%	10.3%	15.2%	25.0%	21.2%	17.3%	25.1%
LS	9.8%	9.9%	11.0%	11.4%	11.5%	13.3%	17.7%	18.4%	21.4%	24.0%
—●— Total	9.7%	10.1%	11.2%	10.8%	10.6%	13.3%	18.5%	18.4%	20.1%	24.4%

5 Year Graduation Rate, by College

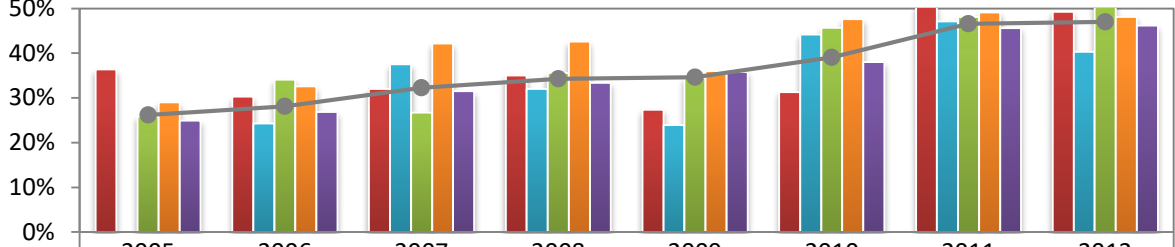
Full-time FTIAC Cohort 2005-2013



	2005	2006	2007	2008	2009	2010	2011	2012	2013
BA	25.1%	26.0%	22.8%	21.8%	19.9%	24.5%	41.6%	36.3%	37.2%
ED		12.6%	29.5%	19.0%	11.1%	23.3%	30.9%	25.0%	24.0%
EN	20.4%	22.0%	18.8%	25.0%	26.4%	35.7%	41.0%	44.1%	40.0%
FA	21.2%	26.8%	34.6%	30.1%	24.1%	34.8%	40.6%	37.7%	41.1%
LS	19.1%	19.7%	23.0%	23.4%	27.5%	28.1%	35.9%	37.7%	41.1%
—●— Total	19.8%	20.8%	24.0%	23.7%	25.9%	28.7%	37.0%	37.8%	40.3%

6 Year Graduation Rate, by College

Full-time FTIAC Cohort 2005-2012



	2005	2006	2007	2008	2009	2010	2011	2012
BA	36.4%	30.3%	32.0%	35.0%	27.4%	31.3%	50.6%	49.3%
ED		24.3%	37.5%	32.0%	23.9%	44.2%	47.1%	40.3%
EN	25.9%	34.1%	26.7%	35.6%	34.5%	45.7%	48.1%	51.6%
FA	29.0%	32.6%	42.2%	42.6%	36.0%	47.6%	49.1%	48.1%
LS	24.9%	26.9%	31.5%	33.4%	35.8%	38.0%	45.6%	46.2%
—●— Total	26.2%	28.1%	32.3%	34.3%	34.6%	39.1%	46.6%	47.0%

*See Definitions in next page



Timing Definition: The definition of “a year” is the 12-month period from the beginning of a fall term in one year to the beginning of the following fall term. The fall enrollment status is based on the official reporting date for the IPEDS fall enrollment report.

FTIAC (or First-time Freshman): (See IPEDS definition) “An entering freshman who has never attended any college. Includes students enrolled in the fall term who attended for the first time in the prior summer term. Also includes students who entered with advanced standing (college credits earned before graduation from high school).” Report only full-time, baccalaureate, first-time freshmen in this survey.

Graduation Rates: Graduation rate is the cumulative percentage of first-time, full-time freshmen in a given fall term who graduated within a designated period of time. For example, the “5 Year Graduation Rate” for fall 2012 first-time, full time freshmen is the percentage of fall 2012 first-time full time freshmen who graduated from the university by the fall 2017 term including those students who completed their courses during the summer of 2017.

Reminder: As is the convention with IPEDS, data used for these calculations may be adjusted for students who departed for the following reasons: deceased, permanently disabled, or joined the armed forces (including those called to active duty from the Reserves or National Guard) or foreign aid service of the federal government or official church missions. These are allowable exclusions, and may be subtracted from the cohort prior to calculating the graduation rate.

Example: 4 Year Graduation Rate calculation: $\text{Number in cohort who graduated within 4 years} / (\text{cohort headcount} - \text{the allowable exclusions})$.